

部門總覽

CORPORATE PROFILE

水務署是政府部門，負責向中華人民共和國香港特別行政區 1 100 平方公里內約 694 萬居民提供用水，並向本港約八成居民提供海水作沖廁用途。

本署現有 264 萬名用戶。平均每日食水用量及海水用量分別為 265 萬立方米及 72 萬立方米。約七至八成的原水由廣東省輸入。於二零零五年，從廣東輸入的原水量達 7.71 億立方米。

The Water Supplies Department (WSD) is a government department responsible for providing water services to some 6.94 million people living within the 1 100 square kilometers of Hong Kong Special Administrative Region (SAR) of the People's Republic of China. It also supplies sea water for flushing to about 80 per cent of the population.

There are 2.64 million customer accounts. Average daily fresh water (FW) consumption is 2.65 million cubic metres and sea water (SW) consumption is 0.72 million cubic metres. About 70-80 per cent of raw water is imported from Guangdong Province. In 2005, the quantity of raw water imported from Guangdong was 771 million cubic metres.

主要統計數字 (於二零零六年三月三十一日)
Principal Statistics (As at 31.3.2006)

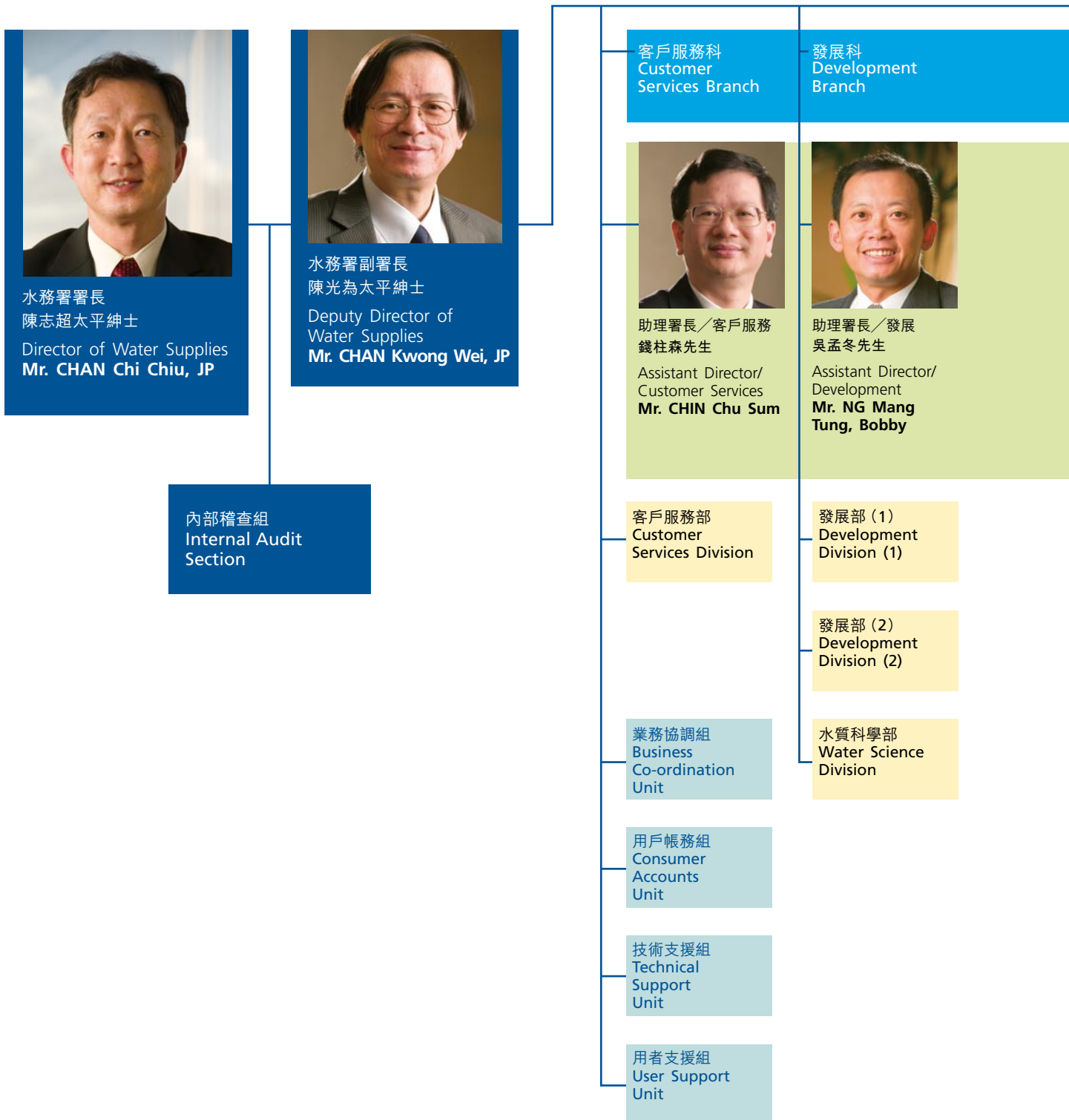
水塘數目 No. of Impounding Reservoirs	17	個 nos.
總容量 Total Storage Capacity	586	百萬立方米 million cubic metres
濾水廠數目 No. of Water Treatment Works	21	間 nos.
總日產量 Total Daily Treatment Capacity	4.8	百萬立方米 million cubic metres
食水抽水站數目 No. of FW Pumping Stations	150	座 (包括食水和原水抽水站及泵房) NOS. (incl both fresh & raw water PS & PH)
總抽水日產量 Total Daily Pumping Capacity	31.27	百萬立方米 million cubic metres
海水抽水站數目 No. of SW Pumping Stations	29	座 (包括抽水站及泵房) NOS. (incl both PS & PH)
總抽水日產量 Total Daily Pumping Capacity	1.73	百萬立方米 million cubic metres
食水及海水抽水站數目 No. of Combined FW & SW Pumping Stations	7	座 nos.
總抽水日產量 Total Daily Pumping Capacity	0.26	百萬立方米 million cubic metres
食水配水庫數目 No. of FW Service Reservoirs	160	個 nos.
總容量 Total Storage Capacity	4.08	百萬立方米 million cubic metres
海水配水庫數目 No. of SW Service Reservoirs	45	個 nos.
總容量 Total Storage Capacity	0.3	百萬立方米 million cubic metres
食水管長度 Length of Fresh Water Mains	6078*	公里 (直徑 20 毫米至 2 400 毫米) km (20mm to 2 400mm diameter)
海水管長度 Length of Salt Water Mains	1553*	公里 (直徑 20 毫米至 1 200 毫米) km (20mm to 1 200mm diameter)






* 數字包括私人街道內的水管長度

* Water mains laid in private streets are included



水務署組織圖 WSD Organization Chart



	財務及資訊科技科 Finance and Information Technology Branch	機械及電機科 Mechanical and Electrical Branch	設計及建設科 New Works Branch	運作科 Operations Branch	部門行政部 Departmental Administration Division
	 助理署長／財務及資訊科技 楊淑貞女士 Assistant Director/ Finance & Information Technology Ms. YEUNG Shuk Ching, Agnes	 助理署長／機械及電機 鄒志偉太平紳士 Assistant Director/ Mechanical & Electrical Mr. CHAU Chi Wai, David, JP	 助理署長／設計及建設 梁孟釗太平紳士 Assistant Director/ New Works Mr. LEUNG Mang Chiu, JP	 助理署長／運作 張秉能先生 Assistant Director/ Operations Mr. CHEUNG Ping Nang	 部門秘書 黃惠芬女士 Departmental Secretary Ms. WONG Wai Fun, Stella
	<ul style="list-style-type: none"> 財務部 Finance Section 物料供應組 Supplies Section 數據管理組 Data Management Unit 資訊科技管理組 Information Technology Management Unit 	<ul style="list-style-type: none"> 保養部 Maintenance Division 工程計劃部 Projects Division 機電行政組 M & E Administration Unit 安全組 Safety Unit 訓練組 Training Unit 	<ul style="list-style-type: none"> 建設部 Construction Division 顧問工程管理部 Consultants Management Division 設計部 Design Division 工程管理部 Project Management Division 工程策劃組 Project Planning Unit 	<ul style="list-style-type: none"> 香港及離島區 Hong Kong and Islands Region 九龍區 Kowloon Region 新界東區 New Territories East Region 新界西區 New Territories West Region 運作組 Operations Unit 斜坡安全組 Slope Safety Unit 	<ul style="list-style-type: none"> 一般行政組 General Administration Section 合約顧問組 Contract Advisory Unit 公共關係組 Public Relations Unit