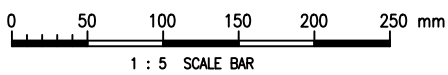


Cad Ref. : WSD075601-A.dwg



A	KEYHOLE PLASTIC PLUG ADDED	C.Y. CHAN	4/5/23
REF.	REVISION	APPROVED	DATE

FABRICATED STEEL RECESSED COVER AND FRAME TO 300 SQUARE SURFACE BOX OPENING AT BITUMINOUS CYCLE TRACK



水務署  
Water Supplies Department

APPROVED

W.L. LEUNG  
AD/NW

DRAWING NO.

CSWP

DATE

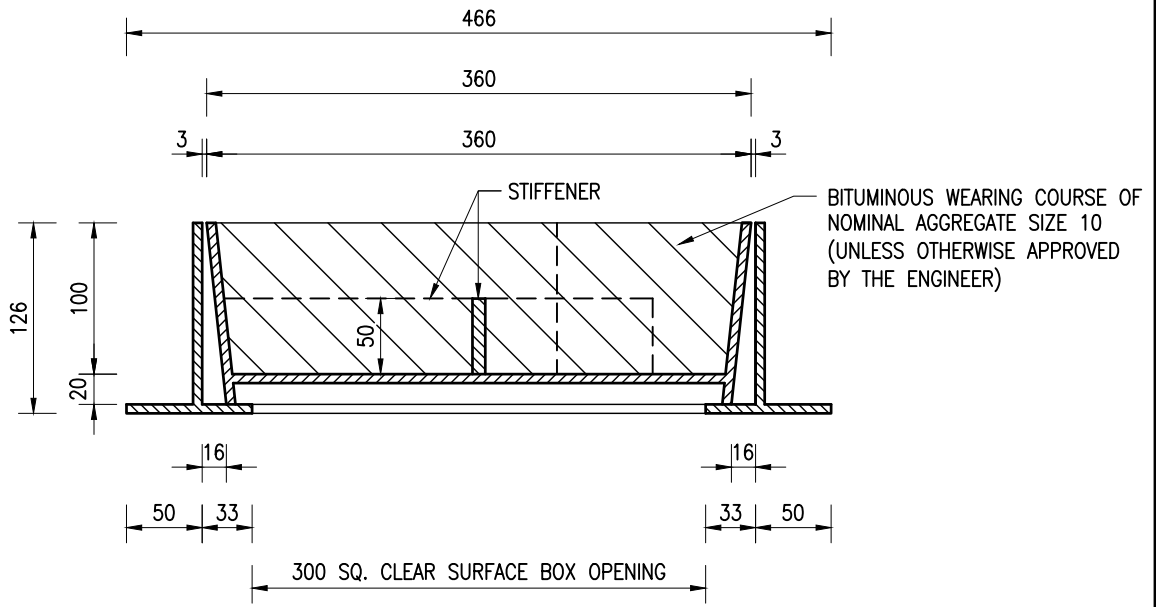
29/10/13

WSD 7.56A

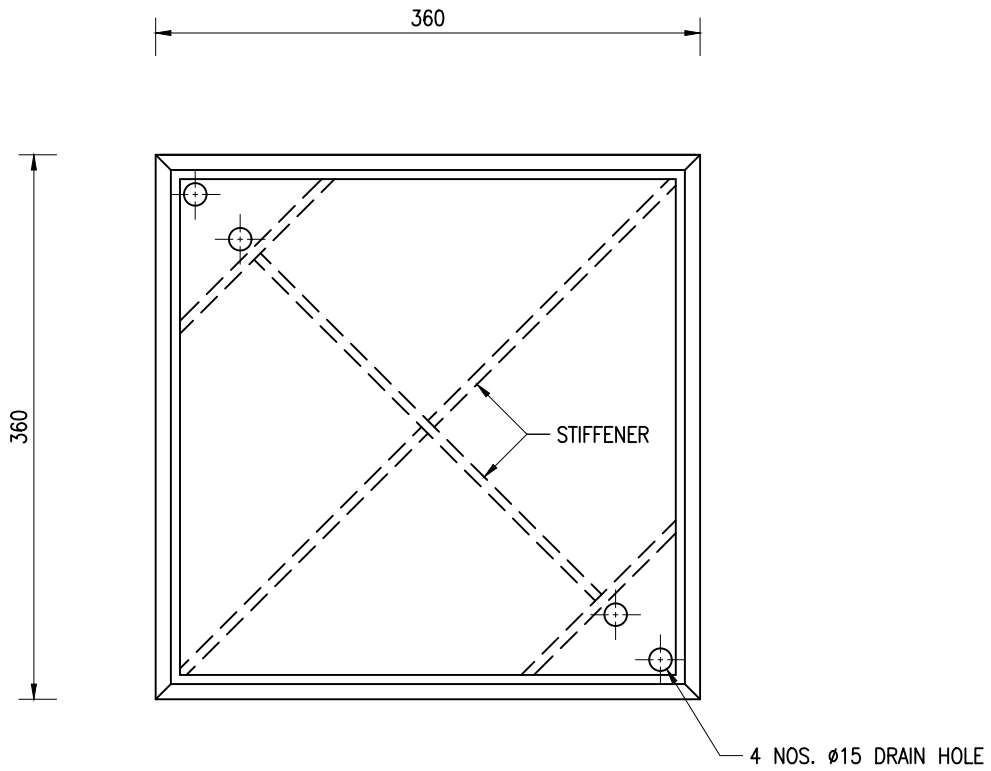
SCALE

1 : 5

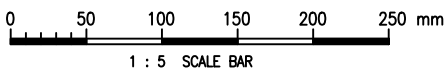
(SHEET 1 OF 3)



SECTION A - A



BOTTOM VIEW OF COVER



Cad Ref. : WSD075602--A.dwg

FABRICATED STEEL RECESSED COVER  
AND FRAME TO 300 SQUARE  
SURFACE BOX OPENING AT  
BITUMINOUS CYCLE TRACK



水務署  
Water Supplies Department

APPROVED

W.L. LEUNG  
AD/NW

DATE

29/10/13

SCALE

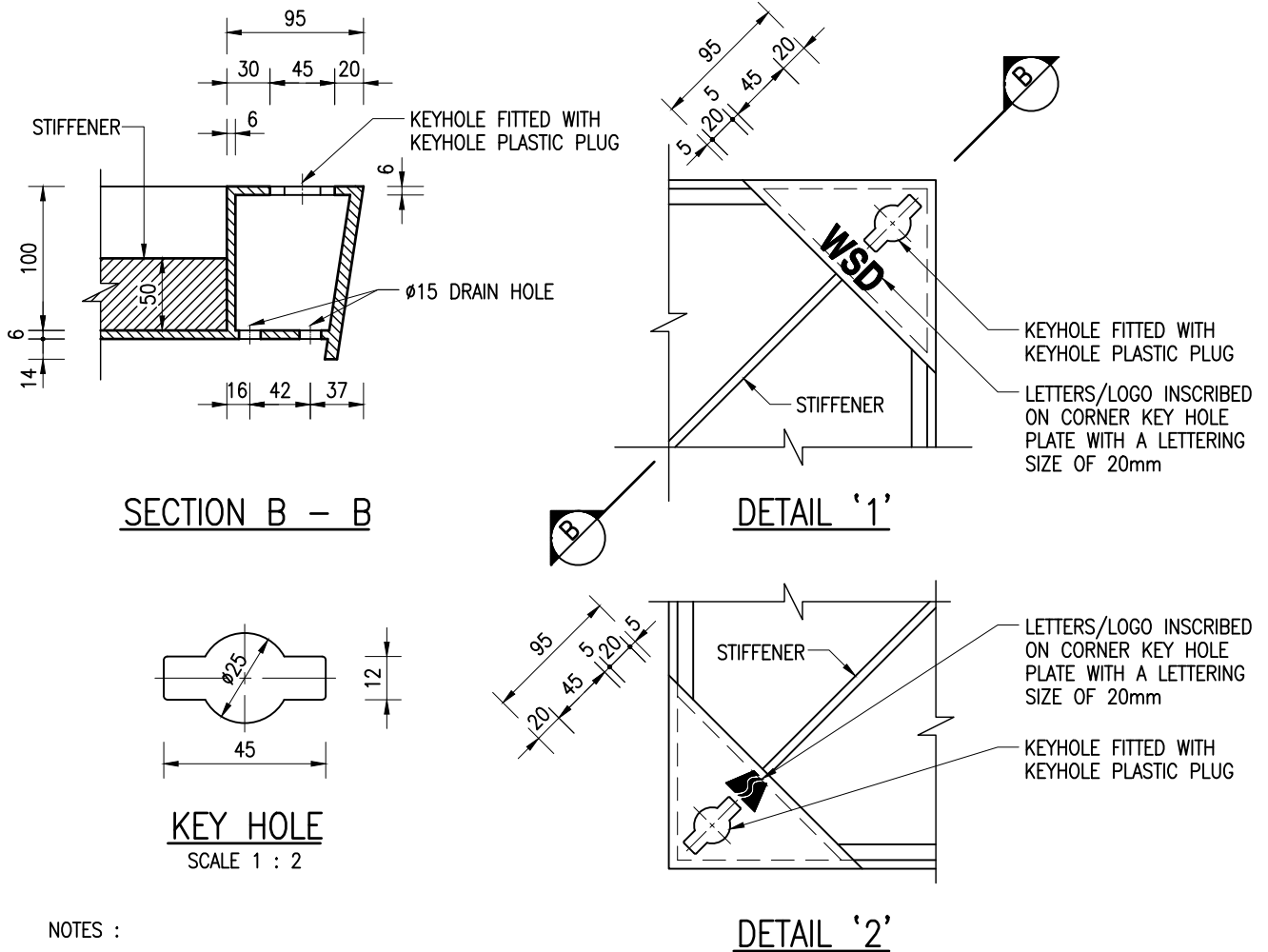
1 : 5

DRAWING NO.

WSD 7.56A

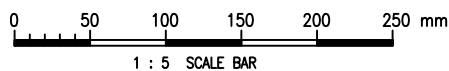
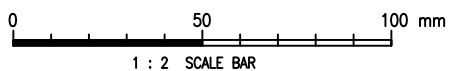
(SHEET 2 OF 3)

CSWP



NOTES :

1. ALL DIMENSIONS ARE IN MILLIMETRES.
2. FOR DETAILS OF WATER SUPPLIES DEPARTMENT LOGO REFER TO DRG. NO. WSD 7.17.
3. COVER AND FRAME SHALL BE MANUFACTURED IN ACCORDANCE WITH BS EN 124 AND SHALL BE FULLY FABRICATED FROM 6mm THICK STEEL COMPLYING WITH GRADE 43 OF BS 4360.
4. COVER SHALL BE TESTED TO CLASS D400 IN ACCORDANCE WITH BS EN 124.
5. IN ADDITION TO THE MARKINGS SPECIFIED, THE MANUFACTURER'S NAME AND THE CONTRACT NUMBER SHALL BE INSCRIBED ON THE UNDERSIDE OF THE COVER WITH A MINIMUM LETTERING SIZE OF 20mm.
6. COVER AND FRAME SHALL BE GALVANIZED TO BS EN ISO 1461 WITH A GALVANIZED COATING 85  $\mu$ m THICK MINIMUM.
7. SHARP EDGES SHALL BE REMOVED.
8. EDGES SHALL BE MACHINE FINISHED TO FORM A SMOOTH SURFACE.
9. THE APPROXIMATE WEIGHT OF THE COVER WITH BITUMINOUS INFILLING SHALL BE 30kg.
10. FOR AREA ONLY USED BY PEDESTRIANS AND PEDAL CYCLISTS.
11. THE EXTERNAL EDGES OF THE COVER AND INTERNAL FACES OF THE FRAME SHALL BE COATED WITH A NON-SETTING, THICK LUBRICANT (SUCH AS PETROLEUM GELLY) IN ORDER TO PREVENT JAMMING THE COVER AND FRAME DUE TO SAND GRAINS ENTERING INTO THE GAP AFTER FINAL FIXING.
12. THE SURFACE COLOUR OF THE BITUMINOUS INFILL SHALL MATCH THE COLOUR DRESSING OF THE CYCLE TRACK.
13. FOR DETAILS OF KEYHOLE PLASTIC PLUG REFER TO DRAWING NO. WSD 7.48.



Cad Ref. : WSD075603-A.dwg

FABRICATED STEEL RECESSED COVER AND FRAME TO 300 SQUARE SURFACE BOX OPENING AT BITUMINOUS CYCLE TRACK



水務署  
Water Supplies Department

APPROVED

W.L. LEUNG  
AD/NW

DRAWING NO.

CSWP

DATE

29/10/13

WSD 7.56A

SCALE

1 : 5 OR AS SHOWN

(SHEET 3 OF 3)