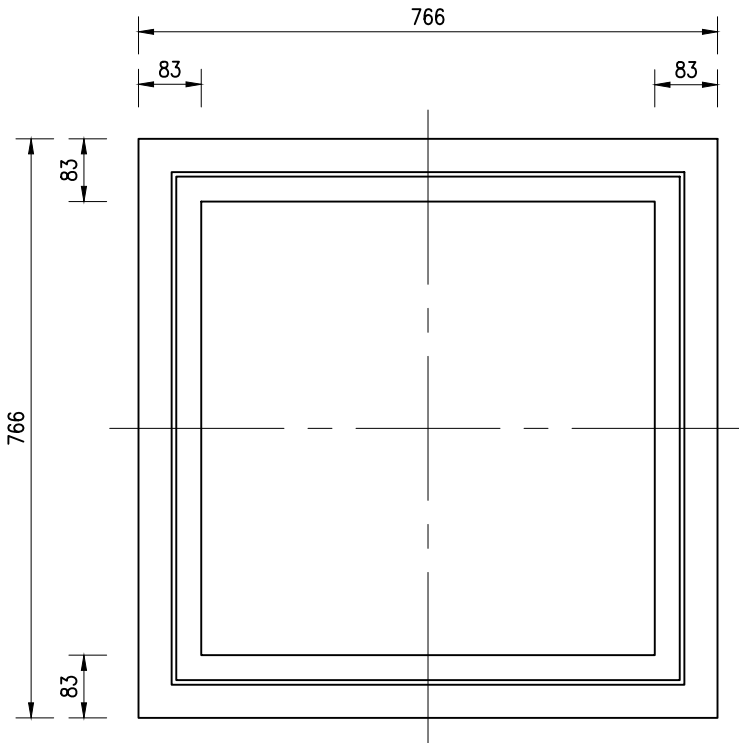
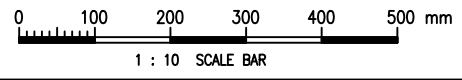


100 DP. RECESS IN COVER FOR INFILLING OF PAVING UNITS (PATTERN SHOWN IS INDICATIVE ONLY, IT SHALL BE THE SAME AS THE SURROUNDING PATTERN)

COVER



FRAME



Cad Ref. : WSD075001-D.dwg

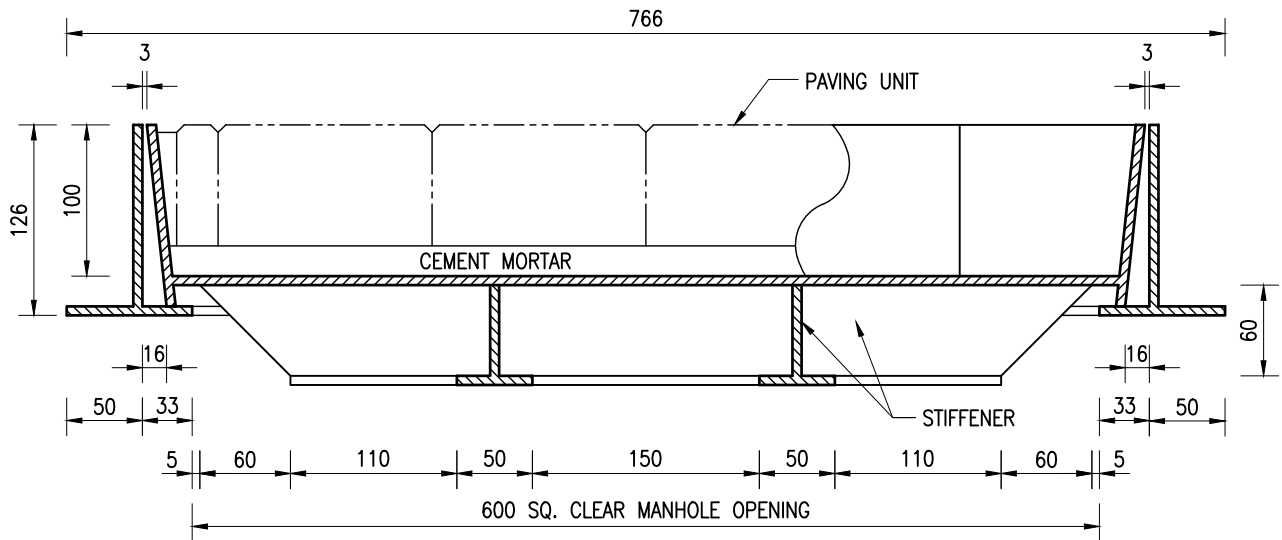
D	KEYHOLE PLASTIC PLUG ADDED	C.Y. CHAN	4/5/23
C	FRAME, COVER AND KEY HOLE REVISED	W.K. CHIU	3/11/05
B	RE-FORMATTED TO CSWP	W.K. CHIU	14/11/03
A	GENERAL REVISION	W.K. CHIU	10/10/00
REF.	REVISION	APPROVED	DATE

FABRICATED STEEL RECESSED COVER AND FRAME TO 600 SQUARE MANHOLE OPENING



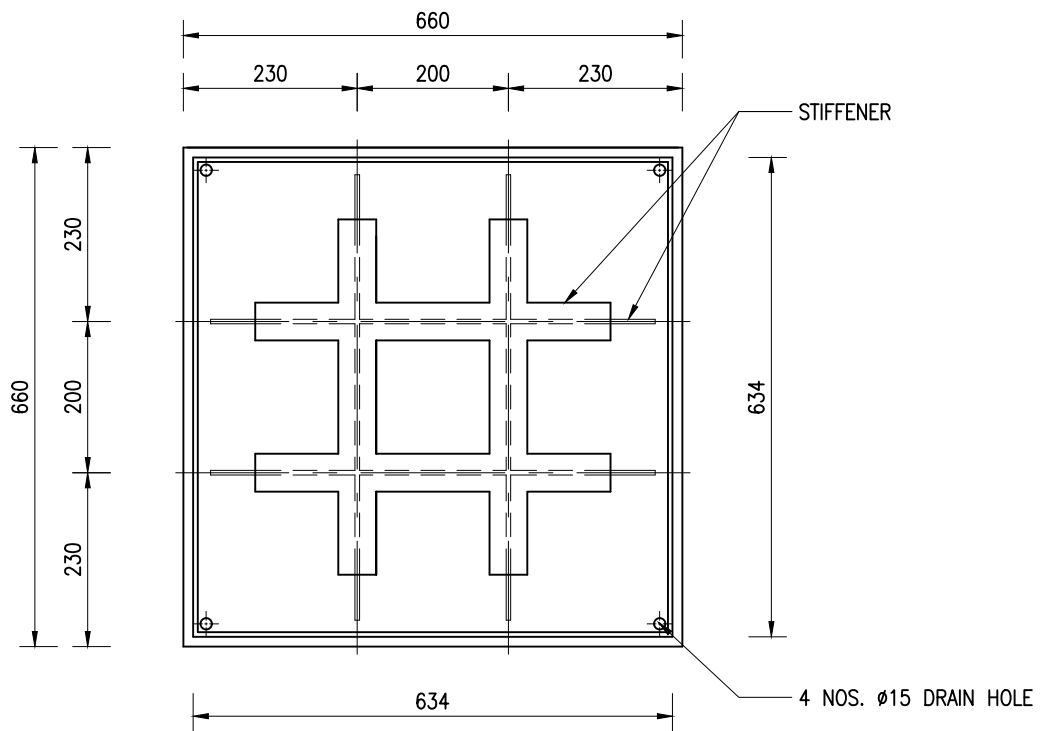
水務署  
Water Supplies Department

APPROVED	M.C. LEUNG AD/NW	DRAWING NO. WSD 7.50D (SHEET 1 OF 3)	CSWP
DATE	22/5/00		
SCALE	1 : 10		



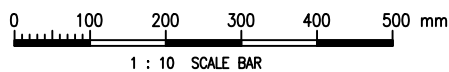
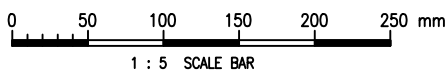
**TYPICAL SECTION OF COVER AND FRAME**

SCALE 1 : 5



**BOTTOM VIEW OF COVER**

SCALE 1 : 10



Cad Ref. : WSD075002-D.dwg

FABRICATED STEEL RECESSED COVER  
AND FRAME TO 600 SQUARE  
MANHOLE OPENING



水務署  
Water Supplies Department

APPROVED

M.C. LEUNG  
AD/NW

DATE

22/5/00

SCALE

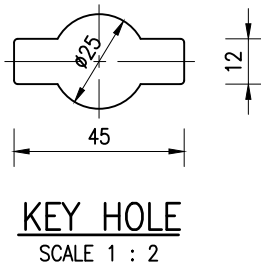
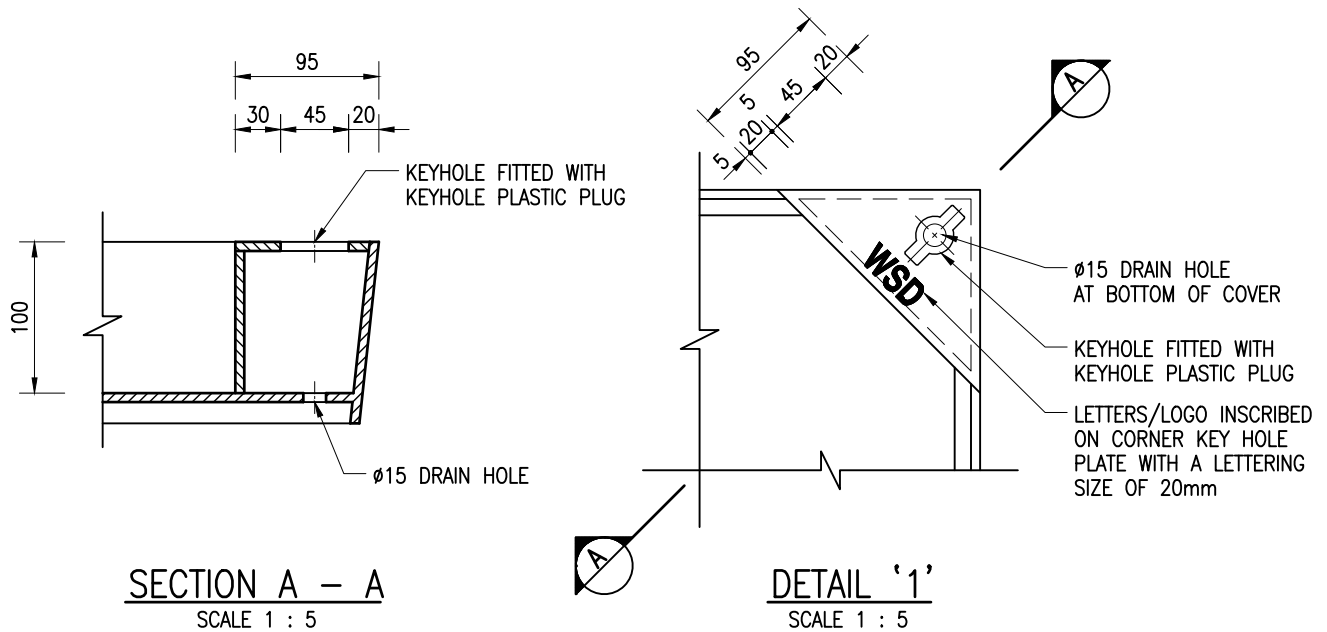
1 : 5 OR AS SHOWN

DRAWING NO.

WSD 7.50D

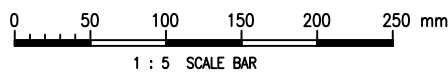
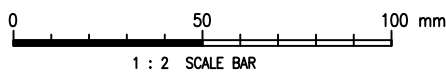
(SHEET 2 OF 3)

CSWP



NOTES :

1. ALL DIMENSIONS ARE IN MILLIMETRES.
2. FOR DETAILS OF WATER SUPPLIES DEPARTMENT LOGO REFER TO DRG. NO. WSD 7.17 (SHEET 1 OF 3).
3. COVER AND FRAME SHALL BE MANUFACTURED TO ENSURE A CLOSE MATCHING FIT AND SHALL BE FULLY FABRICATED FROM 6mm THICK STEEL COMPLYING WITH GRADE 43 OF BS 4360.
4. IN ADDITION TO THE MARKINGS SPECIFIED, THE MANUFACTURER'S NAME AND THE CONTRACT NUMBER SHALL BE INSCRIBED ON THE UNDERSIDE OF THE COVER WITH A MINIMUM LETTERING SIZE OF 20mm.
5. COVER AND FRAME SHALL BE GALVANIZED TO BS EN ISO 1461 WITH A GALVANIZED COATING 85  $\mu$ m THICK MINIMUM.
6. COVER SHALL BE DESIGNED TO WITHSTAND A 11 TONNES SLOW MOVING WHEEL LOAD.
7. SHARP EDGES SHALL BE REMOVED.
8. EDGES SHALL BE MACHINE FINISHED TO FORM A SMOOTH SURFACE.
9. THE APPROXIMATE WEIGHT OF THE COVER WITH INFILLING PAVING UNITS SHALL BE 125kg.
10. FOR DETAILS OF KEYHOLE PLASTIC PLUG REFER TO DRAWING NO. WSD 7.48.



Cad Ref. : WSD075003-D.dwg

FABRICATED STEEL RECESSED COVER AND FRAME TO 600 SQUARE MANHOLE OPENING



水務署  
Water Supplies Department

APPROVED	M.C. LEUNG AD/NW	DRAWING NO. WSD 7.50D (SHEET 3 OF 3)	CSWP
DATE	22/5/00		
SCALE	1 : 5 OR AS SHOWN		