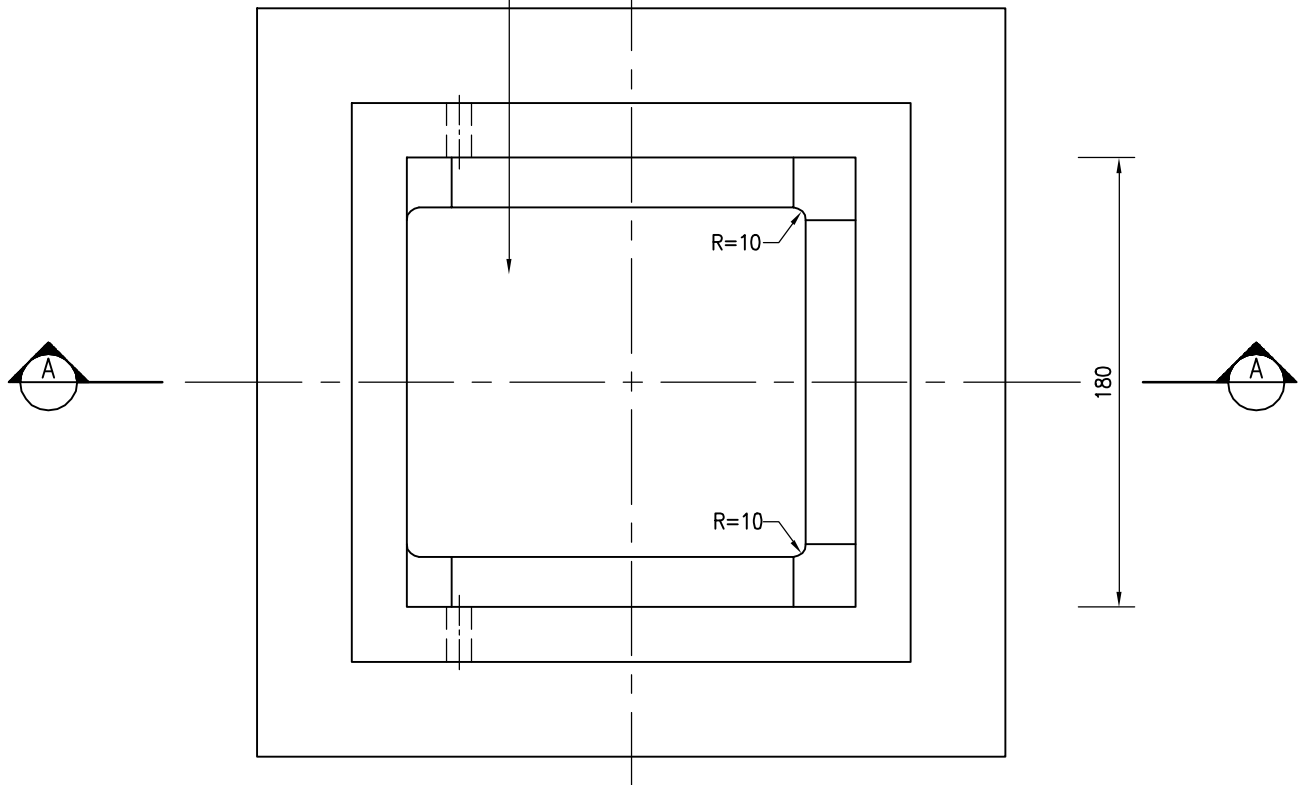


SECTION A - A

THE SHAPE OF THE OPENING IS FOR REFERENCE ONLY AND A MIN. OPENING AREA OF 0.022m² SHALL BE PROVIDED



D.I. FRAME

Cad Ref. : WSD074501-B.dwg

B	RE-FORMATTED TO CSWP	W.K. CHIU	14/11/03
A	GENERAL REVISION	W.K. CHIU	20/9/00
REF.	REVISION	APPROVED	DATE

180 SQUARE DUCTILE IRON
SURFACE BOX



水務署
Water Supplies Department

APPROVED

M.C. LEUNG
AD/NW

DATE

27/8/99

SCALE

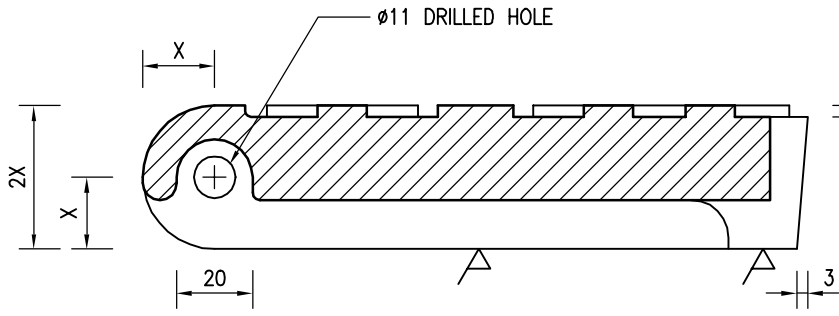
N.T.S.

DRAWING NO.

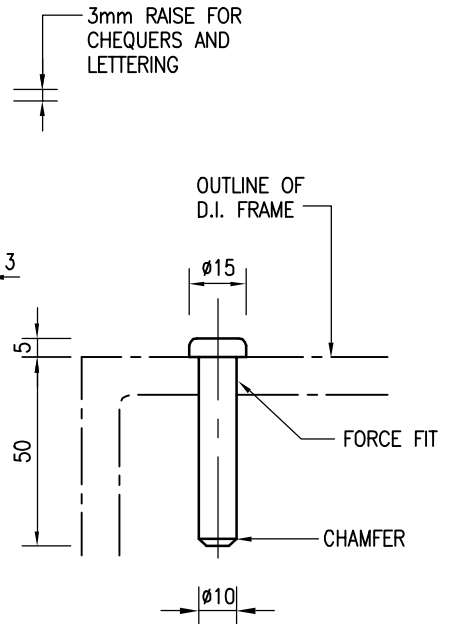
WSD 7.45B

(SHEET 1 OF 2)

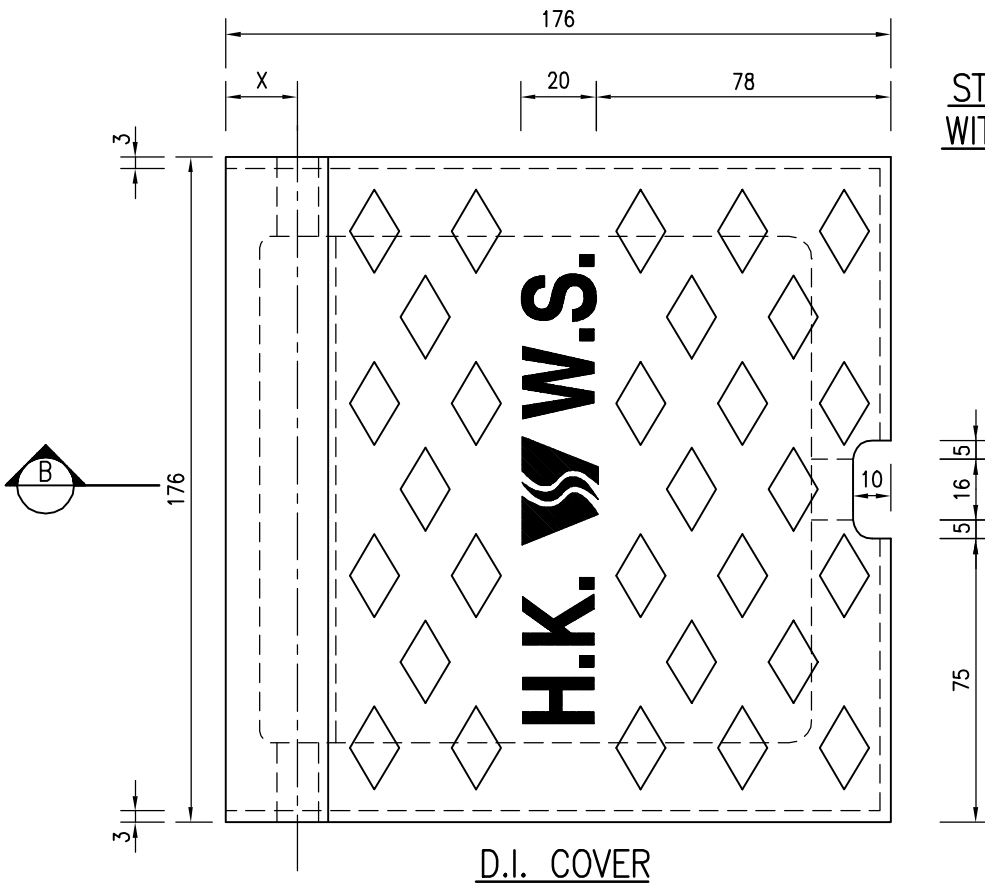
CSWP



SECTION B - B



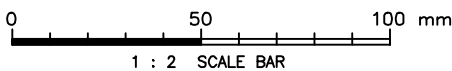
STAINLESS STEEL PIN
WITH CHAMFERED END
(2 NOS. REQUIRED)



D.I. COVER

NOTES :

1. ALL DIMENSIONS ARE IN MILLIMETRES.
2. THIS DRAWING SHALL BE READ IN CONJUNCTION WITH DRG. NO. WSD 7.43.
3. FOR DETAILS OF WATER SUPPLIES DEPARTMENT LOGO REFER TO DRG. NO. WSD 7.17 (SHEET 1 OF 3).



1 : 2 SCALE BAR

Cad Ref. : WSCD074502-B.dwg

180 SQUARE DUCTILE IRON
SURFACE BOX



水務署
Water Supplies Department

APPROVED

M.C. LEUNG
AD/NW

DATE

27/8/99

SCALE

1 : 2

DRAWING NO.

WSD 7.45B

(SHEET 2 OF 2)

CSWP