

STANDARD WSD LOGO

NOTES :

1. MATERIAL AND HEIGHT OF THE LETTERING AND LOGO SHALL BE AS SPECIFIED IN THE CONTRACT.
2. STANDARD COLOURING OF THE LOGO SHALL BE 'ULTRA MARINE BLUE' AGAINST A GENERAL BACKGROUND IN WHITE.
3. THE COLOUR 'ULTRA MARINE BLUE' SHALL BE PANTONE COLOUR 293C (APPROXIMATE TO CODE 20 E 53 OF BS 5252F).

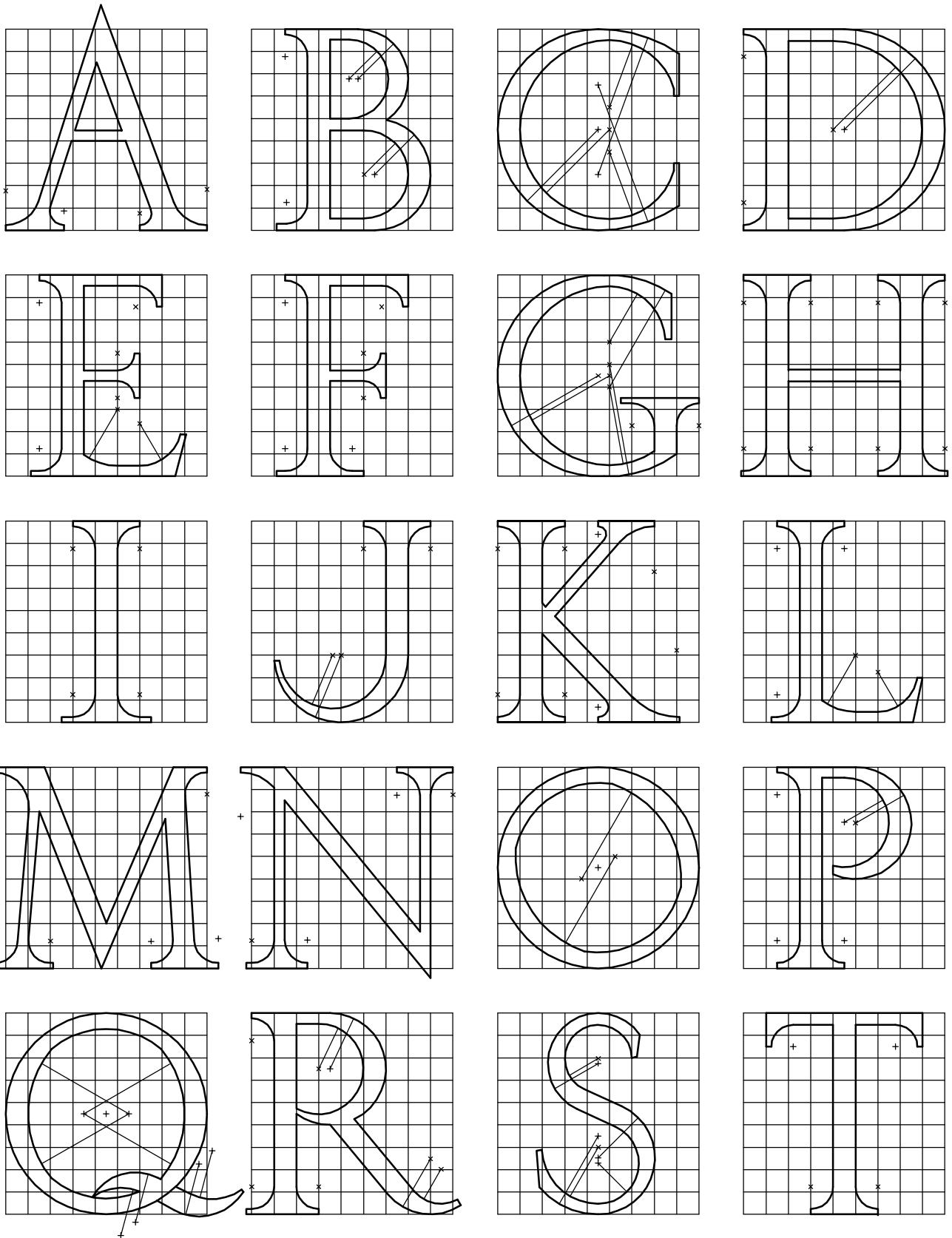
B	RE-FORMATTED TO CSWP	W.K. CHIU	14/11/03
A	GENERAL REVISION	W.K. CHIU	21/8/00
REF.	REVISION	APPROVED	DATE

STANDARD LETTERING AND LOGO



水務署
Water Supplies Department

APPROVED	G.C. LEE AD/NW	DRAWING NO. WSD 7.17B (SHEET 1 OF 3)	CSWP
DATE	9/6/92		
SCALE	NOT APPLICABLE		



STANDARD LETTERING FOR WATERWORKS INSTALLATIONS

STANDARD LETTERING AND LOGO



水務署
Water Supplies Department

APPROVED

G.C. LEE
AD/NW

DATE

9/6/92

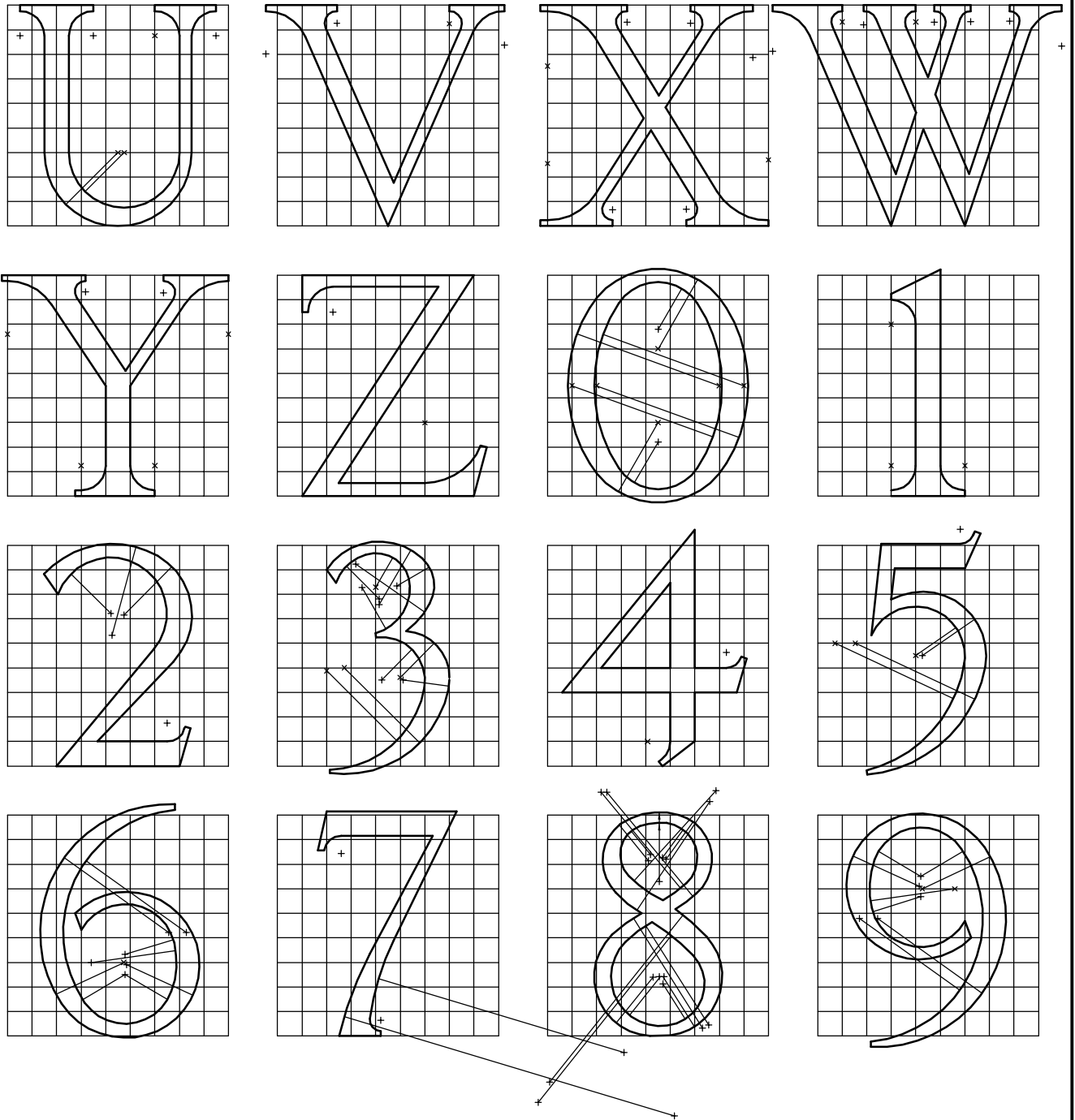
SCALE

NOT APPLICABLE

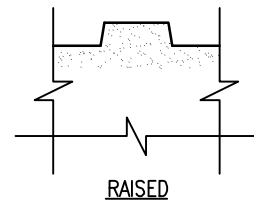
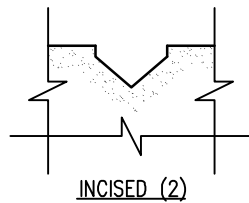
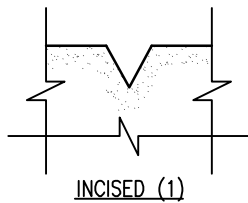
DRAWING NO.

WSD 7.17B
(SHEET 2 OF 3)

CSWP



STANDARD LETTERING FOR WATERWORKS INSTALLATIONS



SECTIONS THROUGH LETTERS

Cad Ref. : WSD071703-B.dwg

STANDARD LETTERING AND LOGO



水務署
Water Supplies Department

APPROVED

G.C. LEE
AD/NW

DATE

9/6/92

SCALE

NOT APPLICABLE

DRAWING NO.

WSD 7.17B
(SHEET 3 OF 3)

CSWP