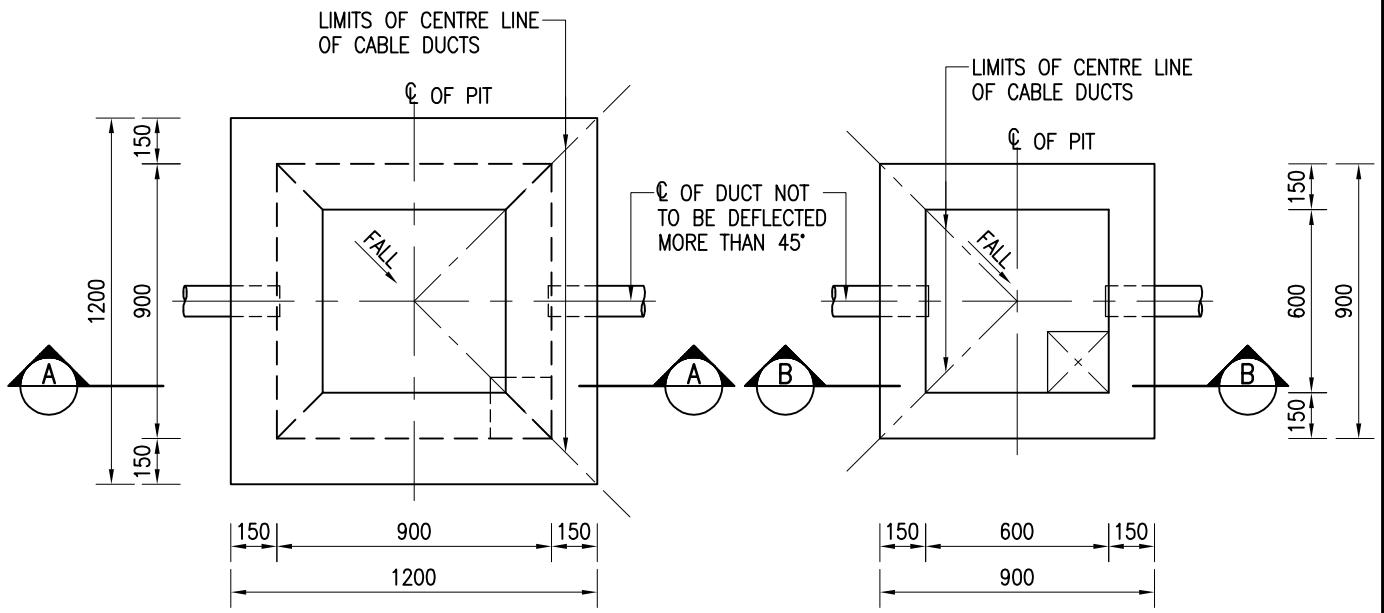


UPVC OR G.I. CABLE DUCT DIAMETER TO BE AS SPECIFIED ON THE CONTRACT DRAWING

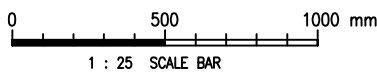
**SECTION A - A**

**SECTION B - B**



**PLAN**  
**TYPE I : 900 x 900**  
(COVERS NOT SHOWN FOR CLARITY)

**PLAN**  
**TYPE II : 600 x 600**  
(COVERS NOT SHOWN FOR CLARITY)



D	DETAILS OF DUCT SEALING ADDED	M.K. HA	26/11/08
C	RE-FORMATTED TO CSWP	W.K. CHIU	14/11/03
B	GENERAL REVISION	W.K. CHIU	20/9/00
A	DETAILS OF IDENTIFICATION TAPES TRANSFERRED TO DRG. NO. WSD 7.41	K.W. CHAN	31/10/96
REF.	REVISION	APPROVED	DATE

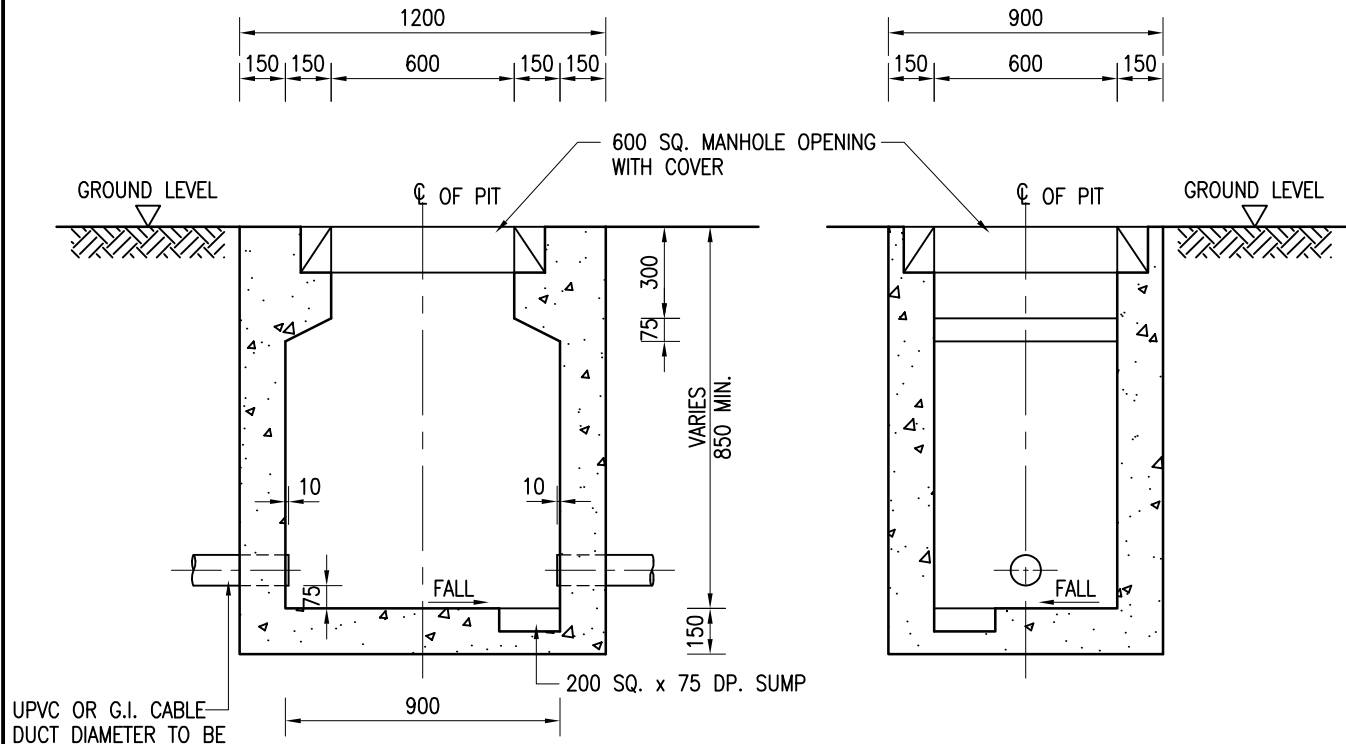
Cad Ref. : WSD071601-D.dwg

CABLE DRAWPITS

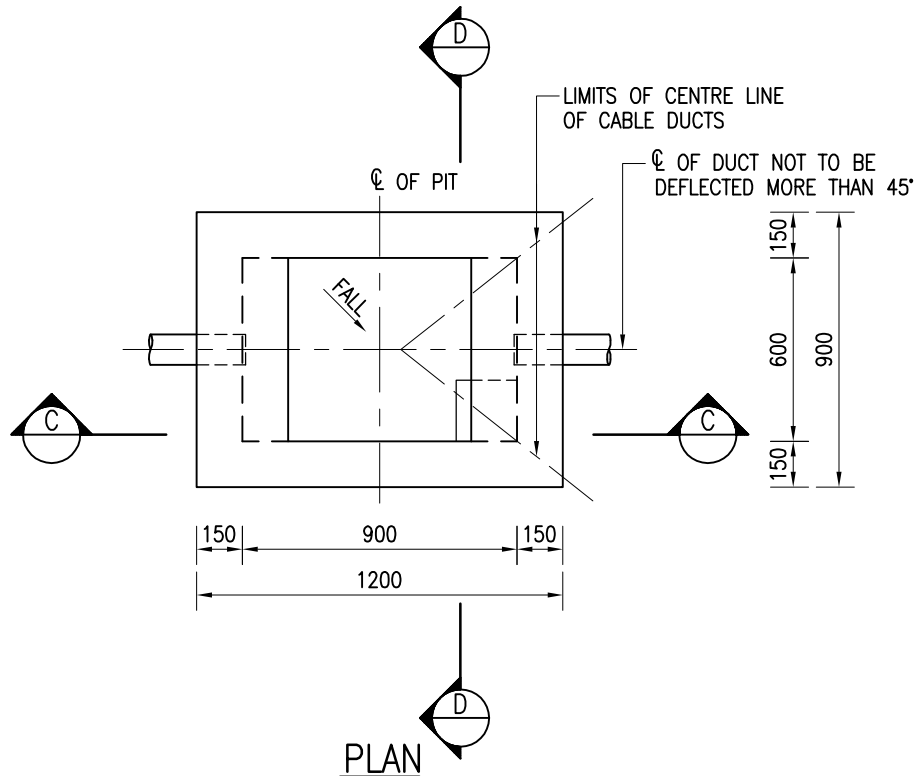


**水務署**  
**Water Supplies Department**

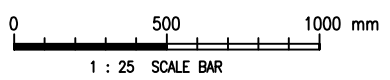
APPROVED	G.C. LEE AD/NW	DRAWING NO.	CSWP
DATE	9/6/92	WSD 7.16D	
SCALE	1 : 25	(SHEET 1 OF 3)	



UPVC OR G.I. CABLE DUCT DIAMETER TO BE AS SPECIFIED ON THE CONTRACT DRAWING



**TYPE III : 900 x 600**  
(COVERS NOT SHOWN FOR CLARITY)



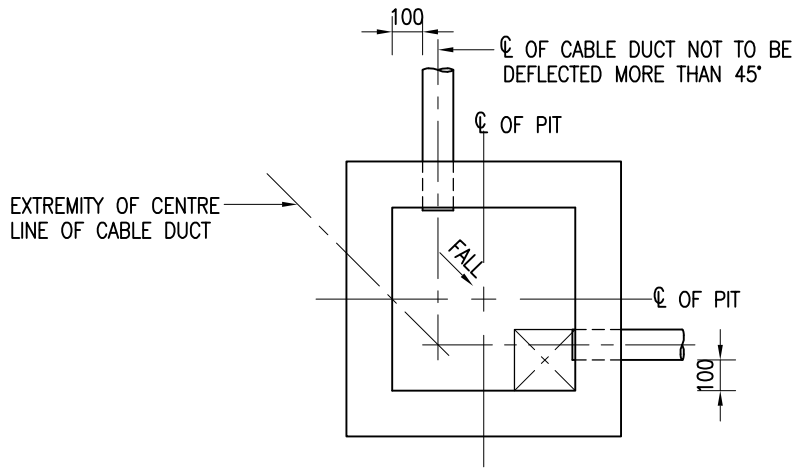
Cad Ref. :WSD071602-D.dwg



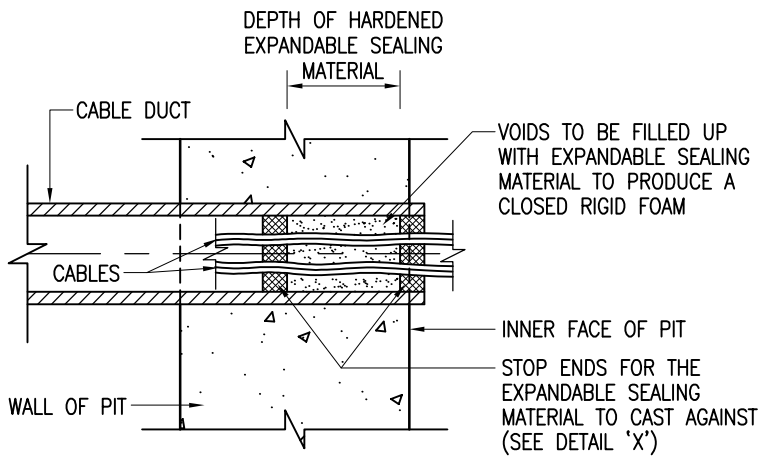
**水務署**  
**Water Supplies Department**

CABLE DRAWPITS

APPROVED	G.C. LEE AD/NW	DRAWING NO. <b>WSD 7.16D</b> (SHEET 2 OF 3)	CSWP
DATE	9/6/92		
SCALE	1 : 25		

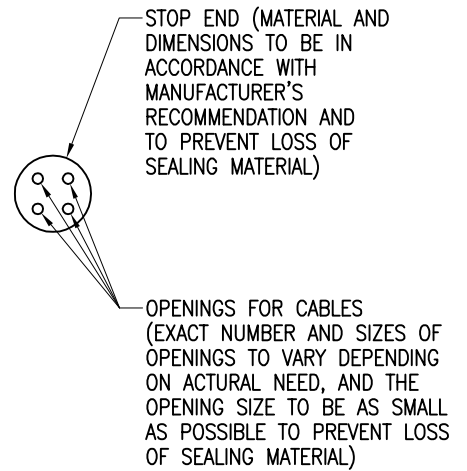


PLAN FOR ALL PITS WITH  
A ROUTE CHANGE BETWEEN 45° AND 90°



DETAILS OF DUCT SEALING

N.T.S.

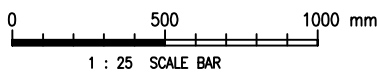


DETAIL 'X'

N.T.S.

NOTES :

1. ALL DIMENSIONS ARE IN MILLIMETRES UNLESS OTHERWISE SPECIFIED.
2. CONCRETE TO PIT SHALL BE GRADE 30/20D.
3. INLET AND OUTLET LEVELS OF DUCTS SHALL BE THE SAME UNLESS SHOWN OTHERWISE.
4. ALL CABLE DUCTS SHALL BE SEALED AS SHOWN IN THE DETAILS OF DUCT SEALING.
5. THE DUCT SEALING MATERIAL SHALL BE INERT TO THE MATERIALS OF DUCT AND CABLE, BOTH BEFORE AND AFTER HARDENED. THE SEALING MATERIAL SHALL BE ALH RESIN PACK NO. 7A OR OTHER EQUIVALENT MATERIALS APPROVED BY THE ENGINEER. DETAILS OF THE MATERIALS TO BE USED SHALL BE SUBMITTED FOR PRIOR APPROVAL OF THE ENGINEER.
6. THE APPLICATION OF DUCT SEALING MATERIAL SHALL BE IN ACCORDANCE WITH THE MANUFACTURER'S RECOMMENDATION.



Cad Ref. : WSD071603-D.dwg

CABLE DRAWPITS



**水務署**  
**Water Supplies Department**

APPROVED	G.C. LEE AD/NW	DRAWING NO. WSD 7.16D (SHEET 3 OF 3)	CSWP
	DATE 9/6/92		
	SCALE 1 : 25 OR AS SHOWN		