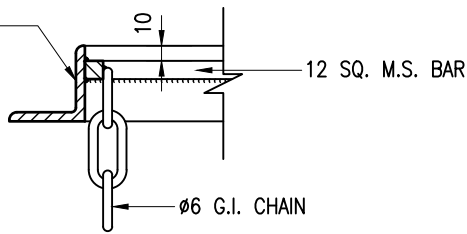
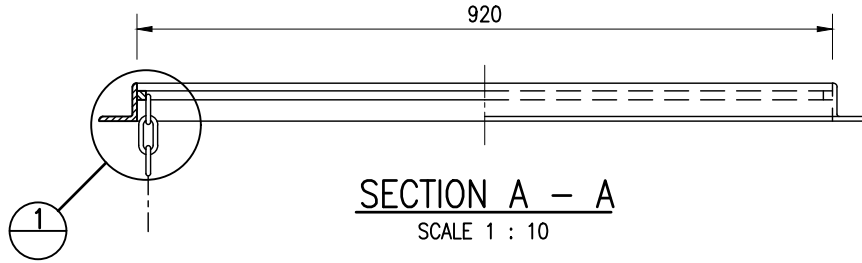


50 x 50 x 6 THK.
M.S. ANGLE FRAME



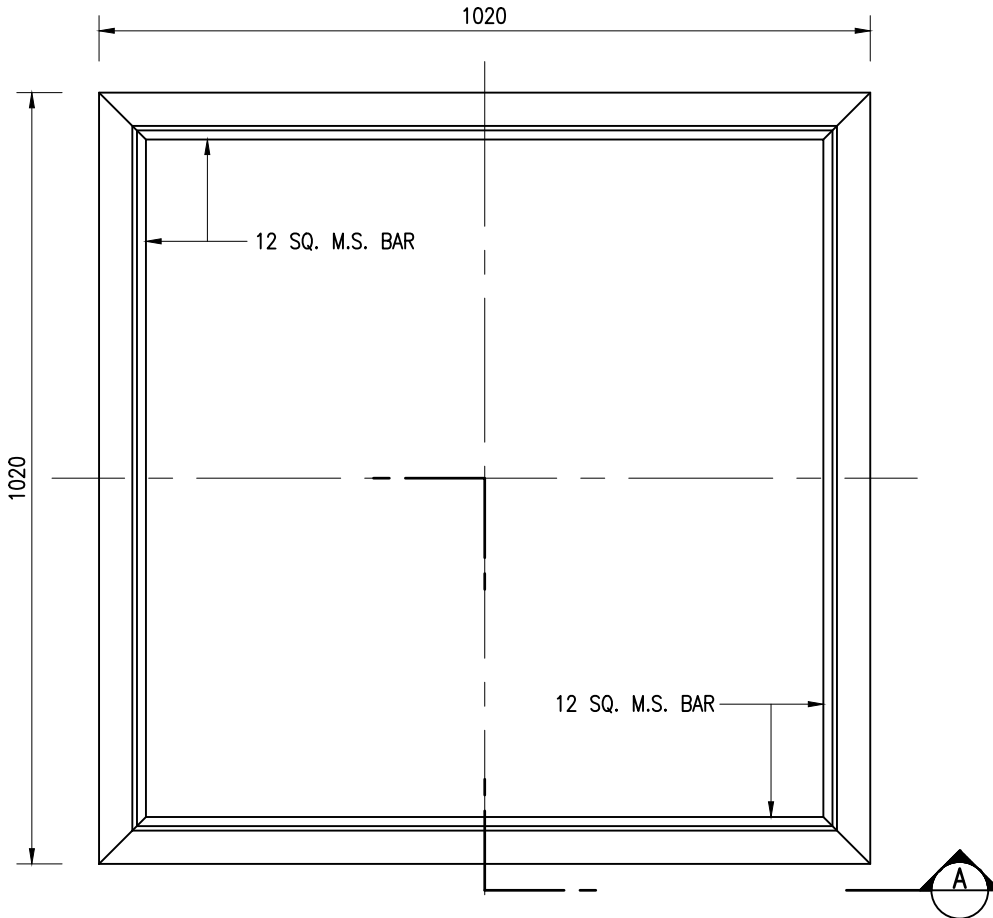
DETAIL '1'

SCALE 1 : 5



SECTION A - A

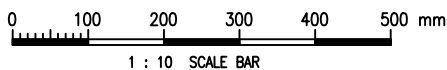
SCALE 1 : 10



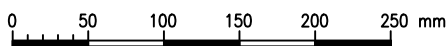
PLAN

SCALE 1 : 10

M.S. ANGLE FRAME



1 : 10 SCALE BAR



1 : 5 SCALE BAR

Cad Ref. : WSD071501-E.dwg

D	ANTI-SKID SURFACE DRESSING ADDED	S.K. YEUNG	28/1/15
C	WSD MARKING ADDED AND KEY HOLE REVISED	W.K. CHIU	12/12/05
B	RE-FORMATTED TO CSWP	W.K. CHIU	14/11/03
A	GENERAL REVISION	W.K. CHIU	10/10/00

E	KEYHOLE PLASTIC PLUG ADDED	C.Y. CHAN	4/5/23
---	----------------------------	-----------	--------

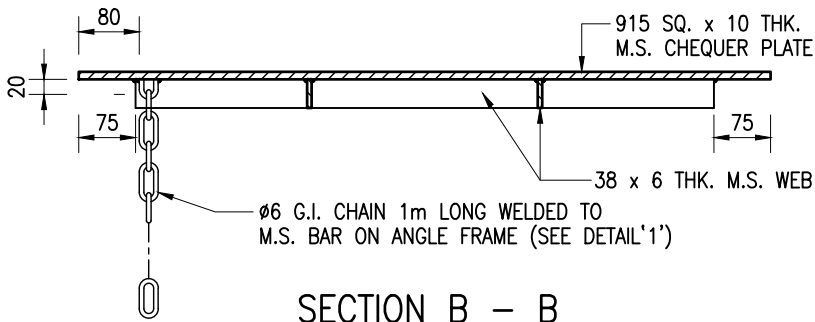
REF.	REVISION	APPROVED	DATE
------	----------	----------	------

MILD STEEL COVER AND FRAME TO
915 SQUARE MANHOLE OPENING



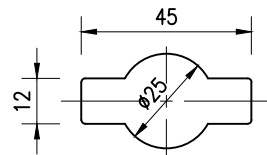
水務署
Water Supplies Department

APPROVED	G.C. LEE AD/NW	DRAWING NO.	CSWP
DATE	9/6/92	WSD 7.15E	
SCALE	1 : 10 OR AS SHOWN	(SHEET 1 OF 2)	



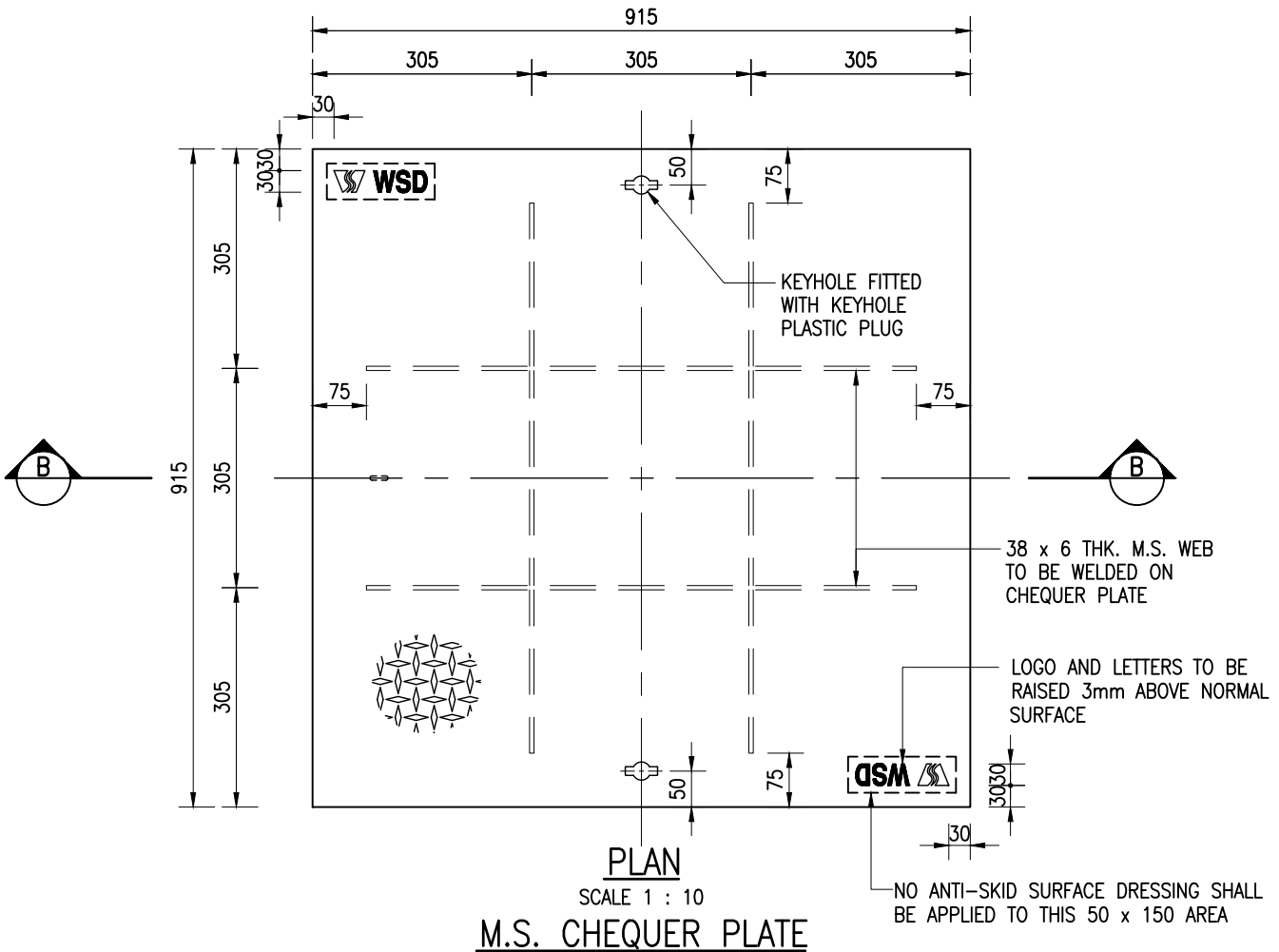
SECTION B - B

SCALE 1 : 10



KEY HOLE

SCALE 1 : 2



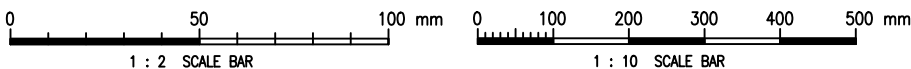
PLAN

SCALE 1 : 10

M.S. CHEQUER PLATE

NOTES :

1. ALL DIMENSIONS ARE IN MILLIMETRES.
2. FOR DETAILS OF WATER SUPPLIES DEPARTMENT LOGO REFER TO DRG. NO. WSD 7.17 (SHEET 1 OF 3).
3. THE TOP OF THE CHEQUER PLATE SHALL BE TREATED WITH ANTI-SKID DRESSING SUCH AS A GRADED CALCINED BAUXITE AGGREGATE BEDDED IN AN EPOXY RESIN BASED BINDER OR OTHER TREATMENT AS APPROVED BY THE ENGINEER. THE SKID RESISTANCE VALUE OF THE SURFACE DRESSING SHALL NOT BE LESS THAN 45 MEASURED IN ACCORDANCE WITH BS EN 1436. THE SURFACE DRESSING SHALL BE BLACK IN COLOUR.
4. FOR DETAILS OF KEYHOLE PLASTIC PLUG REFER TO DRAWING NO. WSD 7.48.



Cad Ref. : WSD071502-E.dwg

MILD STEEL COVER AND FRAME TO
915 SQUARE MANHOLE OPENING



水務署
Water Supplies Department

APPROVED	G.C. LEE AD/NW
DATE	9/6/92
SCALE	1 : 10 OR AS SHOWN

DRAWING NO.	CSWP
WSD 7.15E	
(SHEET 2 OF 2)	