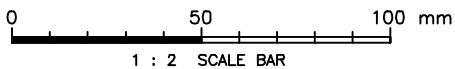


PLAN

NOTES :

1. ALL DIMENSIONS ARE IN MILLIMETRES.
2. STEP IRON SHALL BE MADE FROM GRADE 316S31 STAINLESS STEEL COMPLYING WITH BS 970 : PART 1. OTHER MATERIALS WITH APPROPRIATE PROTECTIVE COATING OR OTHER CORROSION RESISTANT MATERIALS MAY BE USED, IF APPROVED BY THE ENGINEER, TO FABRICATE THE STEP IRON.
3. THE STEP IRONS SHALL BE UNIFORMLY SPACED AT 250 TO 300mm.



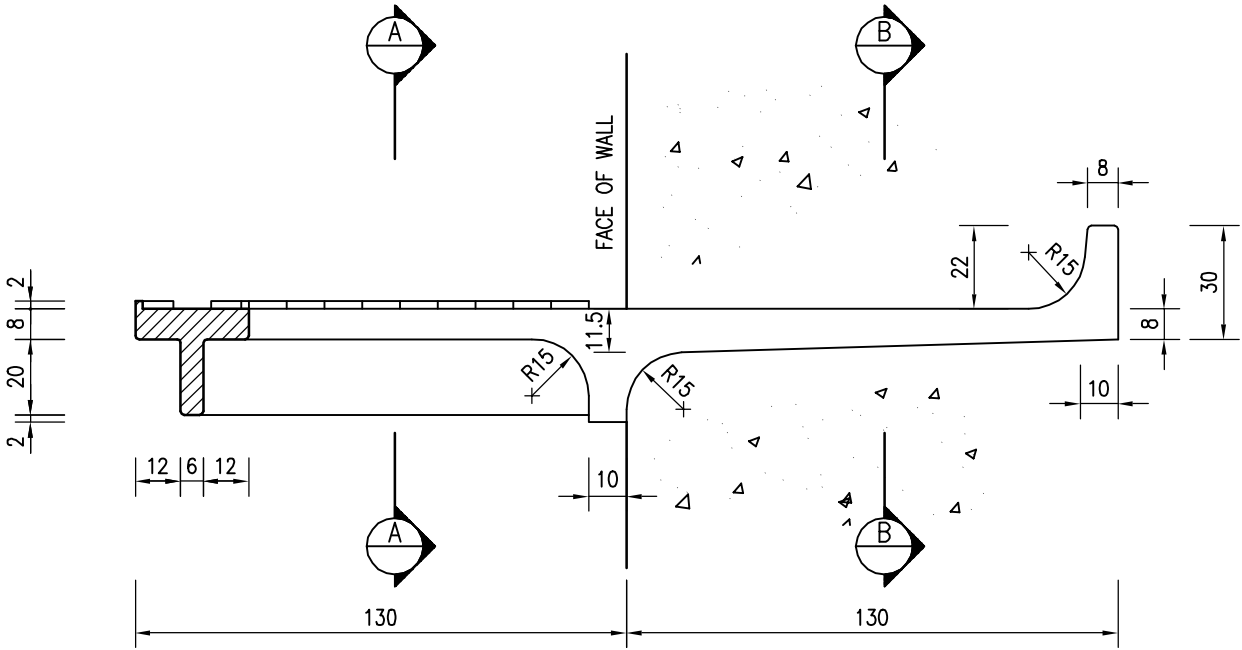
B	RE-FORMATTED TO CSWP	W.K. CHIU	14/11/03
A	GENERAL REVISION	W.K. CHIU	20/9/00
REF.	REVISION	APPROVED	DATE

STEP IRON

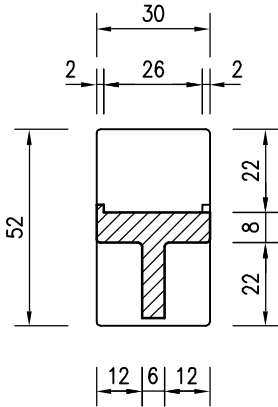


水務署  
Water Supplies Department

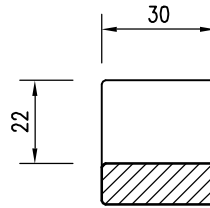
APPROVED	G.C. LEE AD/NW	DRAWING NO.	CSWP
DATE	9/6/92	WSD 7.8B	
SCALE	1 : 2	(SHEET 1 OF 2)	



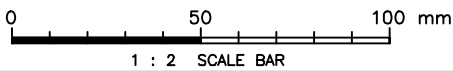
SECTIONAL ELEVATION



SECTION A - A



SECTION B - B



STEP IRON



水務署  
Water Supplies Department

APPROVED	G.C. LEE AD/NW	DRAWING NO.	WSD 7.8B (SHEET 2 OF 2)	CSWP
DATE	9/6/92			
SCALE	1 : 2			

Cad Ref. : WSD070802-B.dwg