

Cad Ref. : WSD070702-D.dwg

EXTENSION KEYS AND CLAMPS



水務署
Water Supplies Department

APPROVED

G.C. LEE
AD/NW

DATE

9/6/92

SCALE

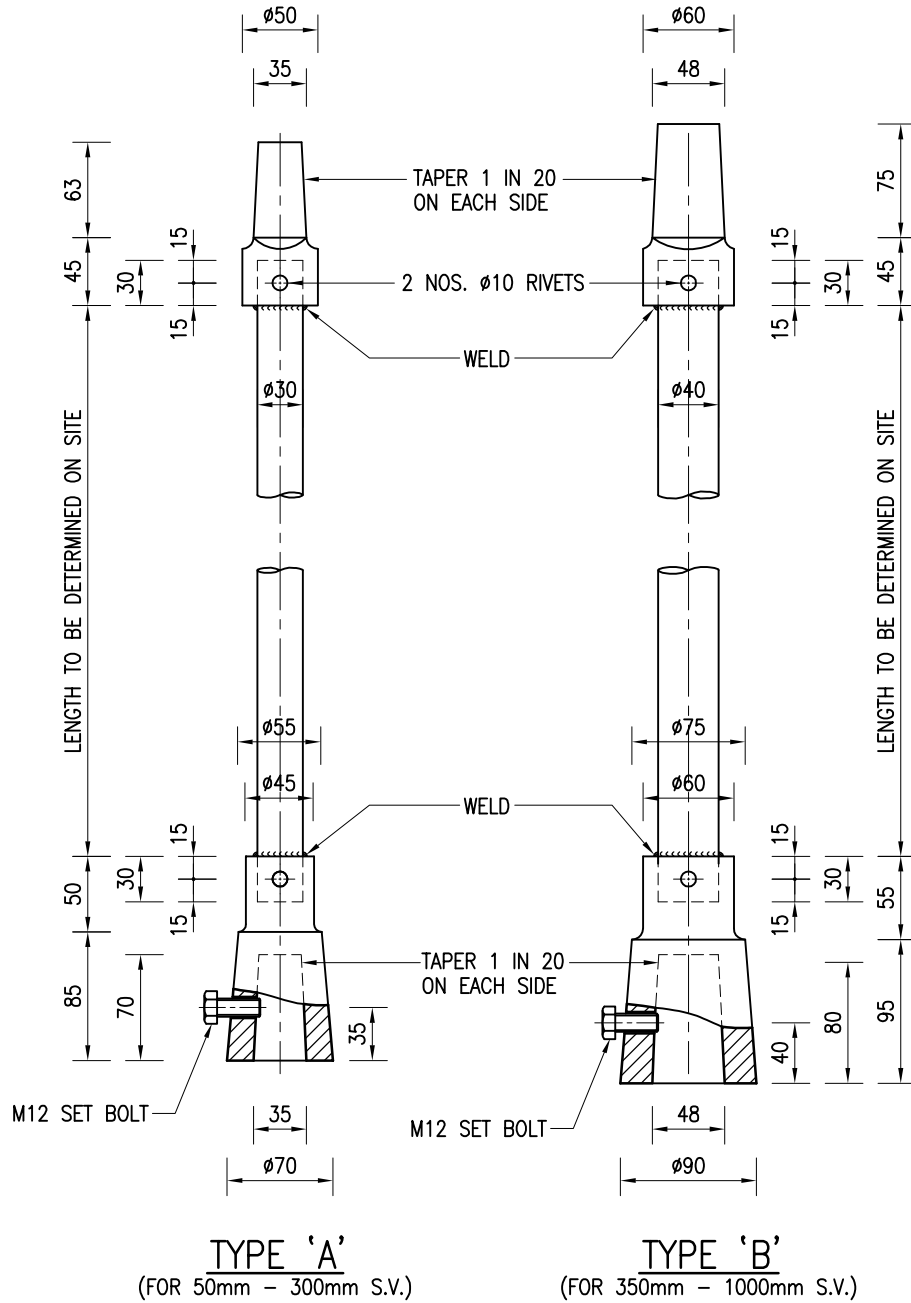
1 : 10

DRAWING NO.

WSD 7.7D

(SHEET 2 OF 3)

CSWP



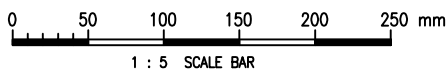
TYPE 'A'
(FOR 50mm - 300mm S.V.)

TYPE 'B'
(FOR 350mm - 1000mm S.V.)

EXTENSION KEY

NOTES :

1. ALL DIMENSIONS ARE IN MILLIMETRES.
2. THE MATERIALS FOR FABRICATION OF EXTENSION KEY, CLAMP AND ITS ASSOCIATED BOLTS, NUTS AND WASHERS SHALL BE STAINLESS STEEL OF STEEL NUMBER 1.4401 COMPLYING WITH BS EN 10088 OR MILD STEEL HOT-DIP GALVANIZED TO BS EN ISO 1461, AS SPECIFIED IN THE CONTRACT.
3. THE LOCATIONS AND DIMENSIONS OF KEYS, TYPE OF CLAMPS TO BE USED SHALL BE DETERMINED BY THE ENGINEER.



Cad Ref. : WSD070703-D.dwg

EXTENSION KEYS AND CLAMPS



水務署
Water Supplies Department

APPROVED

G.C. LEE
AD/NW

DATE

9/6/92

SCALE

1 : 5

DRAWING NO.

WSD 7.7D

(SHEET 3 OF 3)

CSWP