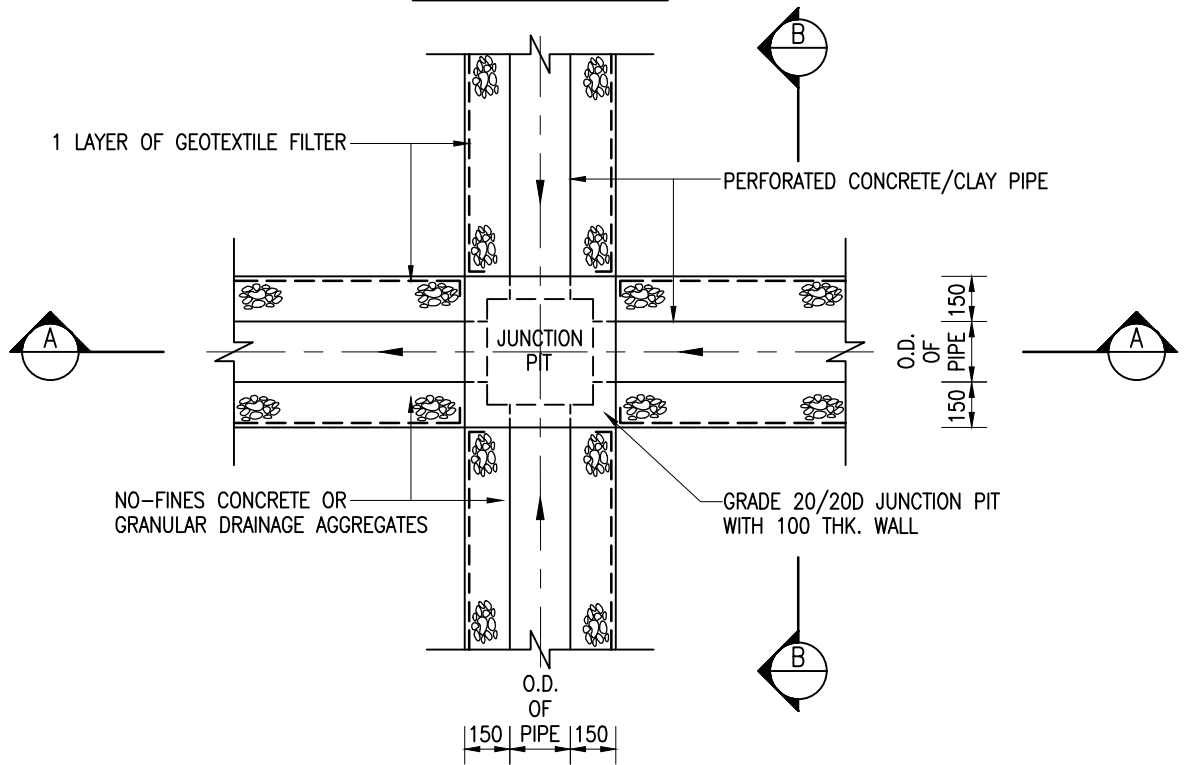


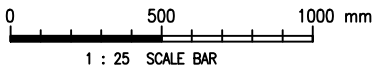
SECTION A - A



TYPICAL DETAILS OF JUNCTION PIT

NOTES :

1. ALL DIMENSIONS ARE IN MILLIMETRES.
2. LAYOUT OF UNDER FLOOR DRAINAGE SYSTEM SHALL BE AS SHOWN ON THE CONTRACT DRAWINGS.
3. SIZE OF DRAIN PIPE SHALL BE EITHER  $\varnothing 225$  OR  $\varnothing 300$  AS SPECIFIED IN THE CONTRACT.
4. ALL DRAIN PIPES SHALL HAVE NON-POROUS INVERT.
5. TYPES OF DRAIN PIPE AND DRAINAGE MATERIAL SHALL BE SPECIFIED IN THE CONTRACT.



Cad Ref. : WSD030101-D.dwg

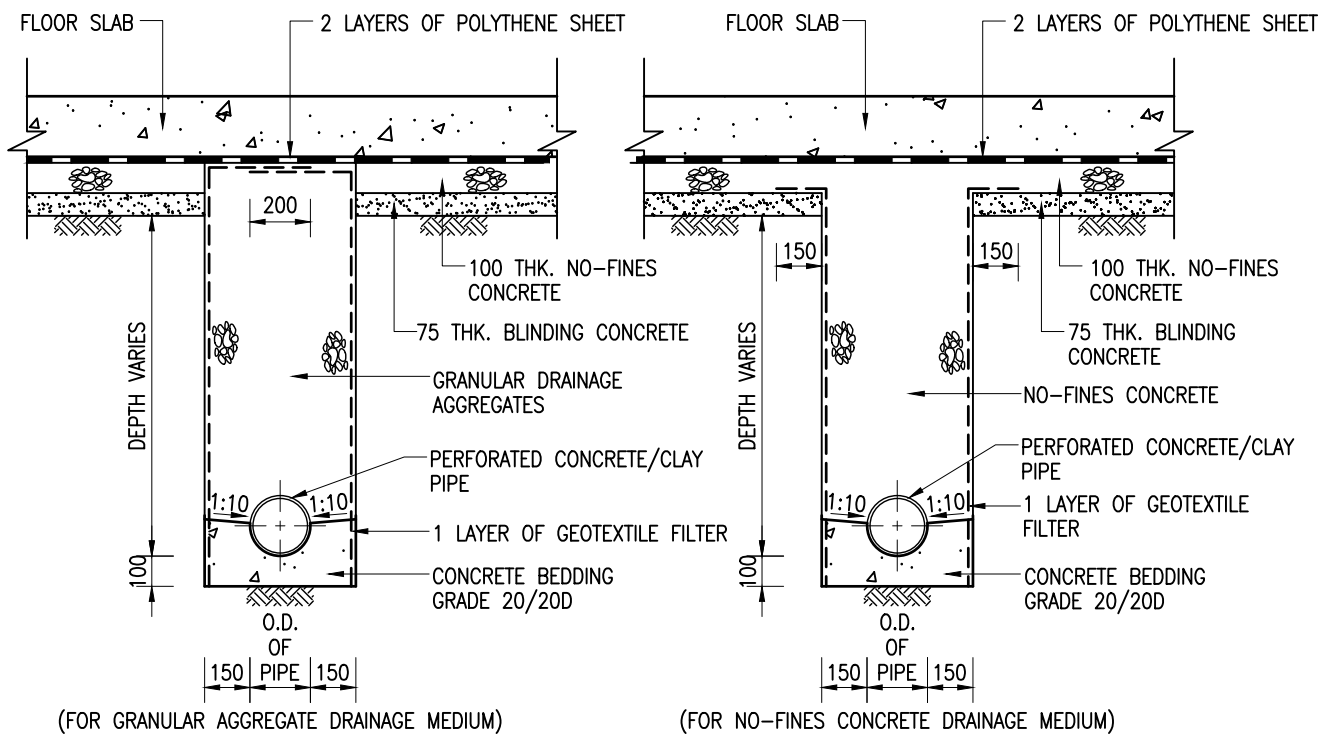
				B	RE-FORMATTED TO CSWP	W.K. CHIU	18/7/03
D	THE USE OF PERFORATED POLYTHYLENE PIPE IS DELETED.	C.H. LEUNG	8/4/24	A	DETAILS BETWEEN FLOOR SLAB AND SUB-SOIL DRAIN REVISED	W.K. CHIU	26/6/00
C	GENERAL REVISION	S.K. YEUNG	2/1/15	REF.	REVISION	APPROVED	DATE

UNDER FLOOR DRAINAGE

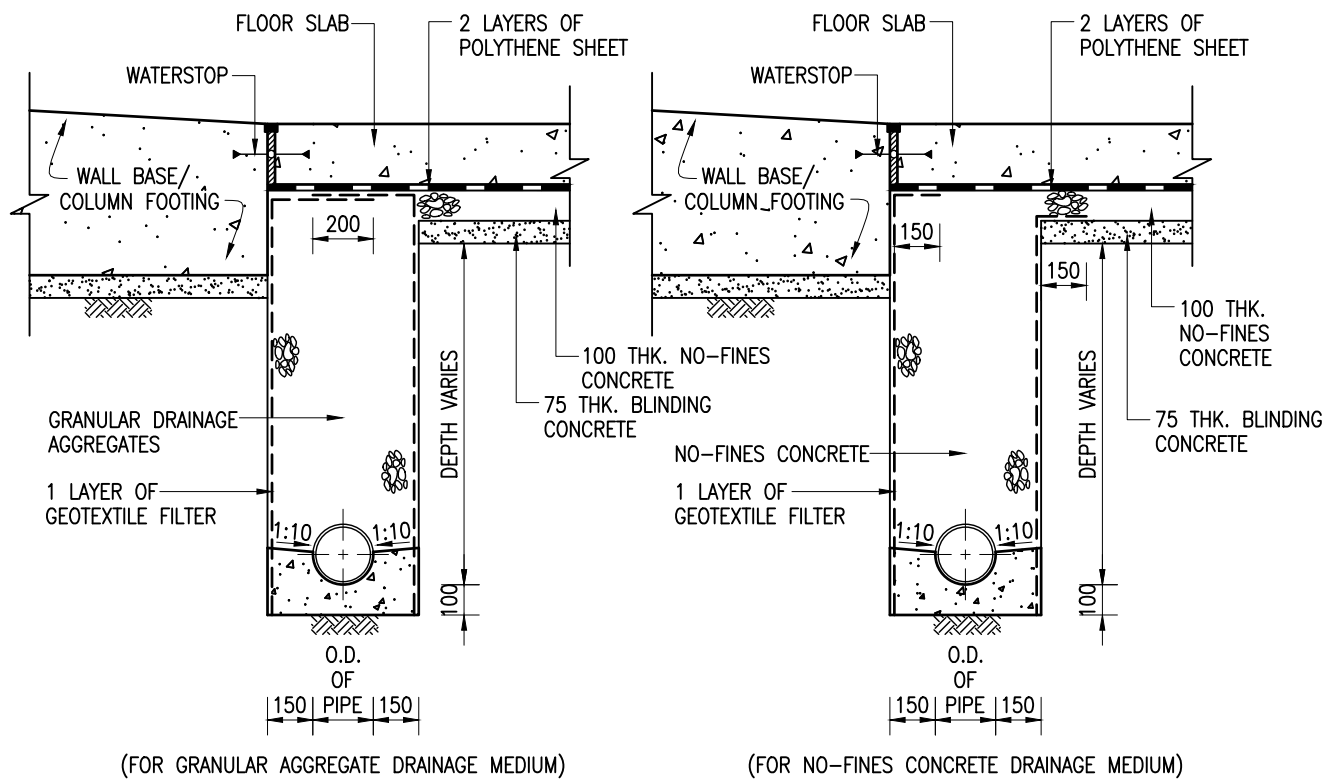


水務署  
Water Supplies Department

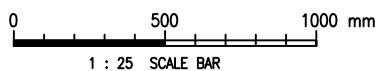
APPROVED	G.C. LEE AD/NW	DRAWING NO.	CSWP
DATE	9/6/92	WSD 3.1D	
SCALE	1 : 25	(SHEET 1 OF 2)	



**SECTION B - B**



**UNDER FLOOR DRAIN ADJACENT TO WALL BASE/COLUMN FOOTING**



Cad Ref. : WSD030102-D.dwg

UNDER FLOOR DRAINAGE



水務署  
Water Supplies Department

APPROVED

G.C. LEE  
AD/NW

DATE

9/6/92

SCALE

1 : 25

DRAWING NO.

WSD 3.1D

(SHEET 2 OF 2)

CSWP