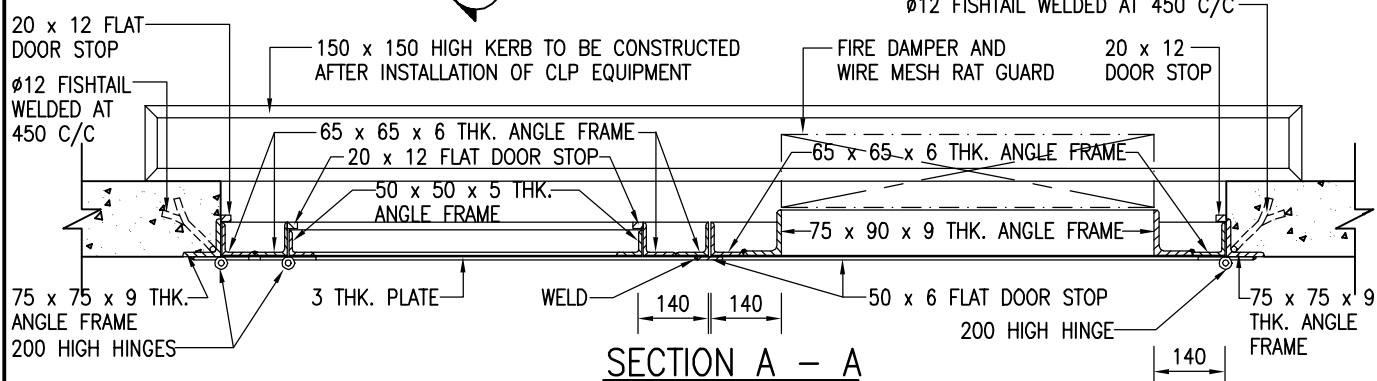


ELEVATION



SECTION A - A

Cad Ref. : WSD023001-B.dwg

B	RE-FORMATTED TO CSWP	W.K. CHIU	18/7/03
A	GENERAL REVISION	W.K. CHIU	10/10/00
REF.	REVISION	APPROVED	DATE

TYPICAL DETAILS OF DOUBLE-LEAF
STAINLESS STEEL DOOR WITH WICKET
ON THE LEFT
(CLP REQUIREMENTS)



水務署
Water Supplies Department

APPROVED

G.C. LEE
AD/NW

DATE

9/6/92

SCALE

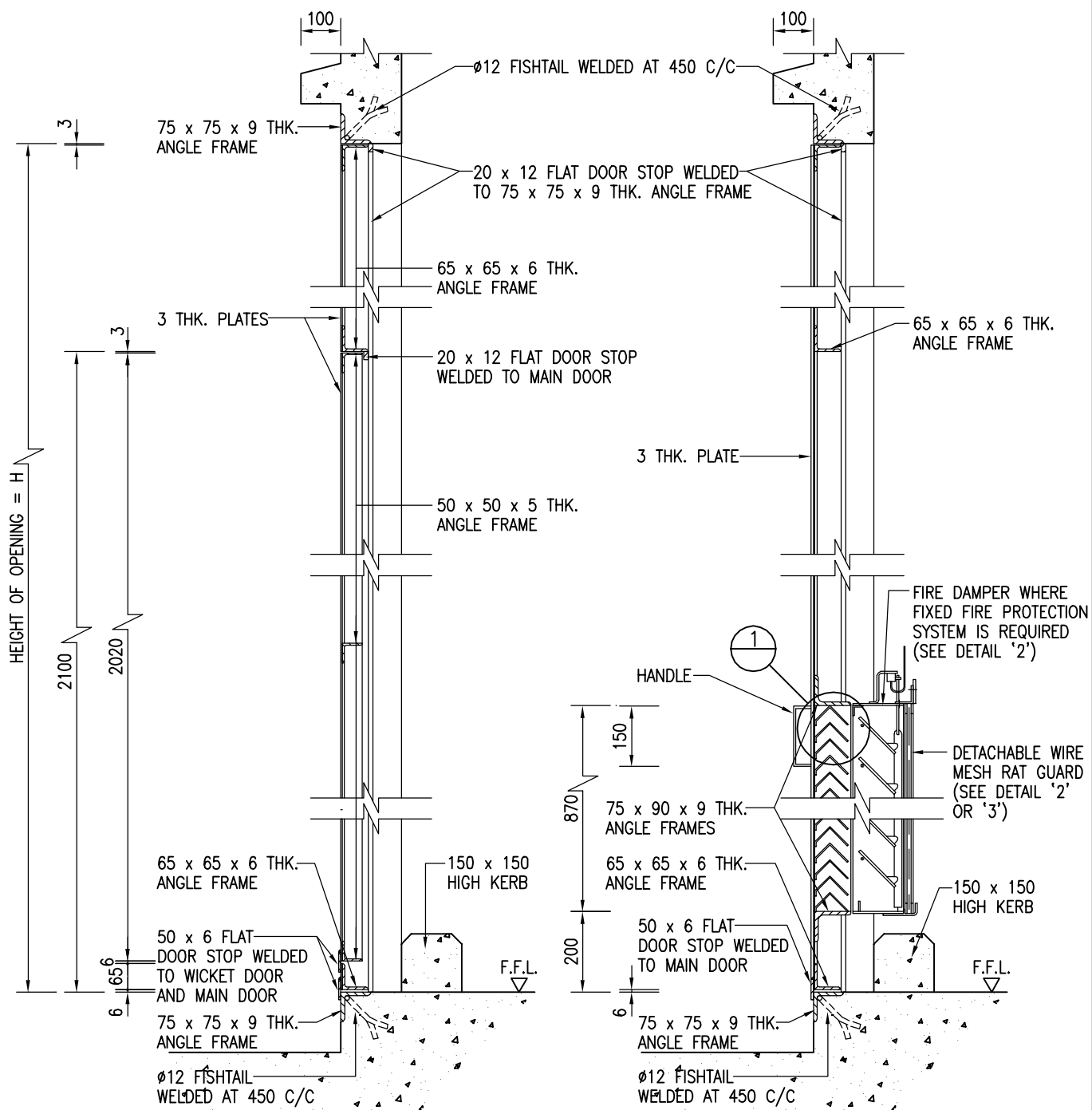
N.T.S.

DRAWING NO.

WSD 2.30B

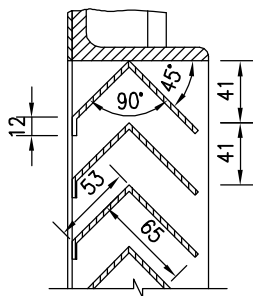
(SHEET 1 OF 4)

CSWP



SECTION B - B
N.T.S.

SECTION C - C
N.T.S.



DETAIL '1'
SCALE 1 : 5

TYPICAL DETAILS OF DOUBLE-LEAF
STAINLESS STEEL DOOR WITH WICKET
ON THE LEFT
(CLP REQUIREMENTS)



水務署
Water Supplies Department

APPROVED

G.C. LEE
AD/NW

DATE

9/6/92

SCALE

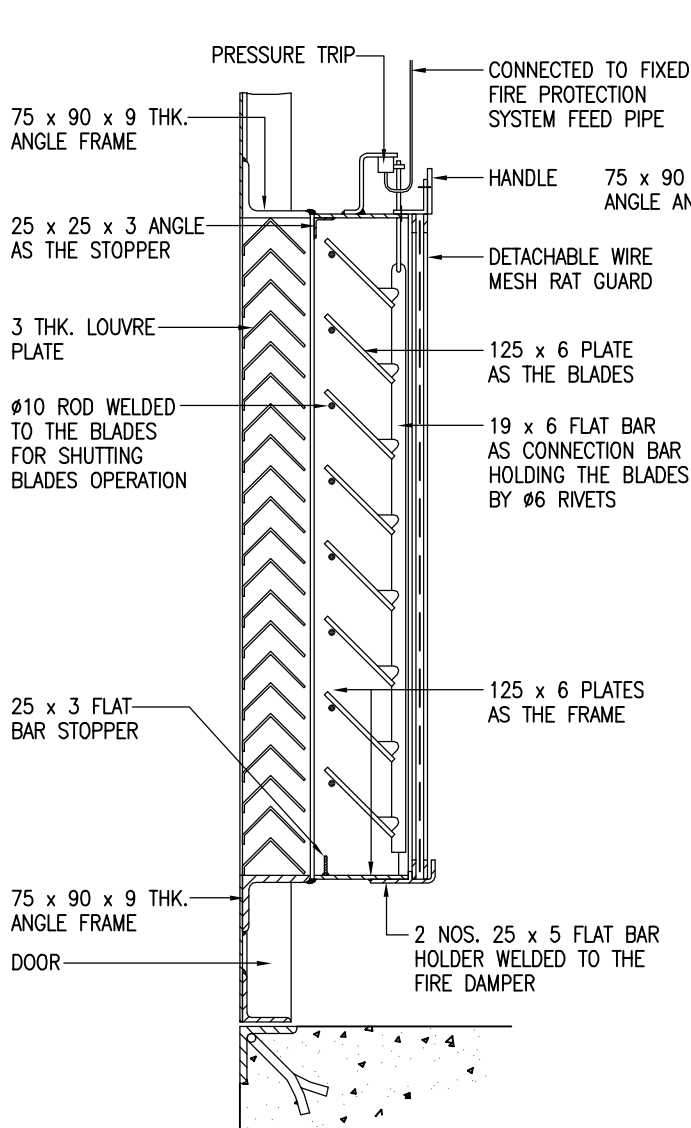
1 : 5 OR AS SHOWN

DRAWING NO.

WSD 2.30B

(SHEET 2 OF 4)

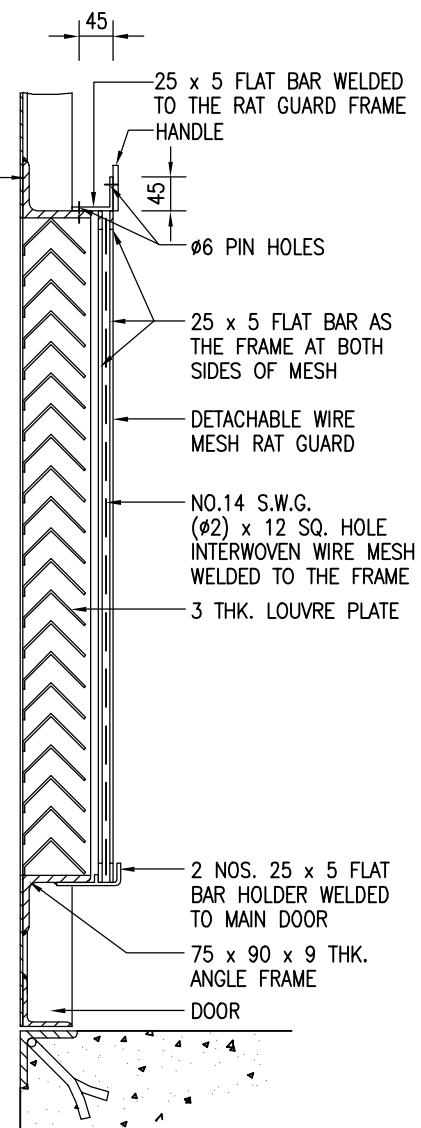
CSWP



DETAIL '2'

(SECTION FOR FIXING FIRE DAMPER AND WIRE MESH RAT GUARD)

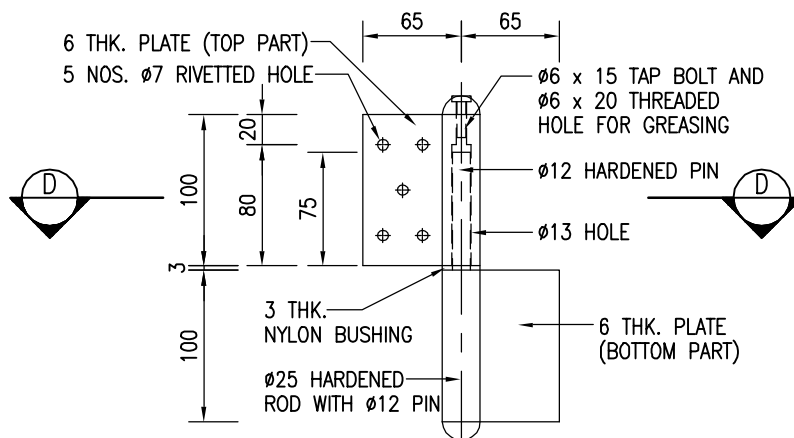
SCALE 1 : 10



DETAIL '3'

(SECTION FOR FIXING WIRE MESH RAT GUARD ONLY)

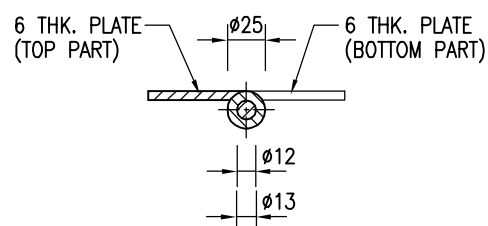
SCALE 1 : 10



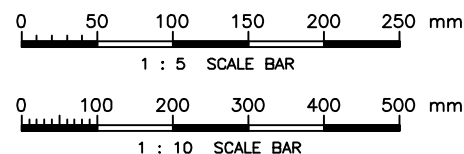
ELEVATION

DETAILS OF HINGE

SCALE 1 : 5



SECTION D - D



Cad Ref. : WSD023003-B.dwg

TYPICAL DETAILS OF DOUBLE-LEAF STAINLESS STEEL DOOR WITH WICKET ON THE LEFT (CLP REQUIREMENTS)



水務署
Water Supplies Department

APPROVED

G.C. LEE
AD/NW

DATE

9/6/92

SCALE

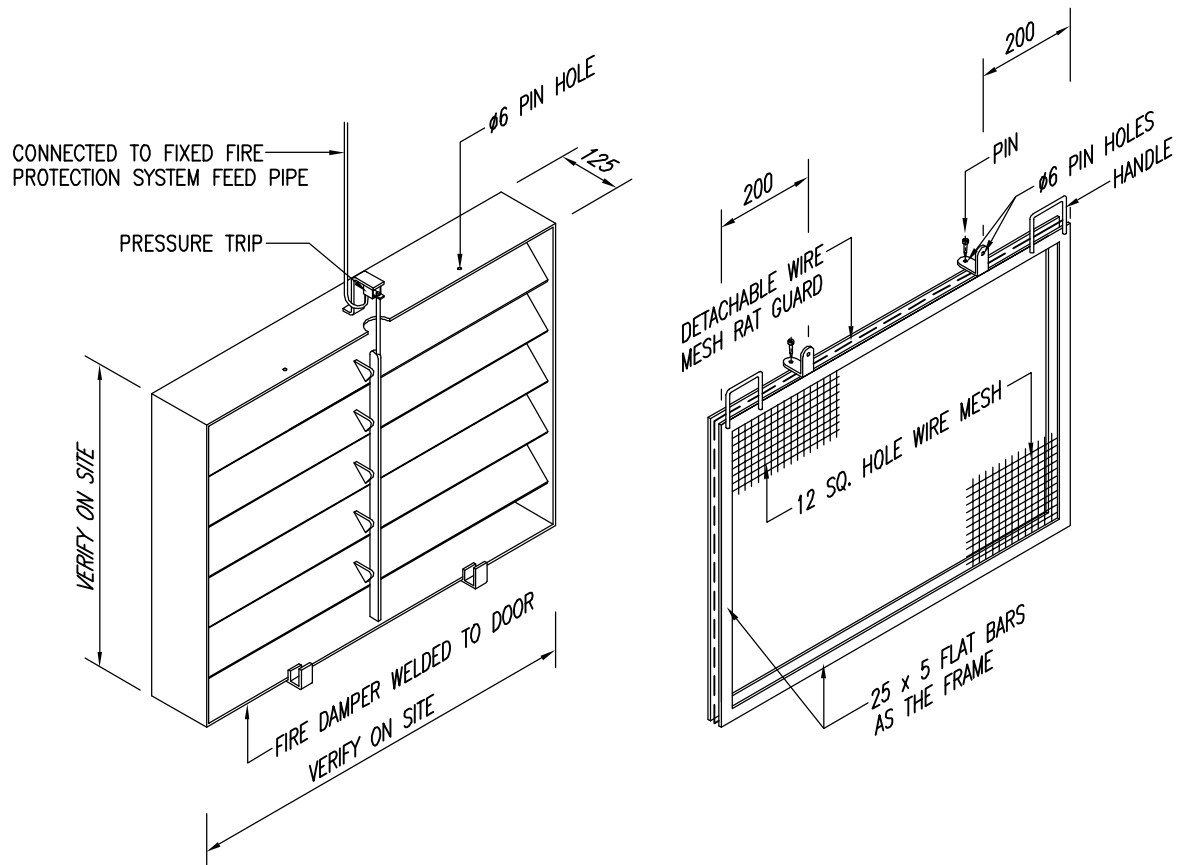
1 : 10 OR AS SHOWN

DRAWING NO.

WSD 2.30B

(SHEET 3 OF 4)

CSWP



ISOMETRIC VIEW AND ASSEMBLAGE OF
FIRE DAMPER AND WIRE MESH RAT GUARD

NOTES :

1. ALL DIMENSIONS ARE IN MILLIMETRES.
2. ALL CONNECTIONS OF STAINLESS STEEL WORKS SHALL BE WELDED.
3. ALL STEEL WORKS SHALL BE GRADE 316 S12 STAINLESS STEEL TO BS 970.
4. ALL STEEL WORKS MUST BE BONDED TO THE EARTHING TERMINAL AT THE DISTRIBUTION BOARD WITH COPPER CONDUCTOR NOT LESS THAN 6mm².
5. DIMENSION H AND W SHALL BE AS SHOWN ON THE CONTRACT DRAWINGS.
6. THE EMERGENCY EXIT DEADLOCK SET WITH PANIC BOLT SHALL BE PROVIDED BY CLP AND INSTALLED BY THE CIVIL CONTRACTOR.
7. THE STANDARD LOCK SHALL BE PROVIDED AND INSTALLED BY CLP.
8. FOR DOOR WITH WICKET ON THE RIGHT, DETAILS ARE SIMILAR BUT HANDED.

TYPICAL DETAILS OF DOUBLE-LEAF
STAINLESS STEEL DOOR WITH WICKET
ON THE LEFT
(CLP REQUIREMENTS)



水務署
Water Supplies Department

APPROVED

G.C. LEE
AD/NW

DATE

9/6/92

SCALE

N.T.S.

DRAWING NO.

WSD 2.30B
(SHEET 4 OF 4)

CSWP