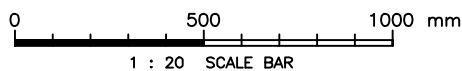


SECTION A - A



920mm WIDE SINGLE-LEAF
STAINLESS STEEL DOOR
(HEC REQUIREMENTS)



水務署
Water Supplies Department

APPROVED

G.C. LEE
AD/NW

DATE

9/6/92

SCALE

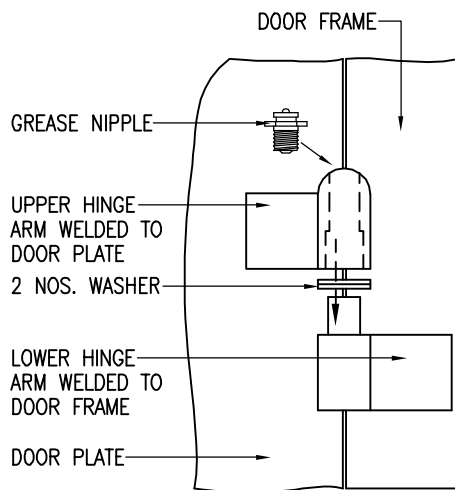
1 : 20

DRAWING NO.

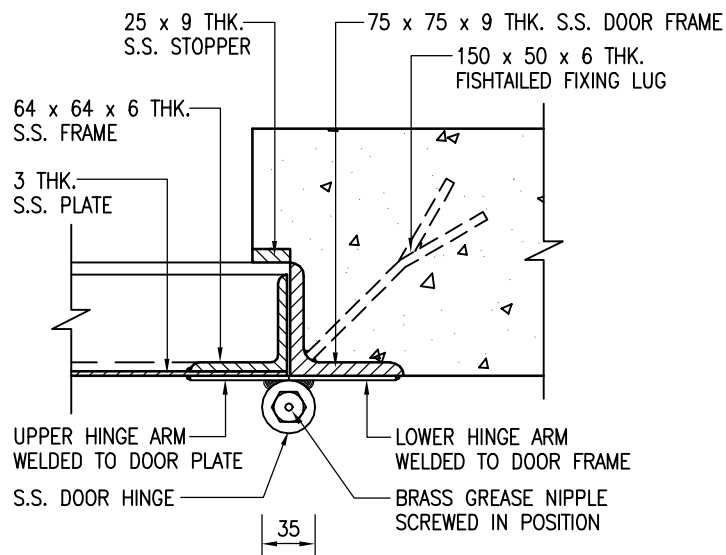
WSD 2.20C

(SHEET 2 OF 5)

CSWP



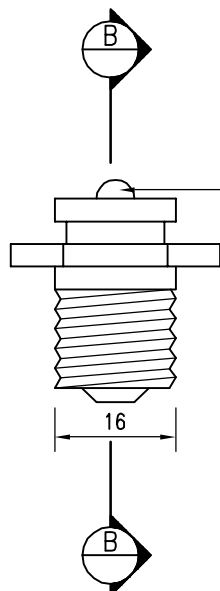
ELEVATION



PLAN

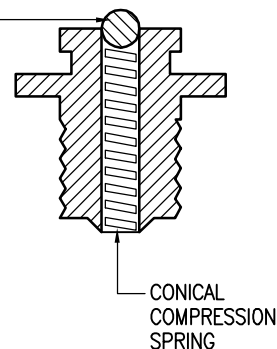
DETAILS OF DOOR HINGE

SCALE 1 : 5

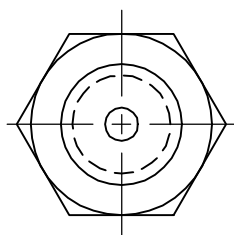


ELEVATION

STEEL BALL



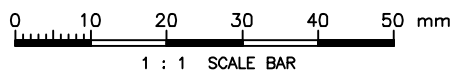
SECTION B - B



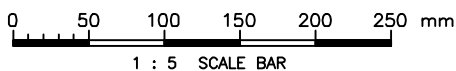
PLAN

DETAILS OF BRASS GREASE NIPPLE

SCALE 1 : 1



1 : 1 SCALE BAR



1 : 5 SCALE BAR

Cad Ref. : WSD022003-C.dwg

920mm WIDE SINGLE-LEAF
STAINLESS STEEL DOOR
(HEC REQUIREMENTS)



水務署
Water Supplies Department

APPROVED

G.C. LEE
AD/NW

DATE

9/6/92

SCALE

1 : 5 OR AS SHOWN

DRAWING NO.

WSD 2.20C

(SHEET 3 OF 5)

CSWP

(SHEET 4 OF 5)

NOTES :

1. ALL DIMENSIONS ARE IN MILLIMETRES.
2. THE DOOR FRAME, PLATE, ANGLE, ROD, RIVET, HINGE, ANCHORING COMPONENT, WIRE MESH, BOLT, NUT AND WASHER SHALL BE OF GRADE 316 STAINLESS STEEL.
3. THE FINISHING OF DOOR SHALL BE OF FINISH NO. 2B ACCORDING TO BS 1449, PART 2.
4. WELDING TREATMENT AT THE DOOR SHALL BE SUITABLE FOR STAINLESS STEEL AND MUST NOT CREATE WEAK SPOTS AGAINST CORROSION AT THE WELDS. WELDING RODS OF GRADE 316 OR GRADE 317 STAINLESS STEEL SHALL BE USED. WELDING METHOD AND PROCEDURES MUST COMPLY WITH BS 4872. AFTER WELDING, THE WELD SURFACE MUST BE BRUSHED CLEAN TO REMOVE ALL WELDING FLUX AND DIRT. THE SURFACE SHALL THEN BE SOLVENT-CLEANED TO REMOVE ALL RESIDUAL DIRT AND GREASE. AFTER DRYING, AN UNDERCOAT OF PRIMER FOLLOWED BY TWO COATS OF SILVER COLOURED ENAMEL PAINT SHALL BE APPLIED ON THE WELD SURFACE.
5. THE DOORS SHALL BE COVERED WITH PLASTIC SHEETS AT THE TIME THE TRANSFORMER ROOM IS HANDED OVER AND SUCH PLASTIC SHEETS SHALL NOT BE REMOVED UNTIL THE BUILDING CONSTRUCTION WORK IS COMPLETED.
6. MOVING PARTS OF HINGE SHALL BE WEATHER-PROOF. GREASE SHALL BE APPLIED ON BOTH SIDE OF THE WASHERS AT THE HINGES AND ON THE HINGE SHAFT.

Cad Ref. :WSD022005-C.dwg

920mm WIDE SINGLE-LEAF
STAINLESS STEEL DOOR
(HEC REQUIREMENTS)



水務署
Water Supplies Department

APPROVED

G.C. LEE
AD/NW

DATE

9/6/92

SCALE

NOT APPLICABLE

DRAWING NO.

WSD 2.20C
(SHEET 5 OF 5)

CSWP