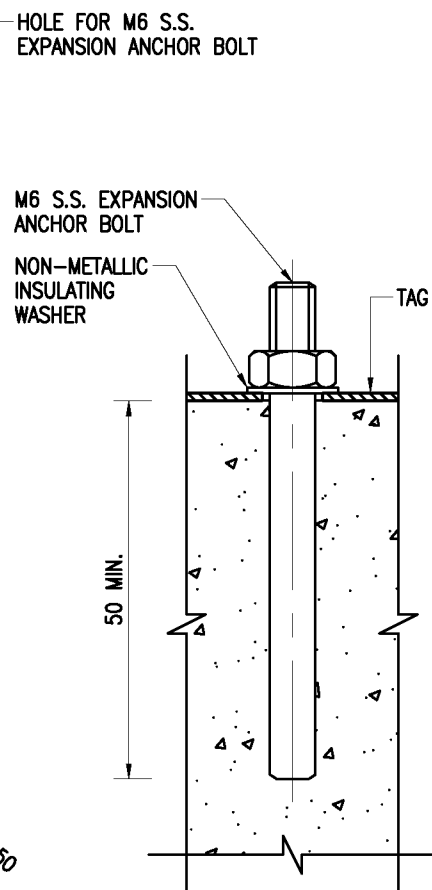
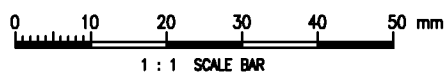



FRONT ELEVATION OF TAG



EXPANSION ANCHOR BOLT




DIGITAL IDENTIFICATION TAG

REF.	REVISION	APPROVED	DATE
<div style="display: flex; align-items: center; justify-content: space-between;">  <div> <p>水務署</p> <p>Water Supplies Department</p> </div> </div>			
APPROVED	H.W. MA AD/NW	DRAWING NO.	CSWP
DATE	6/11/25	WSD 1.56 (SHEET 1 OF 2)	
SCALE	1 : 1		

NOTES :

1. ALL DIMENSIONS ARE IN MILLIMETRES.
2. THE TYPE OF TAG TO BE USED SHALL BE AS FOLLOWS :
 TYPE I CRITICAL VALVE AS SPECIFIED BY THE ENGINEER
 TYPE II NON-CRITICAL VALVE
3. THE CODES OF THE PAINT COLOURS SHALL BE IN ACCORDANCE WITH BS 5252 AS FOLLOWS :
 TYPE I TAG:
 LETTERING AND QR CODE IN RED COLOUR CODE 04 E 56
 TYPE II TAG:
 LETTERING AND QR CODE IN BLACK COLOUR CODE 00 E 53
4. REFERENCE NUMBER AND QR CODE SHOWN ON THE DRAWING ARE FOR ILLUSTRATION ONLY. THE ACTUAL VALVE REFERENCE NUMBER AND QR CODE SHALL BE SPECIFIED BY THE ENGINEER.
5. THE REFERENCE NUMBER SHALL BE OF ARIAL FONT.
6. THE REFERENCE NUMBER SHALL BE CENTRALLY ALIGNED IN THE HORIZONTAL DIRECTION.
7. THE TAG SHALL BE MADE OF 1mm THICK POLISHED STAINLESS STEEL OF GRADE 1.4401, COMPLYING WITH BS EN 10088.
8. STAINLESS STEEL EXPANSION ANCHOR BOLTS SHALL BE OF STEEL GRADE A4 TO BS EN ISO 3506.
9. IN THE CASE THE SPACE INSIDE THE CHAMBER IS TOO SMALL FOR INSTALLATION OF EXPANSION ANCHOR BOLTS, THE EXPANSION ANCHOR BOLTS SHALL BE OMITTED AND THE TAG SHALL BE FIXED TO THE CHAMBER BY EPOXY RESIN ADHESIVE APPROVED BY THE ENGINEER. THE ADHESIVE SHALL SHOW GOOD ADHESION TO CONCRETE (OR THE MATERIAL OF THE MANHOLE WALL IF IT IS NOT CONCRETE) AND STAINLESS STEEL, AND GOOD ADHESION TO WET SURFACE IF THE SITUATION REQUIRES.
10. THE IDENTIFICATION TAG SHALL BE FIXED TO AN INTERIOR WALL OF THE CHAMBER WITH THE TOP OF THE TAG NO MORE THAN 50mm OF THE MANHOLE COVER SUCH THAT THE TAG IS READABLE BY ELECTRONIC DEVICES HELD BY A STANDING STAFF.

Cod Ref. : WSD015602.dwg

DIGITAL IDENTIFICATION TAG	 水務署 Water Supplies Department		
	APPROVED	H.W. MA AD/NW	DRAWING NO. CSWP WSD 1.56 (SHEET 2 OF 2)
	DATE	6/11/25	
	SCALE	NOT APPLICABLE	