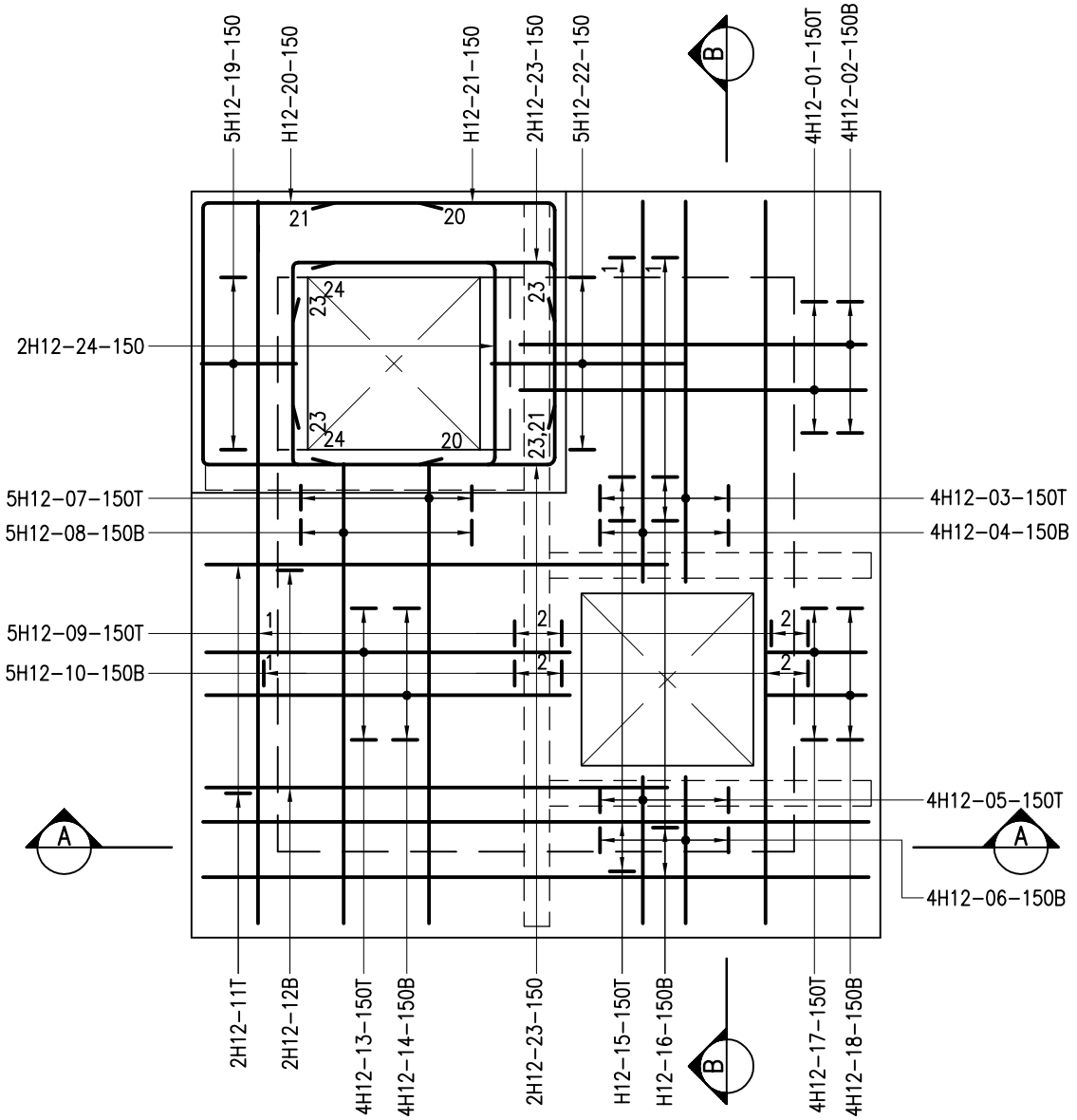


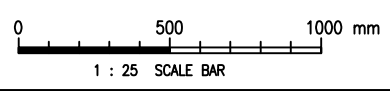
Cad Ref. : WSD015201-A.dwg



**PLAN**

**NOTES :**

1. ALL DIMENSIONS ARE IN MILLIMETRES.
2. ALL REINFORCED CONCRETE SHALL BE GRADE 35/20D. BLINDING CONCRETE SHALL BE GRADE 20/20D.
3. NOMINAL COVER TO REINFORCEMENT SHALL BE 40mm UNLESS OTHERWISE SPECIFIED.
4. FOR DESCRIPTION OF REINFORCEMENT REFER TO DRAWING NO. WSD 7.1.
5. MINIMUM LAP LENGTH FOR RIBBED STEEL REINFORCING BARS SHALL BE 43 TIMES THE DIAMETER OF THE SMALLER LAPPED BAR UNLESS OTHERWISE SPECIFIED.
6. DETAILS OF PIPE OPENING REINFORCEMENT SHALL BE IN ACCORDANCE WITH DRAWING NO. WSD 1.12.

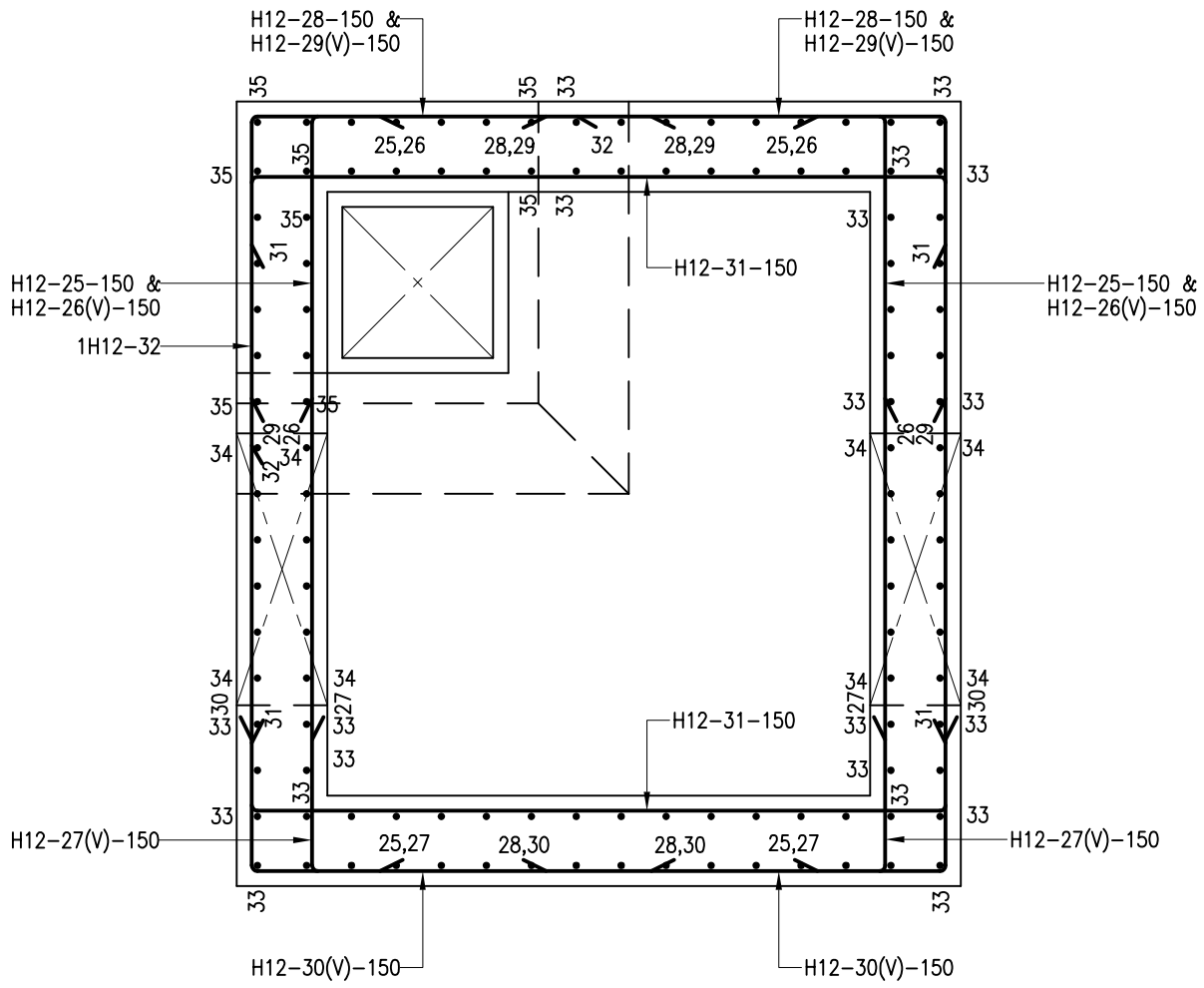


A	GENERAL REVISION	S.K. YEUNG	2/1/15
REF.	REVISION	APPROVED	DATE

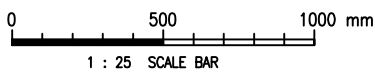
**MULTI-PURPOSE INSPECTION  
TEE CHAMBER -  
R.C. DETAILS**

 <b>水務署</b> <b>Water Supplies Department</b>		DRAWING NO. <b>WSD 1.52A</b> (SHEET 1 OF 4)	CSWP
APPROVED	W.L. LEUNG AD/NW		
DATE	15/2/12		
SCALE	1 : 25		

Cad Ref. : WSD015202-A.dwg



SECTIONAL PLAN

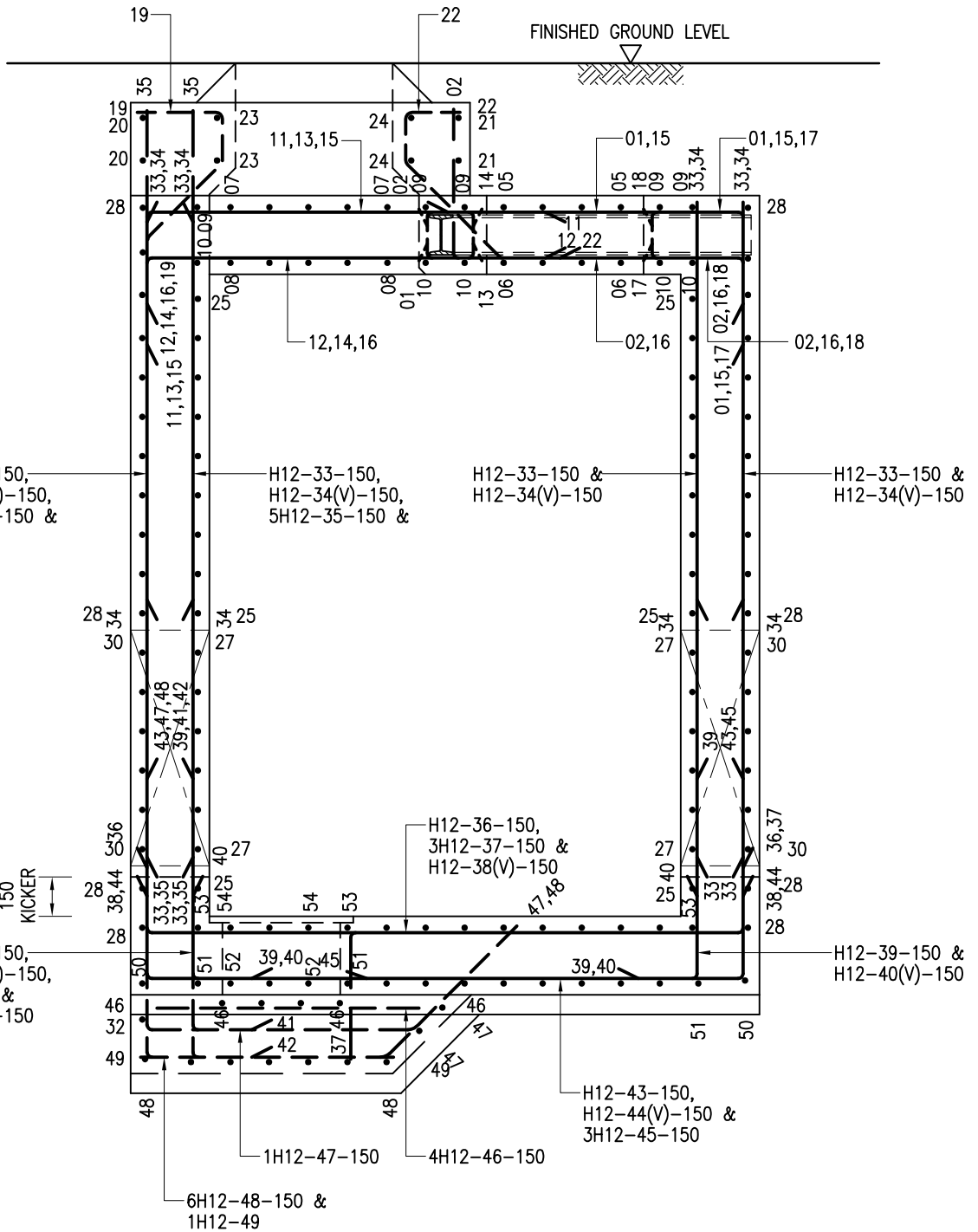


MULTI-PURPOSE INSPECTION  
TEE CHAMBER –  
R.C. DETAILS



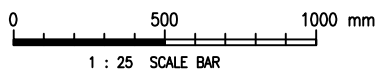
**水務署**  
**Water Supplies Department**

<b>APPROVED</b>	W.L. LEUNG AD/NW	<b>DRAWING NO.</b>	<b>CSWP</b>
<b>DATE</b>	15/2/12	<b>WSD 1.52A (SHEET 2 OF 4)</b>	
<b>SCALE</b>	1 : 25		



SECTION A - A

Cad Ref. : WSD015203-A.dwg



MULTI-PURPOSE INSPECTION  
TEE CHAMBER -  
R.C. DETAILS



水務署  
Water Supplies Department

APPROVED

W.L. LEUNG  
AD/NW

DRAWING NO.

CSWP

DATE

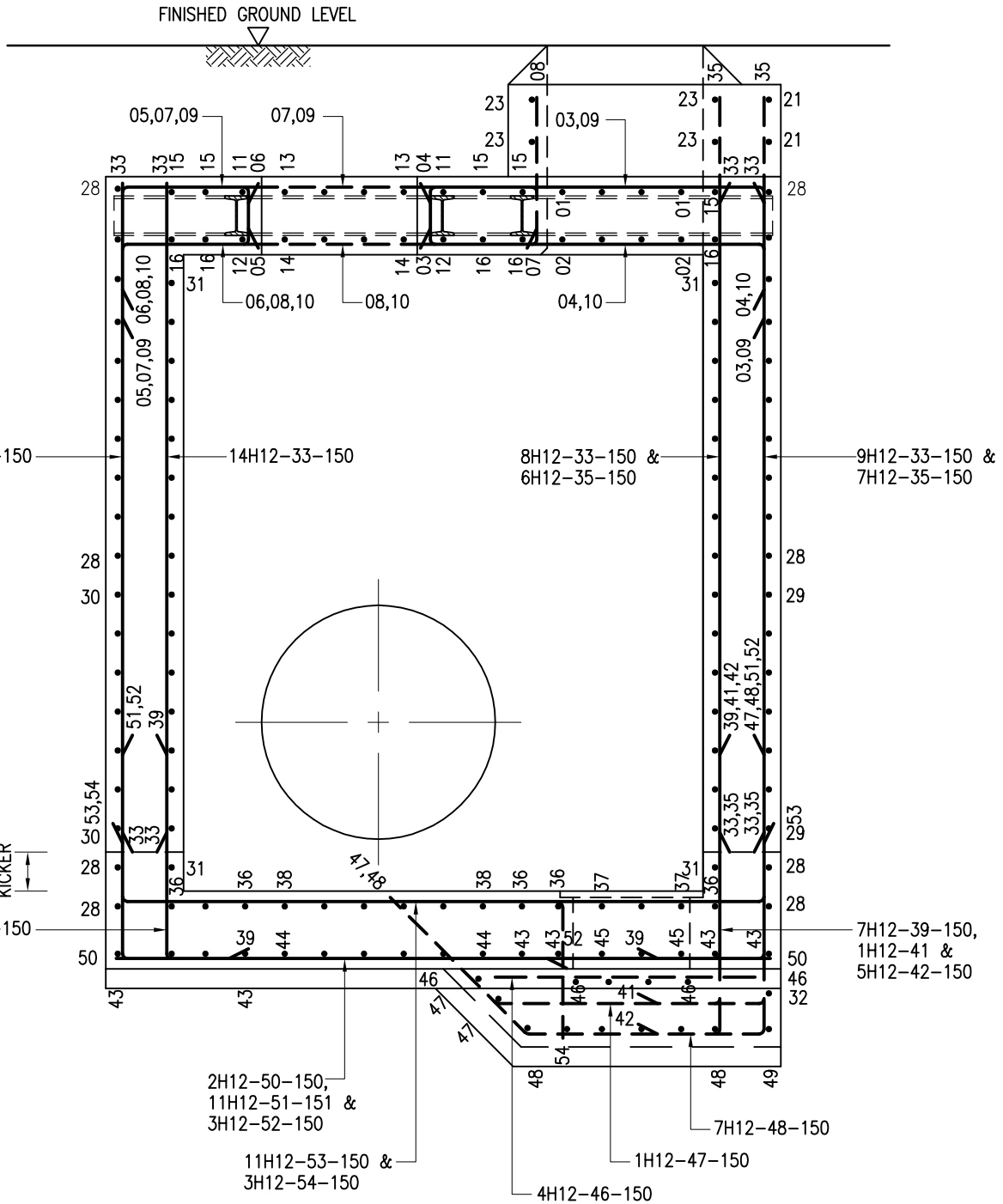
15/2/12

WSD 1.52A

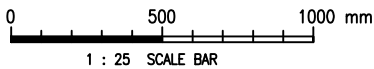
SCALE

1 : 25

(SHEET 3 OF 4)



**SECTION B - B**



**MULTI-PURPOSE INSPECTION  
TEE CHAMBER -  
R.C. DETAILS**



**水務署  
Water Supplies Department**

APPROVED

W.L. LEUNG  
AD/NW

DATE

15/2/12

SCALE

1 : 25

DRAWING NO.

WSD 1.52A

(SHEET 4 OF 4)

CSWP