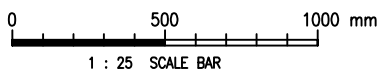


ROOF PLAN

Cod Ref. : WSD014201-A.dwg



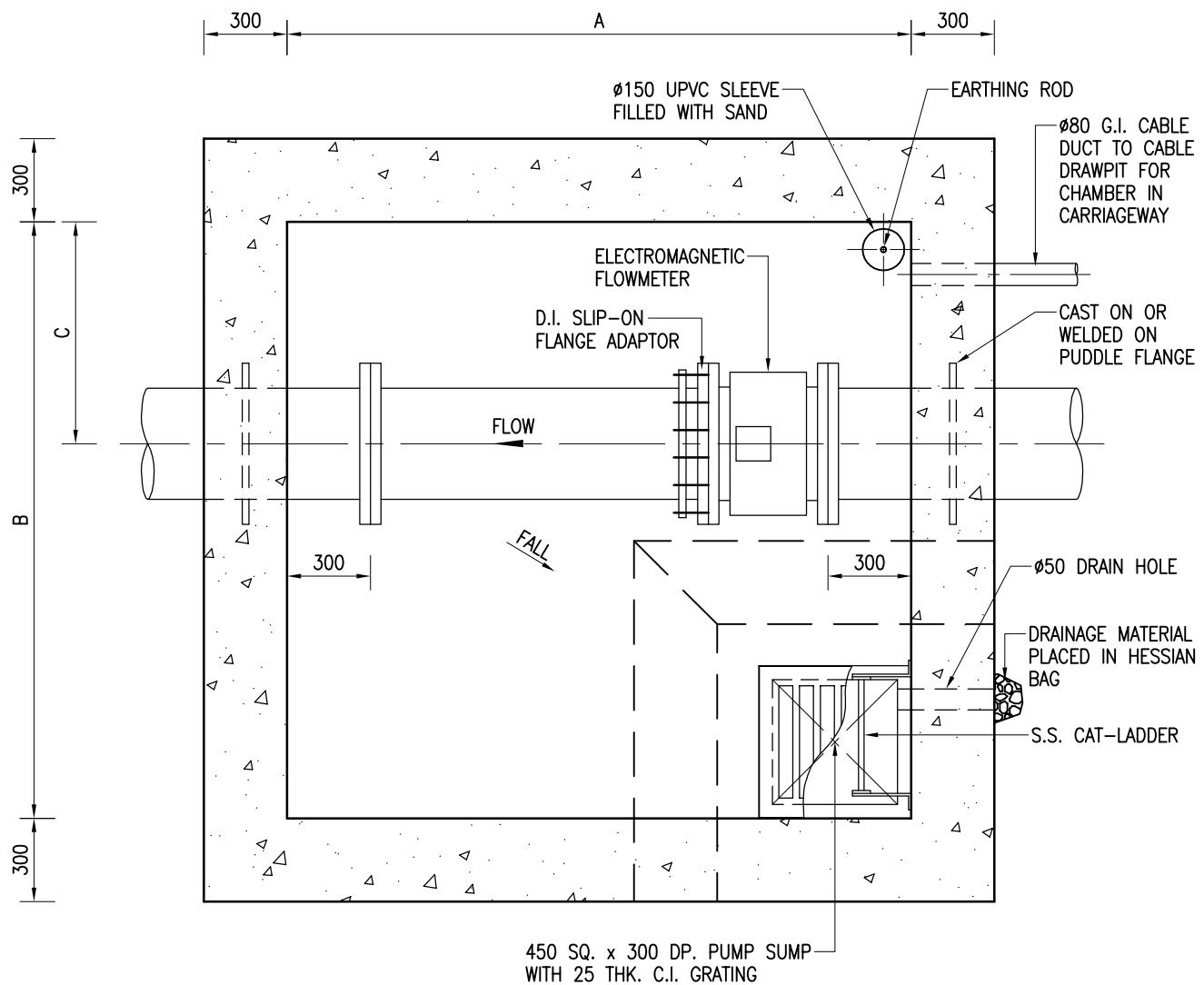
A	NOTE 16 ADDED	M.K. HA	26/11/08
REF.	REVISION	APPROVED	DATE

ELECTROMAGNETIC FLOWMETER
CHAMBER FOR PIPE SIZE DN400
OR ABOVE –
GENERAL ARRANGEMENT

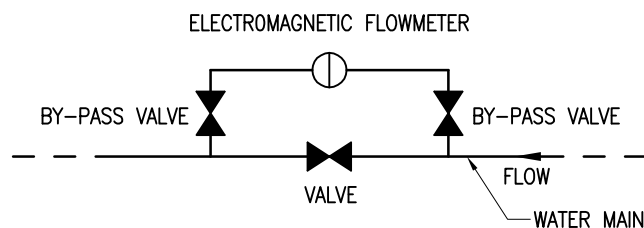


水務署
Water Supplies Department

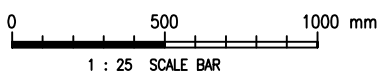
APPROVED	M.C. LEUNG AD/NW	DRAWING NO.	CSWP
DATE	3/3/06	WSD 1.42A (SHEET 1 OF 5)	
SCALE	1 : 25		



SECTIONAL PLAN



CONFIGURATION OF ELECTROMAGNETIC FLOWMETER



Cod Ref. : WSD014202-A.dwg

**ELECTROMAGNETIC FLOWMETER
CHAMBER FOR PIPE SIZE DN400
OR ABOVE -
GENERAL ARRANGEMENT**



**水務署
Water Supplies Department**

APPROVED

M.C. LEUNG
AD/NW

DATE

3/3/06

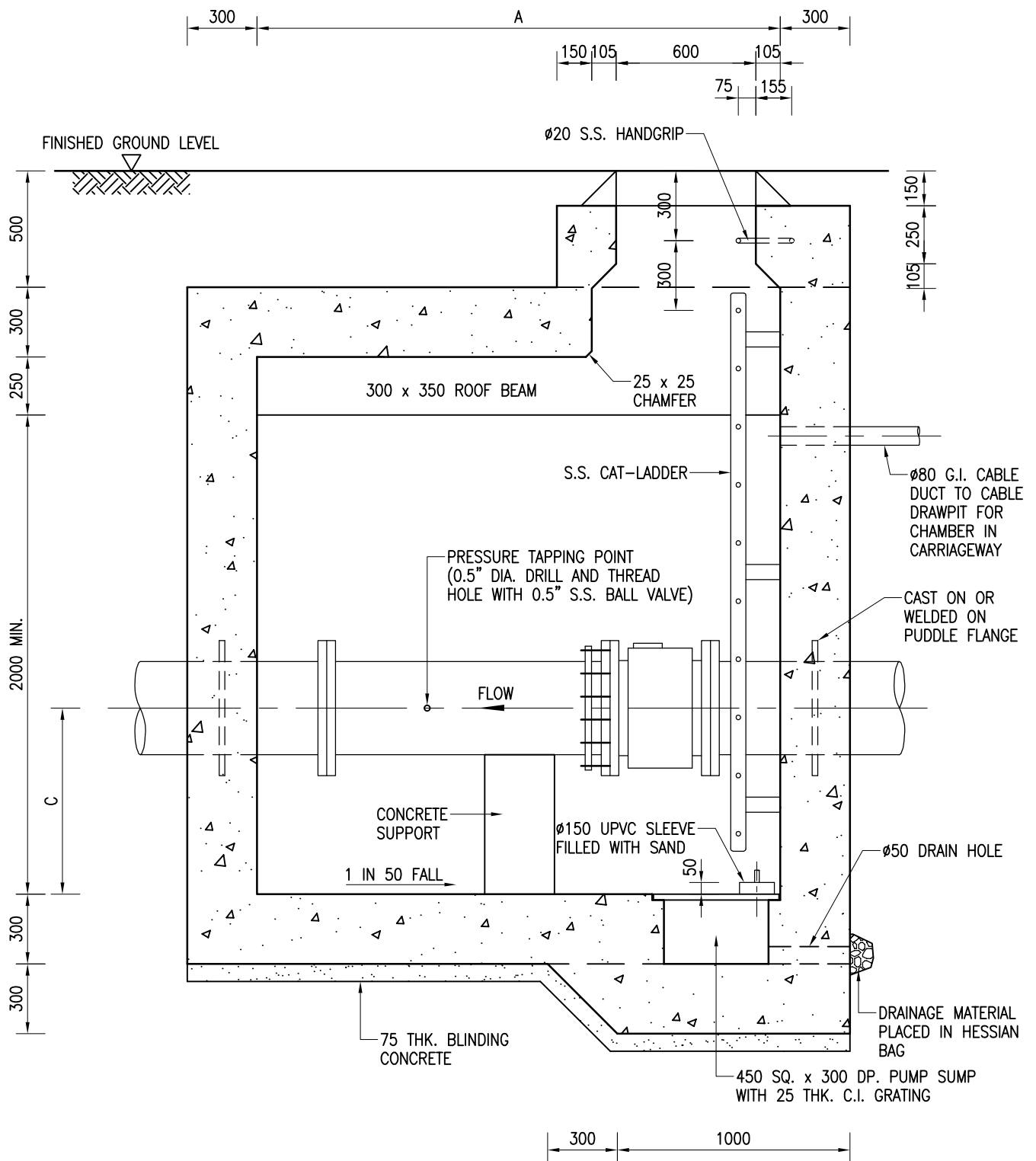
SCALE

1 : 25

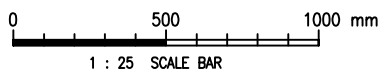
DRAWING NO.

WSD 1.42A
(SHEET 2 OF 5)

CSWP



Cad Ref. : WSD014203-A.dwg



ELECTROMAGNETIC FLOWMETER
CHAMBER FOR PIPE SIZE DN400
OR ABOVE -
GENERAL ARRANGEMENT



水務署
Water Supplies Department

APPROVED

M.C. LEUNG
AD/NW

DRAWING NO.

CSWP

DATE

3/3/06

WSD 1.42A

SCALE

1 : 25

(SHEET 3 OF 5)

DIMENSIONS OF ELECTROMAGNETIC FLOWMETER CHAMBERS

NOMINAL DIA. OF PIPE (DN)	DIMENSIONS (mm)		
	A	B	C
400	1800	1850	600
450	1900	1900	650
600	2200	2150	800

NOTES :

1. ALL DIMENSIONS ARE IN MILLIMETRES UNLESS OTHERWISE SPECIFIED.
2. THE METER CHAMBER SHALL BE SITED IN FOOTWAY OR IN VERGE TO AVOID TRAFFIC AND ON A BY-PASS BRANCH OFF THE PRINCIPAL MAIN. IN CASE CHAMBER IS SITED IN CARRIAGEWAY, CABLE DRAWPIT SHALL BE PROVIDED. FOR DETAILS OF CABLE DRAWPIT REFER TO DRAWING NO. WSD 7.16. THE CABLE DRAWPIT SHALL BE LOCATED NEAR TO THE CHAMBER SUCH THAT THE LENGTH OF THE NYLON DRAW WIRE INSTALLED FROM THE EARTHING ROD TO THE DRAWPIT SHALL NOT EXCEED 18 METRES.
3. THE CENTRE LINE OF THE PIPEWORK SHALL PREFERABLY BE HORIZONTAL.
4. CONCRETE TO CHAMBER SHALL BE GRADE 35/20D. BLINDING CONCRETE SHALL BE GRADE 20/20D.
5. ALL NEWLY LAID WATER MAINS MUST BE CLEANED AND STERILIZED BEFORE THE INSTALLATION OF THE METER INSIDE THE CHAMBER.
6. A MINIMUM OF 5D STRAIGHT PIPE UPSTREAM AND 2D STRAIGHT PIPE DOWNSTREAM FROM THE CHAMBER POSITION SHALL BE PROVIDED WHERE D IS THE PIPE OUTSIDE DIAMETER.
7. THE ELECTROMAGNETIC FLOWMETER SHALL BE 'ABB' BATTERY-OPERATED ELECTRONIC METER OR EQUIVALENT AS APPROVED BY THE ENGINEER.
8. FOR TOP TREATMENT APPLIED TO THE MANHOLE COVER REFER TO DRAWING NO. WSD 1.24.
9. FOR DETAILS OF EARTHING ROD REFER TO DRAWING NO. WSD 2.18.
10. FOR DETAILS OF S.S. CAT-LADDER REFER TO DRAWING NO. WSD 7.3.
11. FOR DETAILS OF MANHOLE COVER AND FRAME REFER TO DRAWING NO. WSD 7.48 IN CASE OF CONCRETE FOOTWAY AND DRAWING NO. WSD 7.50 IN CASE OF FOOTWAY WITH PAVING BLOCKS.
12. THE FLANGES SHALL BE STANDARD FLANGE TYPE PN16 COMPLYING WITH THE RELEVANT REQUIREMENT IN BS EN 1092 UNLESS OTHERWISE SPECIFIED.
13. FOR DETAILS OF IDENTIFICATION TAPE FOR CABLE DUCT REFER TO DRAWING NO. WSD 7.41.
14. FOR DETAILS OF C.I. GRATING FOR PUMP SUMP REFER TO DRAWING NO. WSD 1.19.
15. DRAIN HOLE AND HESSIAN BAG SHALL BE INSTALLED WHEN THE ESTIMATED HIGHEST GROUND WATER LEVEL IS BELOW THE FORMATION LEVEL OF VALVE CHAMBER.
16. CABLE DUCTS SHALL BE SEALED UP IN ACCORDANCE WITH DRAWING NO. WSD 7.16.

Cod Ref. : WSD014205-A.dwg

<p style="font-size: 1.2em; margin: 0;">ELECTROMAGNETIC FLOWMETER CHAMBER FOR PIPE SIZE DN400 OR ABOVE – GENERAL ARRANGEMENT</p>	水務署 Water Supplies Department			
	APPROVED	M.C. LEUNG AD/NW	DRAWING NO.	CSWP
	DATE	3/3/06	WSD 1.42A (SHEET 5 OF 5)	
	SCALE	NOT APPLICABLE		