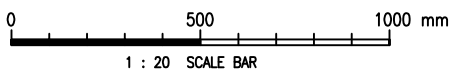


PLAN

Cad Ref. : WSD013301-F.dwg

F	EARTHING ROD REMOVED, REMOVABLE S.S. GRATINGS ADDED AND R.C. DETAILS REVISED	S.K. YEUNG	28/1/15
E	GENERAL REVISION	S.K. YEUNG	2/1/15
D	RE-FORMATTED TO CSWP	W.K. CHIU	5/9/03
C	CONFIGURATION OF DISTRICT METER AND EARTHING ROD ADDED	W.K. CHIU	10/10/00
B	NOTE 12 ADDED	K.W. CHAN	28/11/97
A	GENERAL REVISION	K.W. CHAN	23/1/97
REF.	REVISION	APPROVED	DATE

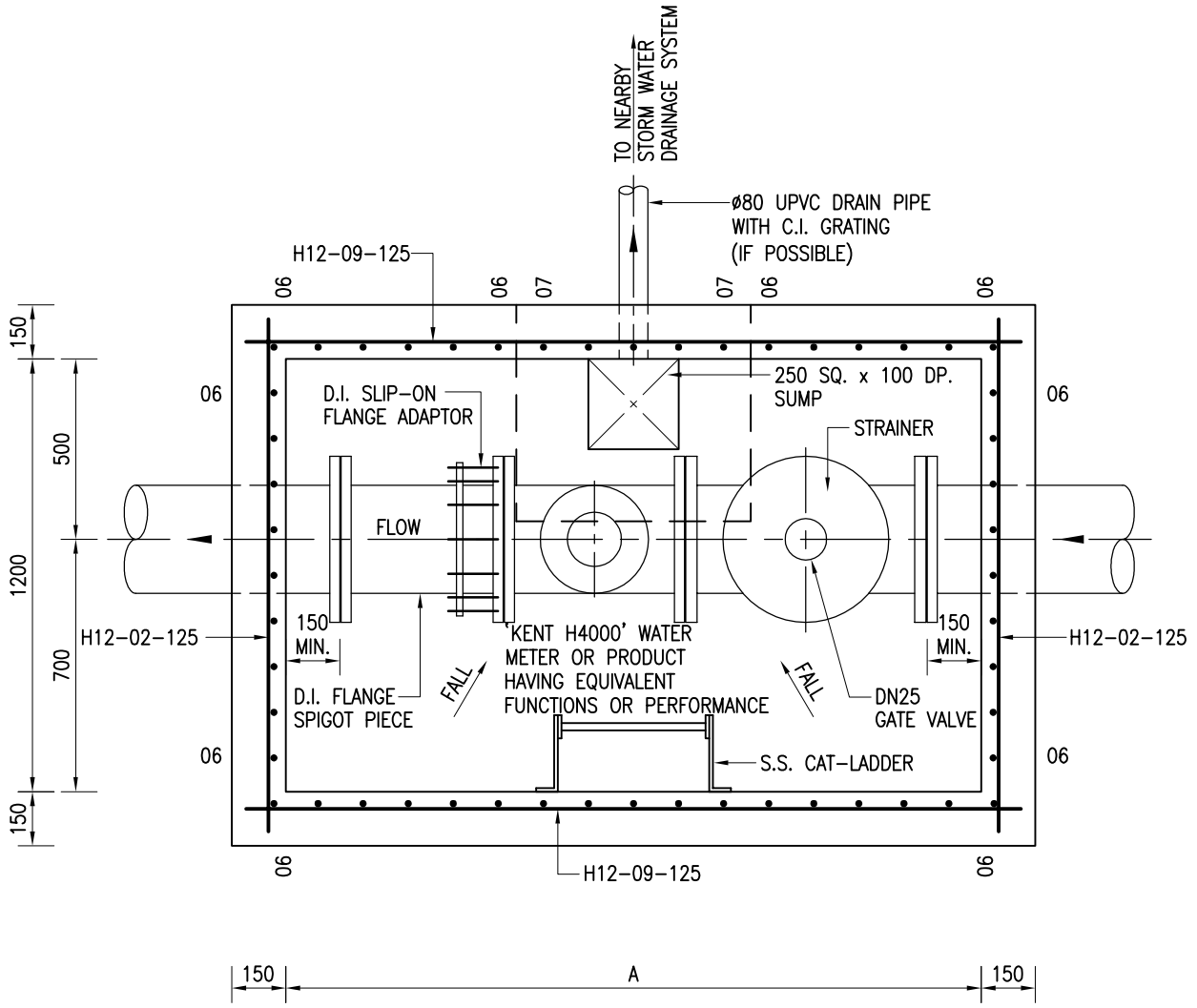


DISTRICT METERING METER CHAMBER

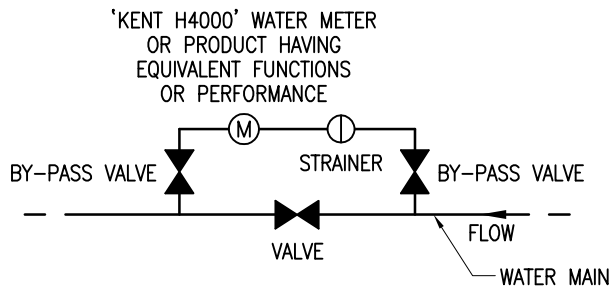


水務署
Water Supplies Department

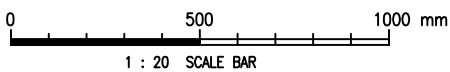
APPROVED	K.P. MOK AD/NW	DRAWING NO.	CSWP
DATE	15/11/94	WSD 1.33F (SHEET 1 OF 5)	
SCALE	1 : 20		



SECTIONAL PLAN



CONFIGURATION OF DISTRICT METERING METER



Cad Ref. : WSD013302-F.dwg

DISTRICT METERING METER CHAMBER



水務署
Water Supplies Department

APPROVED

K.P. MOK
AD/NW

DATE

15/11/94

SCALE

1 : 20

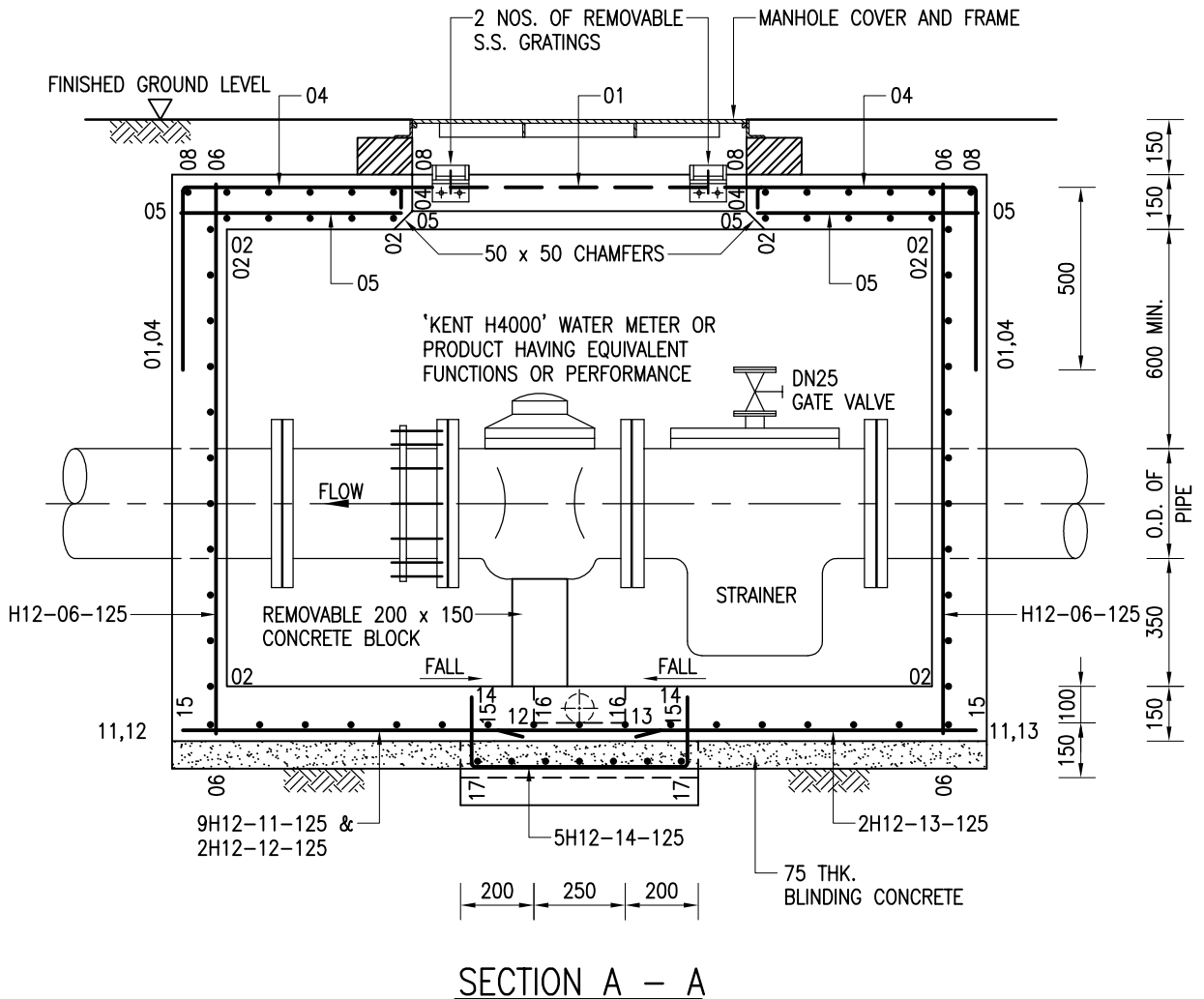
DRAWING NO.

WSD 1.33F

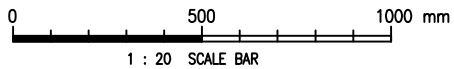
(SHEET 2 OF 5)

CSWP

Cad Ref. : WSD013303-F.dwg



SECTION A - A



DISTRICT METERING METER CHAMBER



水務署
Water Supplies Department

APPROVED

K.P. MOK
AD/NW

DATE

15/11/94

SCALE

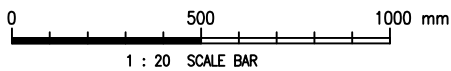
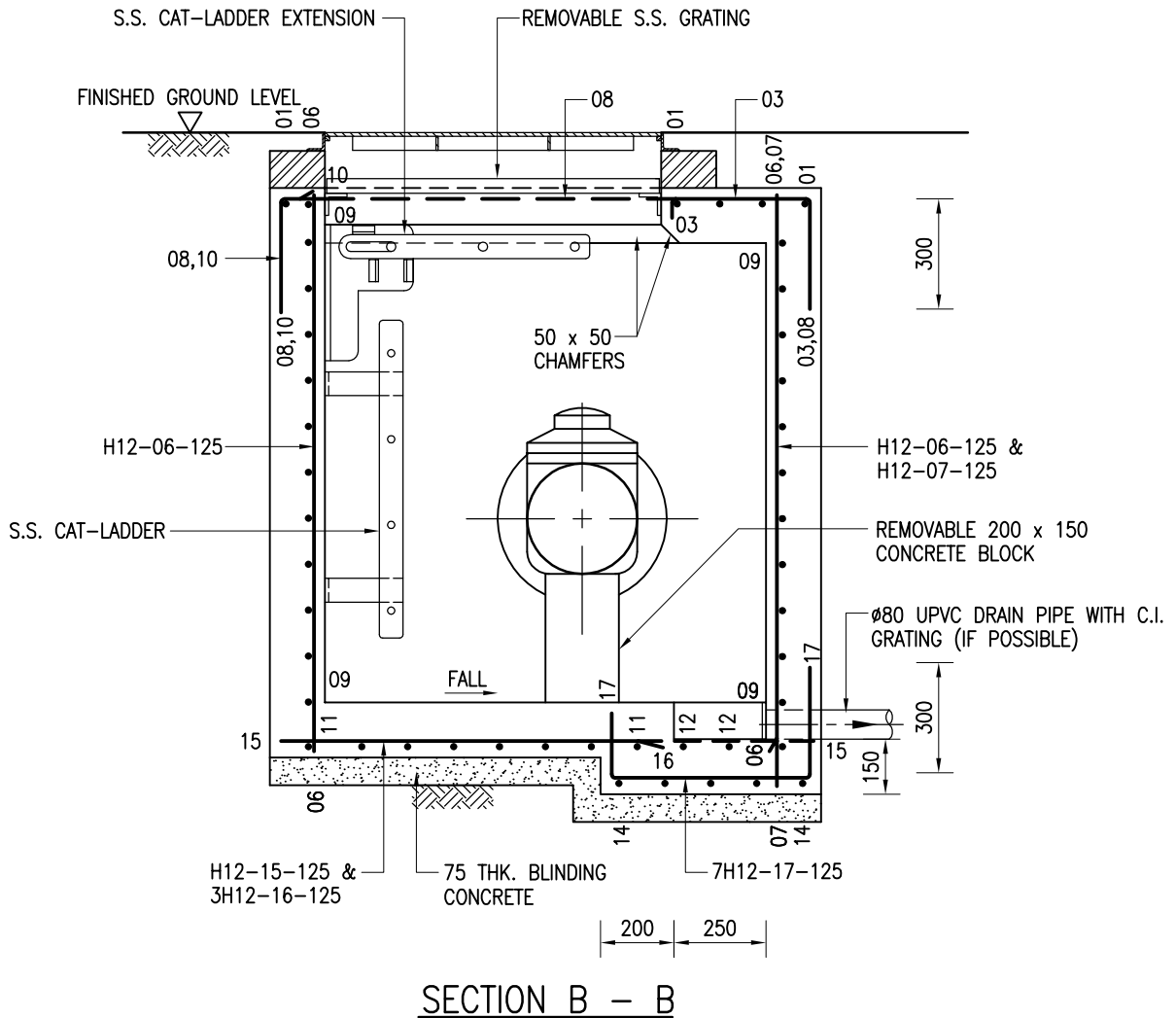
1 : 20

DRAWING NO.

WSD 1.33F
(SHEET 3 OF 5)

CSWP

Cad Ref. : WSD013304-F.dwg



DISTRICT METERING METER CHAMBER



水務署
Water Supplies Department

APPROVED

K.P. MOK
AD/NW

DATE

15/11/94

SCALE

1 : 20

DRAWING NO.

WSD 1.33F

(SHEET 4 OF 5)

CSWP

DIMENSIONS OF MECHANICAL FLOWMETER CHAMBER

NOMINAL DIA. OF PIPE (DN)	50	80	100	150	200	250	300
A (mm)	1100	1300	1400	1600	1600	1700	2000

NOTES :

1. ALL DIMENSIONS ARE IN MILLIMETRES UNLESS OTHERWISE SPECIFIED.
2. THE METER CHAMBER MUST BE SITED ON FOOTWAY OR PAVEMENT WITHOUT VEHICULAR TRAFFIC.
3. THE CENTRE-LINE OF THE PIPEWORK MUST BE HORIZONTAL.
4. CONCRETE TO CHAMBER SHALL BE GRADE 35/20D. BLINDING CONCRETE SHALL BE GRADE 20/20D.
5. NOMINAL COVER TO REINFORCEMENT SHALL BE 40mm UNLESS OTHERWISE SPECIFIED.
6. THE STRAINER IS OF THE MODEL 'CNB' CN3125U C.I. BASKET TYPE OR PRODUCT HAVING EQUIVALENT FUNCTIONS OR PERFORMANCE.
7. ALL NEWLY LAID WATERMAINS MUST BE CLEANED AND STERILIZED BEFORE THE INSTALLATION OF KENT METER OR PRODUCT HAVING EQUIVALENT FUNCTIONS OR PERFORMANCE AND STRAINER INSIDE THE CHAMBER.
8. A MINIMUM OF 15d STRAIGHT PIPE UPSTREAM AND 10d STRAIGHT PIPE DOWNSTREAM FROM THE CHAMBER POSITION SHALL BE PROVIDED WHERE d IS THE PIPE OUTSIDE DIAMETER.
9. FOR DESCRIPTION OF REINFORCEMENT REFER TO DRAWING NO. WSD 7.1.
10. REINFORCEMENT SHALL BE CUT TO SUIT OPENINGS.
11. DRAIN PIPE FOR CHAMBER TO BE PROVIDED UNLESS FOUND TO BE IMPOSSIBLE ON SITE. DISCHARGE POINT OF THE DRAIN TO BE DETERMINED ON SITE BY THE ENGINEER.
12. THE DISTRICT METERING METER AND CHAMBER SHALL BE SITED ON A BY-PASS BRANCH OFF THE PRINCIPAL MAIN.
13. FOR DETAILS OF S.S. CAT-LADDER REFER TO DRAWING NO. WSD 7.3.
14. FOR DETAILS OF C.I. GRATING REFER TO DRAWING NO. WSD 1.41.
15. FOR TOP TREATMENT APPLIED TO THE MANHOLE COVER, REFER TO DRAWING NO. WSD 1.24.
16. FOR DETAILS OF MANHOLE COVER AND FRAME, REFER TO DRAWING NO. WSD 7.15 IN CASE OF CONCRETE FOOTWAY AND DRAWING NO. WSD 7.51 IN CASE OF FOOTWAY WITH PAVING BLOCKS.
17. FOR DETAILS OF REMOVABLE S.S. GRATING, REFER TO DRAWING NO. WSD 1.32.
18. THE REMOVABLE S.S. GRATING, INCLUDING THE BOLTS AND NUTS, SHALL BE OF STEEL DESIGNATION 1.4404 TO BS EN 10088-1.
19. ALL WELDS SHALL BE 3mm FILLET WELD.
20. SHARP EDGES OF ALL STEEL FLATS SHALL BE REMOVED.

Cad Ref. : WSD013305-F.dwg

DISTRICT METERING METER CHAMBER



水務署
Water Supplies Department

APPROVED

K.P. MOK
AD/NW

DRAWING NO.

CSWP

DATE

15/11/94

WSD 1.33F
(SHEET 5 OF 5)

SCALE

NOT APPLICABLE