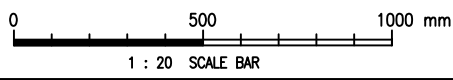


SECTIONAL PLAN

Cad Ref. : WSD012601-D.dwg



D	GENERAL REVISION	S.K. YEUNG	2/1/15
C	RE-FORMATTED TO CSWP	W.K. CHIU	5/9/03
B	GENERAL REVISION	W.K. CHIU	10/10/00
A	GENERAL REVISION	K.W. CHAN	30/7/97
REF.	REVISION	APPROVED	DATE

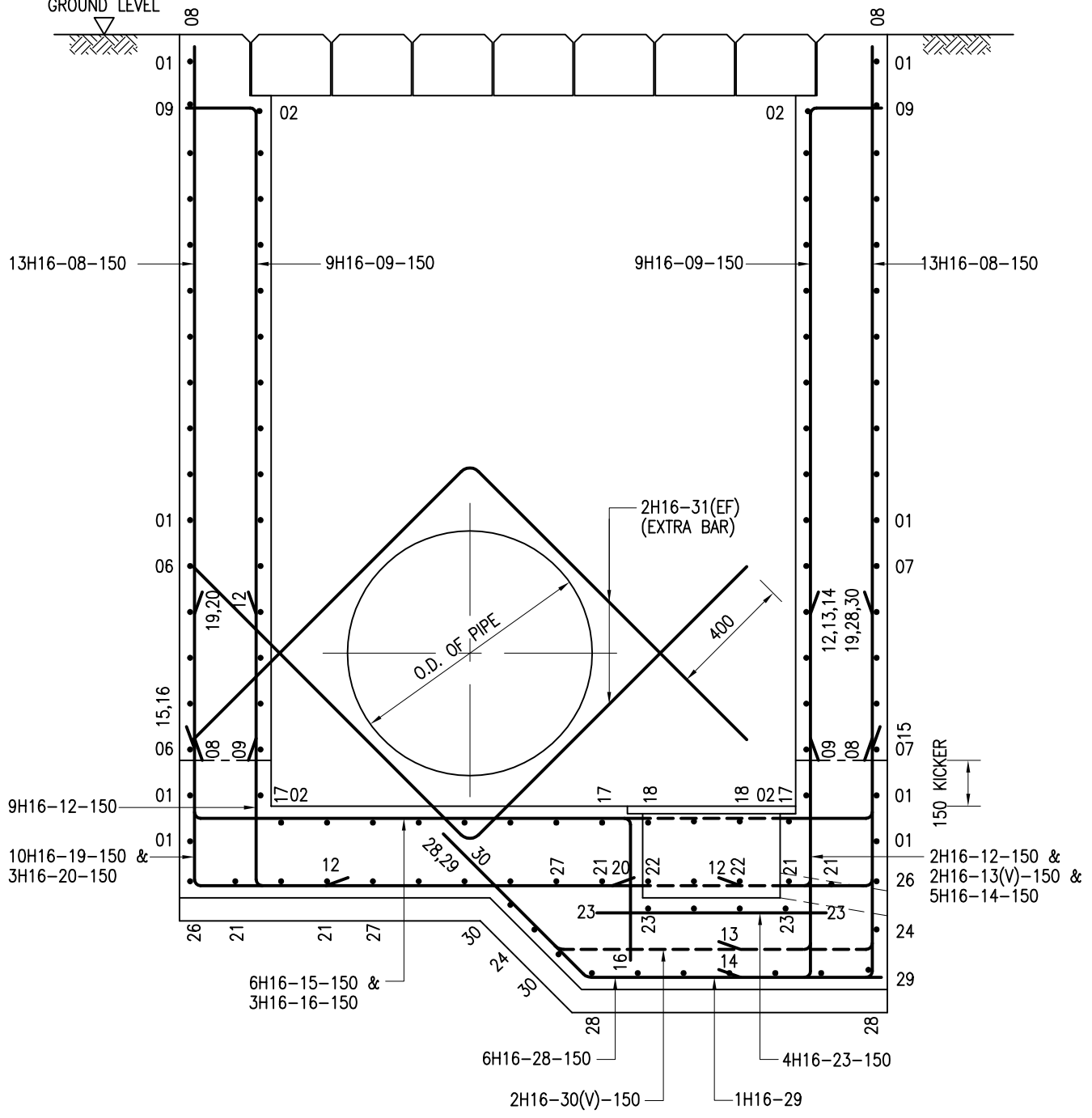
PORTABLE FLOWMETER CHAMBER
FOR PIPE DN800 AND ABOVE -
R.C. DETAILS



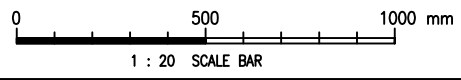
水務署
Water Supplies Department

APPROVED	K.P. MOK AD/NW	DRAWING NO.	CSWP
DATE	17/3/94	WSD 1.26D	(SHEET 1 OF 3)
SCALE	1 : 20		

GROUND LEVEL



SECTION A - A



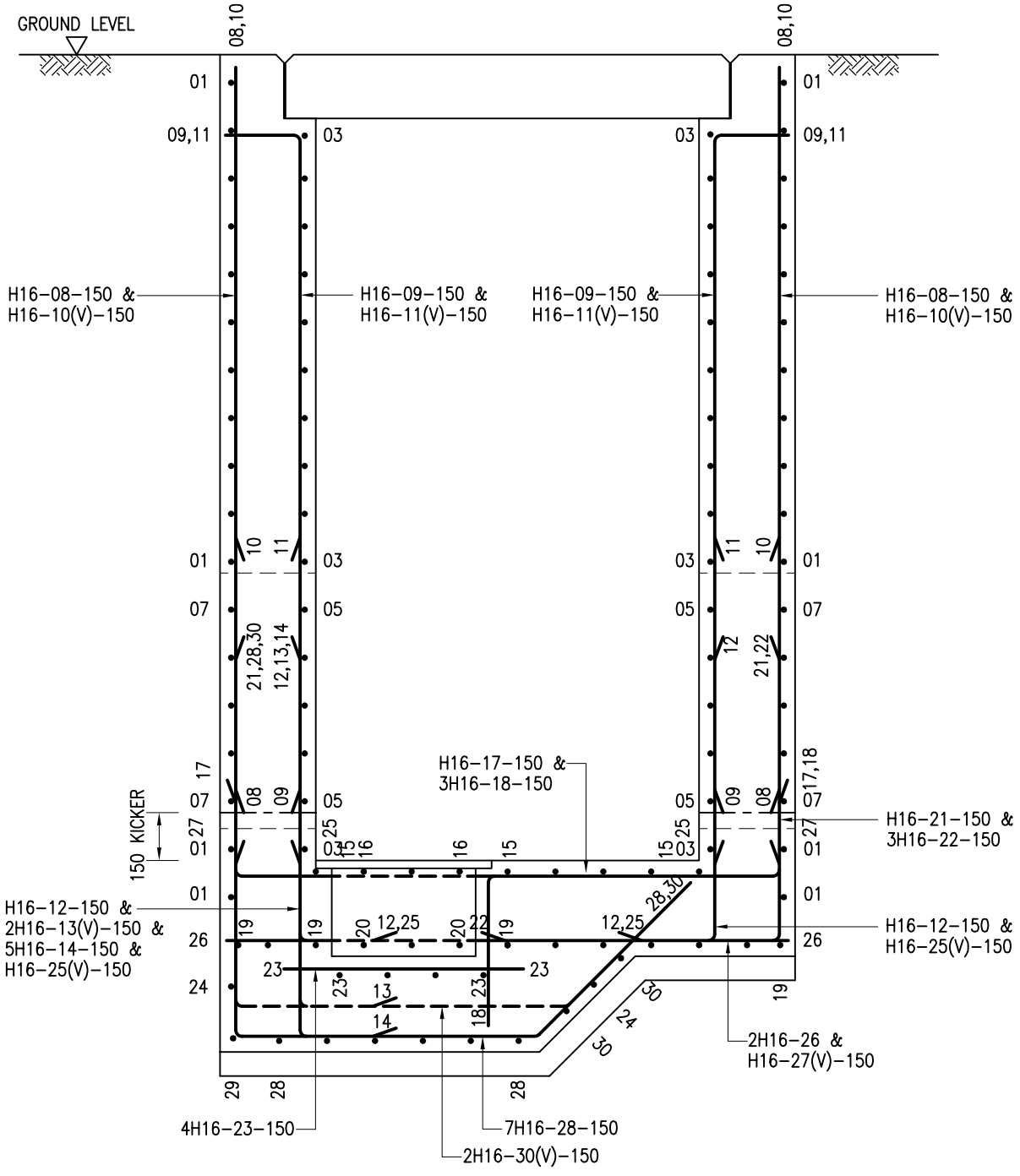
Cad Ref. : WSD012602-D.dwg

PORTABLE FLOWMETER CHAMBER
FOR PIPE DN800 AND ABOVE -
R.C. DETAILS



水務署
Water Supplies Department

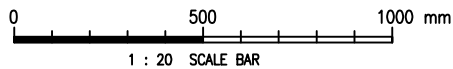
APPROVED	K.P. MOK AD/NW	DRAWING NO.	CSWP WSD 1.26D (SHEET 2 OF 3)
DATE	17/3/94		
SCALE	1 : 20		



NOTES :

SECTION B - B

1. ALL DIMENSIONS ARE IN MILLIMETRES.
2. NOMINAL COVER TO REINFORCEMENT SHALL BE 40mm FOR CHAMBER AND 25mm FOR PRECAST CONCRETE COVER UNLESS OTHERWISE SPECIFIED.
3. ALL REINFORCED CONCRETE SHALL BE GRADE 35/20D. BLINDING CONCRETE SHALL BE GRADE 20/20D.
4. MINIMUM LAP LENGTH FOR RIBBED STEEL REINFORCING BARS SHALL BE 43 TIMES THE DIAMETER OF THE SMALLER LAPPED BAR UNLESS OTHERWISE SPECIFIED.
5. FOR DESCRIPTION OF REINFORCEMENT REFER TO DRG. NO. WSD 7.1



Cad Ref. : WSD012603-D.dwg

PORTABLE FLOWMETER CHAMBER
FOR PIPE DN800 AND ABOVE -
R.C. DETAILS



水務署
Water Supplies Department

APPROVED	K.P. MOK AD/NW	DRAWING NO. WSD 1.26D (SHEET 3 OF 3)	CSWP
DATE	17/3/94		
SCALE	1 : 20		