

MINIMUM CLEARANCE FROM KERB LINE (IN mm)

CARRIAGEWAY DESIGN SPEED (IN km/h)	WHERE CARRIAGEWAY CROSS FALL IS	
	AWAY FROM HYDRANT OR TOWARDS HYDRANT BUT NOT STEEPER THAN 2.5%	TOWARDS HYDRANT AND STEEPER THAN 2.5%
≤50	500	600
>50 AND <80	600	600
≥80	1000	1000

NOTE :
 FOR ROADS (SUCH AS DISTRICT AND LOCAL DISTRIBUTOR ROADS, RURAL ROADS B AND FEEDER ROADS) WITH FOOTWAY ONLY AND WITHOUT VERGE, HYDRANTS CAN BE ERECTED CLOSER TO THE EDGE OF THE CARRIAGEWAY BUT NOT LESS THAN 200 mm FOR ANY PART OF THE INSTALLATIONS. FOR ROADS WITH A SPEED LIMIT OF 70 km/h OR ABOVE, STRICT COMPLIANCE WITH THE REQUIREMENTS OF THE ABOVE TABLE IS REQUIRED.

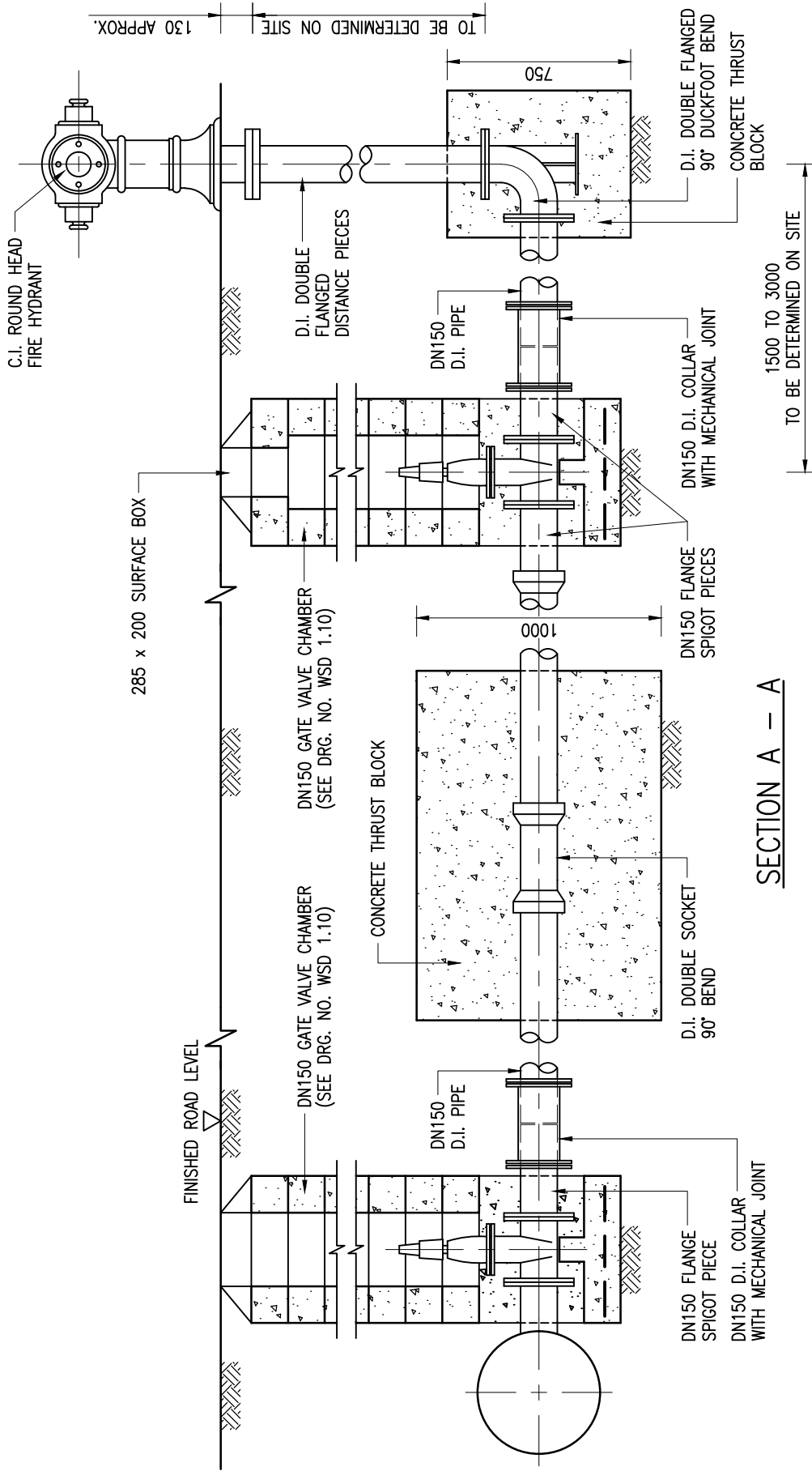
F	GENERAL REVISION	C.Y. CHAN	28/7/22
E	GENERAL REVISION	K.H. HO	18/8/21
D	RE-FORMATTED TO CSWP	W.K. CHIU	5/9/03
C	GENERAL REVISION	W.K. CHIU	20/9/00
B	REFERENCE TO C.I. SURFACE BOX DELETED	W.K. CHIU	14/9/99
A	GENERAL REVISION	K.W. CHAN	23/11/93
REF.	REVISION	APPROVED	DATE

Cad Ref. : WSD011701-F.dwg

TYPICAL ARRANGEMENT OF DN150 FIRE HYDRANT

 水務署
Water Supplies Department

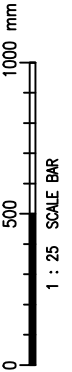
APPROVED	G.C. LEE AD/NW	DRAWING NO.	CSWP
DATE	9/6/92	WSD 1.17F (SHEET 1 OF 2)	
SCALE	1 : 25		



SECTION A - A

NOTES :

1. ALL DIMENSIONS ARE IN MILLIMETRES.
2. THE CAP OF THE CONTROL VALVE SPINDLE SHOULD BE AT 250 mm APPROX. BELOW THE VALVE COVER AND IN NO CASE SHOULD THE DISTANCE BE MORE THAN 500 mm.



TYPICAL ARRANGEMENT OF DN150 FIRE HYDRANT



水務署
Water Supplies Department

APPROVED

G.C. LEE
AD/NW

DATE

9/6/92

SCALE

1 : 25

DRAWING NO.

WSD 1.17F

(SHEET 2 OF 2)

CSWP