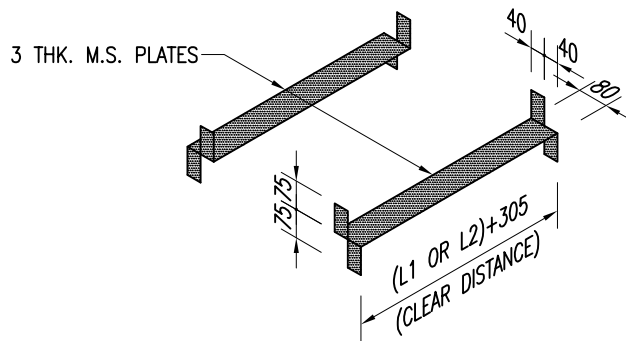


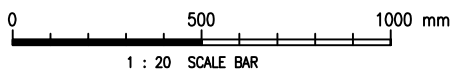
L1 = 200*, 300, 600 OR 800
 L2 = 285*, 300, 600 OR 1100

ISOMETRIC VIEW OF PRECAST CONCRETE UNITS

(* FOR TOP UNIT OF FIRE HYDRANT CONTROL VALVE CHAMBER ONLY, SEE DRG. NO. WSD 1.17)



ISOMETRIC VIEW OF MILD STEEL TIE



| | | | |
|------|----------------------|------------|---------|
| E | GENERAL REVISION | S.K. YEUNG | 2/1/15 |
| D | NOTE 2 UPDATED | W.K. CHIU | 18/7/08 |
| C | RE-FORMATTED TO CSWP | W.K. CHIU | 5/9/03 |
| B | GENERAL REVISION | W.K. CHIU | 20/9/00 |
| A | DESIGN REVISED | K.W. CHAN | 3/9/96 |
| REF. | REVISION | APPROVED | DATE |

Cad Ref. : WSD010701-E.dwg

PRECAST CONCRETE UNITS FOR
 VALVE CHAMBERS



水務署
 Water Supplies Department

APPROVED

G.C. LEE
 AD/NW

DRAWING NO.

CSWP

DATE

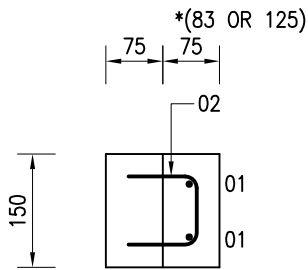
9/6/92

WSD 1.7E

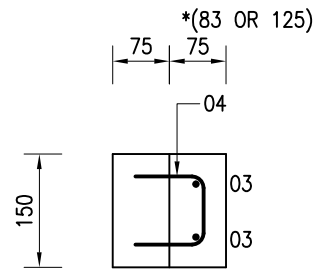
SCALE

1 : 20

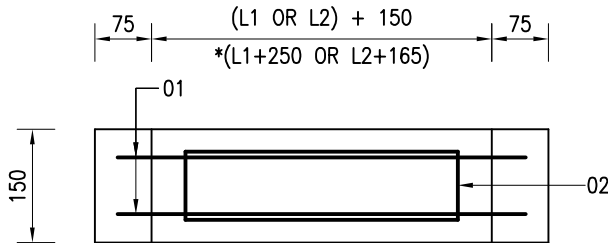
(SHEET 1 OF 2)



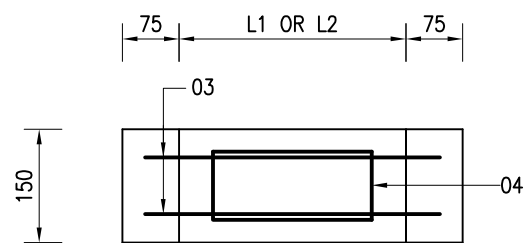
SIDE ELEVATION



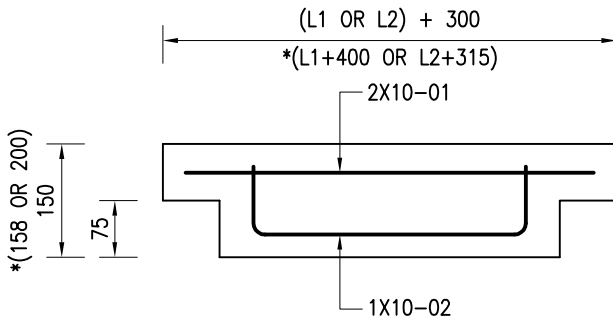
SIDE ELEVATION



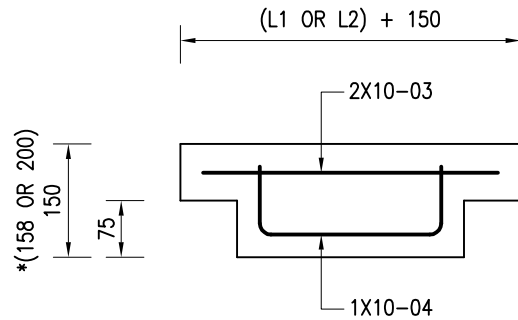
ELEVATION



ELEVATION



PLAN
TYPE I



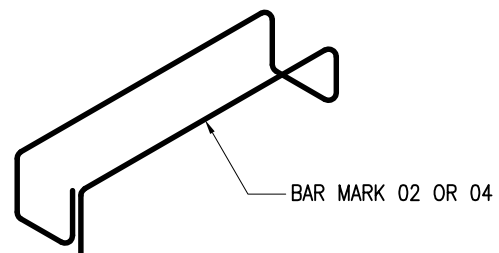
PLAN
TYPE II

DETAILS OF PRECAST CONCRETE UNITS

(* FOR TOP UNIT OF FIRE HYDRANT CONTROL VALVE CHAMBER ONLY, SEE DRG. NO. WSD 1.17)

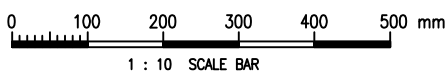
NOTES :

1. ALL DIMENSIONS ARE IN MILLIMETRES.
2. ALL STEEL MATERIALS SHALL BE HOT-DIP GALVANIZED TO BS EN ISO 1461:2009.
3. CONCRETE FOR PRECAST CONCRETE UNITS SHALL BE GRADE 30/20D.
4. FOR DESCRIPTION OF REINFORCEMENT, REFER TO DRAWING NO. WSD 7.1.



DETAILS OF BAR MARKS 02 AND 04

SCALE DIAGRAMMATIC



Cad Ref. : WSD010702-E.dwg

PRECAST CONCRETE UNITS FOR
VALVE CHAMBERS



水務署
Water Supplies Department

APPROVED

G.C. LEE
AD/NW

DATE

9/6/92

SCALE

1 : 10

DRAWING NO.

WSD 1.7E

(SHEET 2 OF 2)

CSWP