

# Introduction of the Automatic Meter Reading (AMR) System in Water Supplies Department (WSD)

[Version: 8/2017]

# Automatic Meter Reading (AMR) System

The Automatic Meter Reading (AMR) System provides the metering data, status outputs and alert signals where applicable for operation and monitoring of the smart metering system.

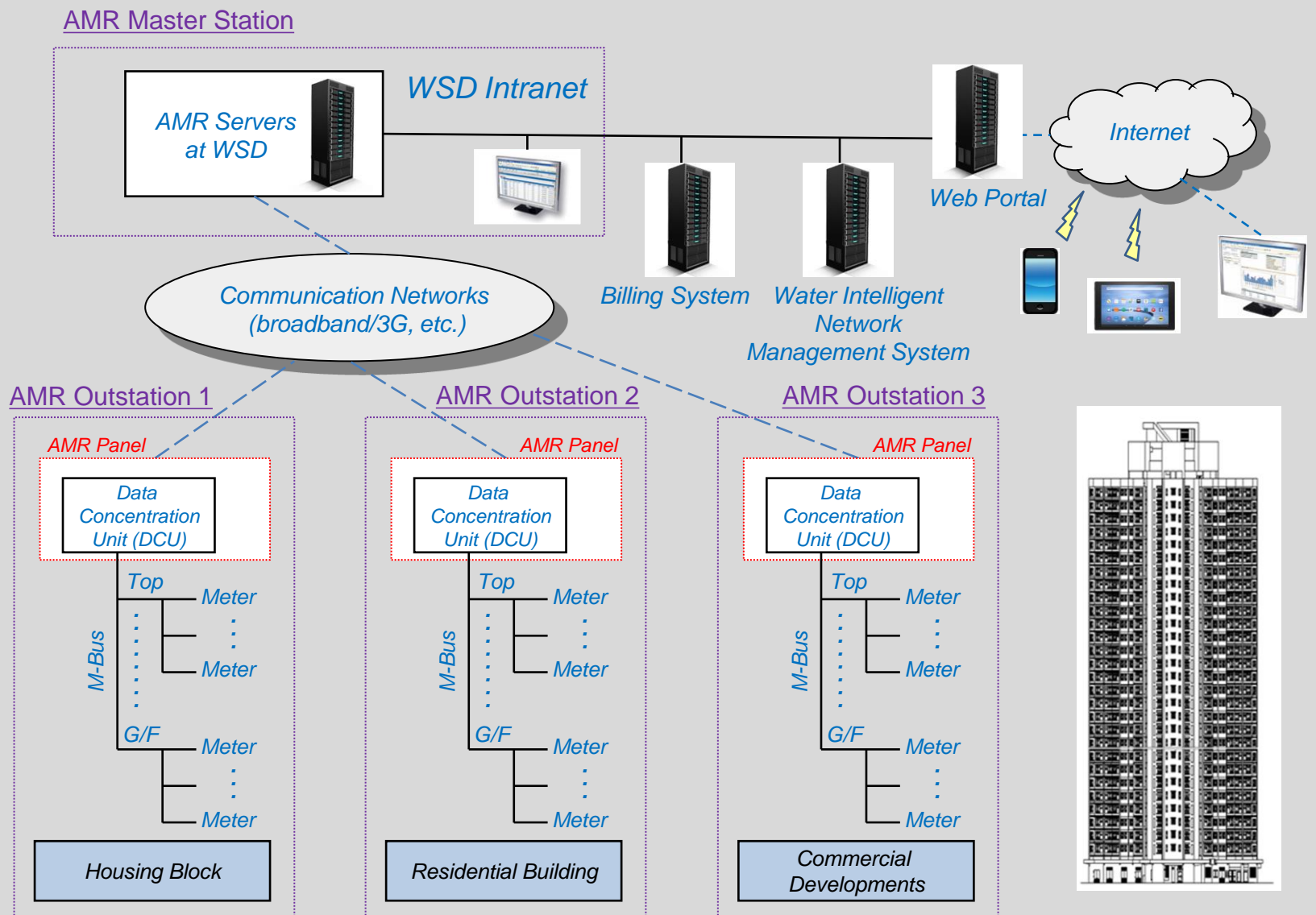
The smart water meter equipped with a meter interfacing unit (MIU) is capable of storing the meter reading and status in its internal memory for retrieval by the data concentration unit (DCU) at a preset interval via the M-Bus wires. The metering data collected by the DCU is transmitted to the master station in the WSD through broadband/3G network as deemed appropriate by the WSD for application of the smart metering system.

# Automatic Meter Reading (AMR) System

The infrastructure of the system consists of AMR Master Station and AMR Outstations.

- AMR Master Station – AMR application server, database server, time sync. server, communication equipment (router/modem), workstations, etc.
- AMR Outstation – Smart water meters equipped with meter interfacing units (MIU) of mechanical water meters and/or signal converter of electromagnetic (EM) water meters, Data Concentration Unit (DCU), Programmable Logic Controller (PLC), communication equipment (router/modem), backup battery panel, etc.

# Automatic Meter Reading (AMR) System



# Typical equipment at AMR Master Station

Local Workstation



- Monitor and control system & equipment
- Displays of alarms
- Reporting
- Information display

Application and Database Server



- Data log
- Alarm log
- Monitor and troubleshoot networks reliably
- Information distribution
- Time sync. Outstation DCU
- Interface to WSD intranet

Time Sync. Server



- Acquire GPS time
- Provide time sync. Function for central equipment

VPN Modem and 3G/4G Modem



- IP based communication
- Public wireless communication to Outstation DCU

# Typical equipment at AMR Outstation

Communication  
Equipment  
(router/modem)



- IP based communication
- Public wireless communication to central equipment

PLC



- IP based communication
- Send alarm status of outstation
- Provide communication self healing function

DCU



- IP based communication
- Open M-Bus communication
- Send MIU alarms
- Send MIU data log

MIU



- Open M-Bus communication
- Acquire pulse and flow from water meter
- Generate leakage, battery low alarm

Water Meter



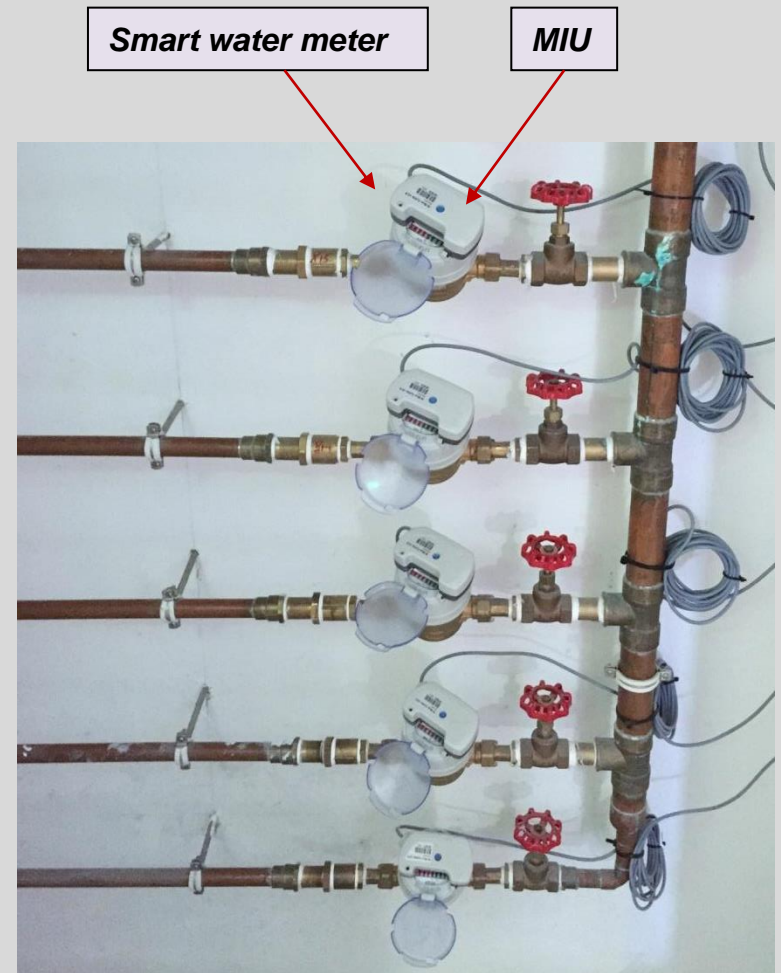
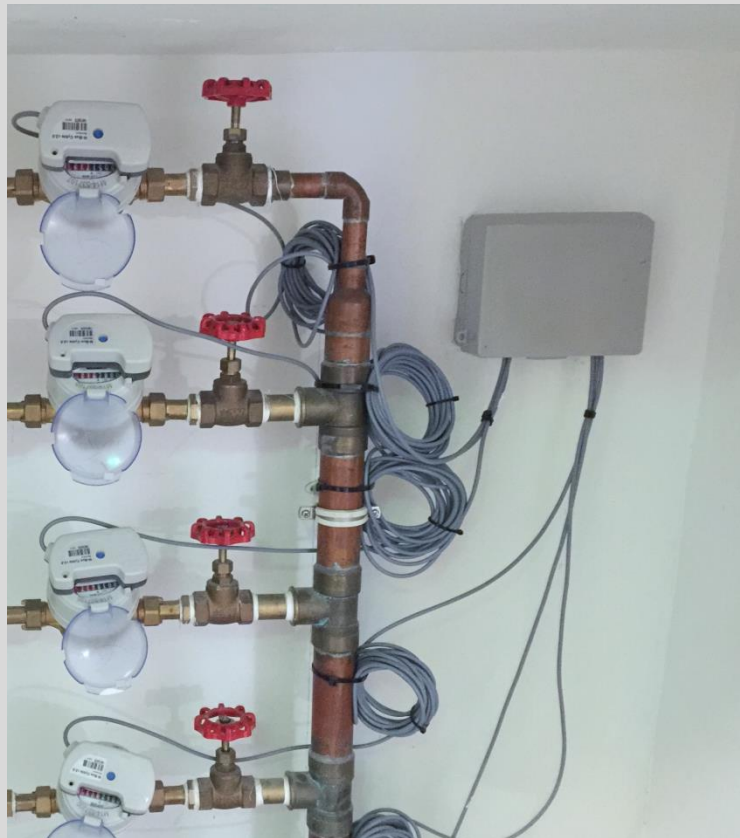
- Register tenant water counter

Backup  
Battery  
Panel



- Provide power backup function in case of main supply failure

# Typical arrangement of smart water meters





# ***Typical arrangement of Electromagnetic (EM) water meter for AMR application***



***EM water meter***



***EM water meter  
converter generating  
pulse output***

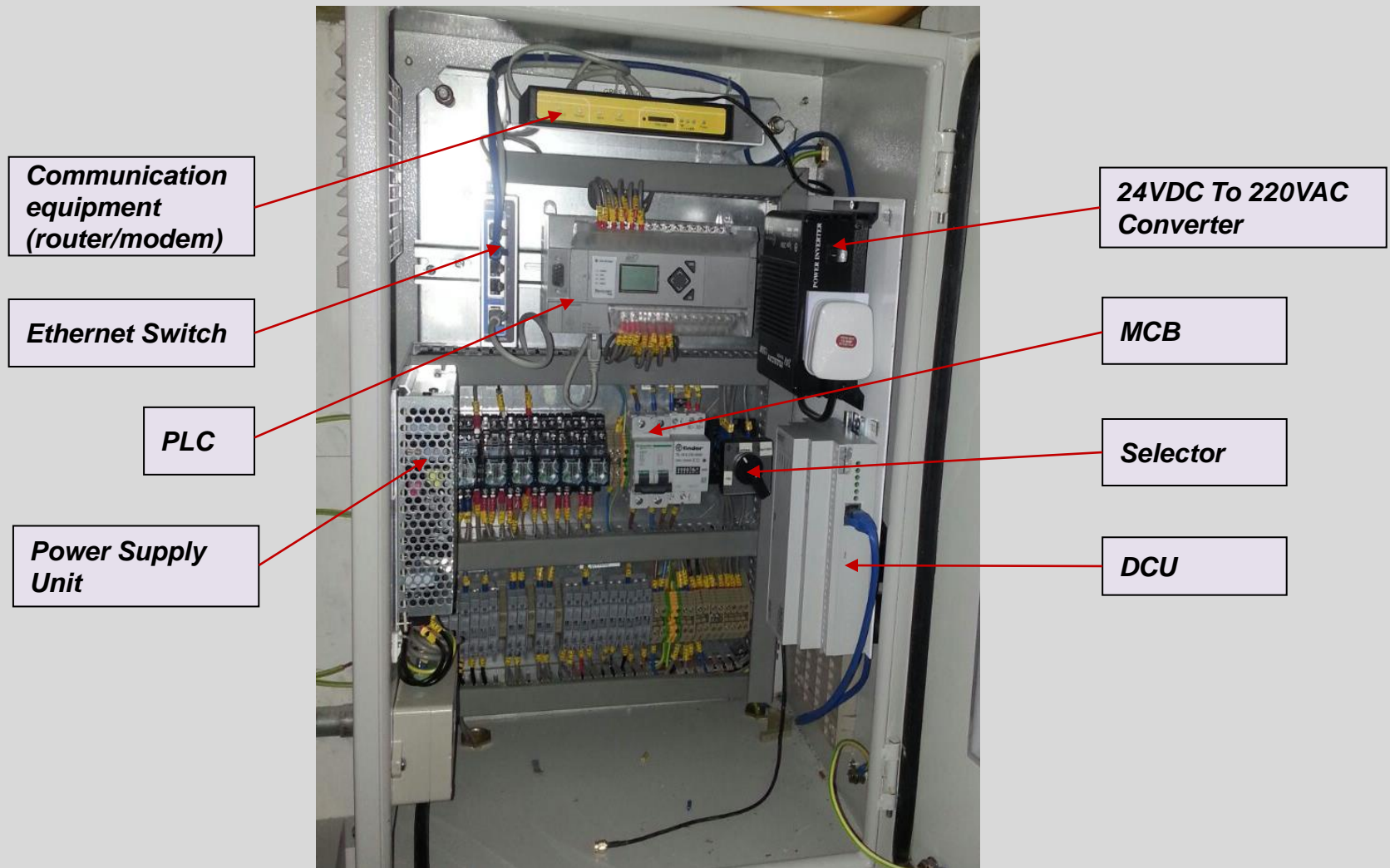
***Pulse to M-Bus  
Converter***



# Typical AMR Outstation Panel



# Typical Overview of AMR Panel



# Automatic Meter Reading (AMR) System

## Benefits

- Improve meter reading efficiency (i.e. automatic reading of water meters and reduce human error)
- Detection of abnormal water consumption (e.g. leakage of customers' piping)
- Better planning and management of water supplies
- Enhancing customer services through provision of timely water consumption information via Internet and mobile phone
- Ideal platform for promotion of water conservation