



## 廚房 KITCHEN



請貼在廚房水龍頭附近  
Please display near water tap



### 切勿長開水龍頭 浸洗慳水油污走

Wash vegetables and dishes in a **basin of water** instead of under a running tap

水務署  
Water Supplies Department

滴惜仔 Water Save Dave |  

有片睇  
Watch Video



### 切勿長開水龍頭 浸洗慳水油污走

Wash vegetables and dishes in a **basin of water** instead of under a running tap

水務署  
Water Supplies Department

滴惜仔 Water Save Dave |  

有片睇  
Watch Video



請貼在雪櫃當眼位置  
Please display on refrigerator



### 自然解凍 咪俾水!!

Defrost naturally instead of under a running tap

Let It Go~

水務署  
Water Supplies Department

滴惜仔 Water Save Dave |  

有片睇  
Watch Video

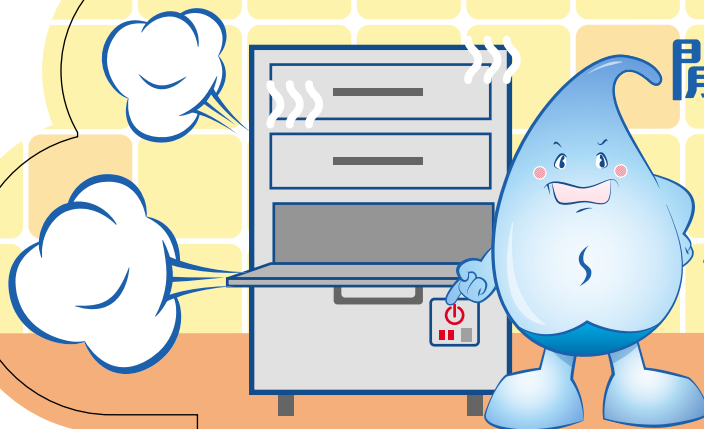




## 廚房 KITCHEN



請貼在蒸櫃當眼位置  
Please display on steam cabinet



閒置或待用記得

# 熄蒸櫃

Turn off steam cabinet if not in use

水務署  
Water Supplies Department

f 滴惜仔 Water Save Dave | Q



## 用餐區 DINING AREA



請貼在提供飲用水的位置  
對象：員工  
Please display at  
area serving drinks  
Target : Staff



# 顧客要求才 提供飲用水

Serve water only upon customers' request

f 滴惜仔 Water Save Dave | Q

水務署  
Water Supplies Department



## 清潔工具及用品存放位置 STORAGE OF CLEANING TOOLS



請貼在清潔工具及  
用品存放位置  
Please display at storage  
of cleaning tools



# 善用清潔粉劑 地氈乾淨又環保

避免使用蒸氣或  
熱水以減少浪費用水

Use powder cleaning agent instead  
of water or steam to clean carpet

f 滴惜仔 Water Save Dave | Q



水務署  
Water Supplies Department




## 洗手間 WASHROOM

**咪住!!**  
**沖大定沖細**  
**你有得揀**

Think before you press  
the dual flush button



 水務署  
Water Supplies Department

 滴惜仔 Water Save Dave | Q



請貼在雙掣式沖廁按鈕附近  
Please display near dual flush button



請貼在餐桌或餐廳當眼位置  
**對象：顧客**  
Please display on dining table  
or any eye-catching area  
**Target : Customers**

## 用餐區 DINING AREA



本餐廳

# 不主動提供飲用水

如有需要請揚聲

We serve water only upon **customers' request**

 水務署  
Water Supplies Department

 滴惜仔 Water Save Dave | Q




本餐廳

# 不主動提供飲用水

如有需要請揚聲

We serve water only upon **customers' request**

 水務署  
Water Supplies Department

 滴惜仔 Water Save Dave | Q





## 洗手間 WASHROOM

**咪住!!**  
**沖大定沖細**  
**你有得揀**

Think before you press  
the dual flush button



 水務署  
Water Supplies Department

 滴惜仔 Water Save Dave | Q



請貼在雙掣式沖廁按鈕附近  
Please display near dual flush button

## 用餐區 DINING AREA



本餐廳

# 不主動提供飲用水

如有需要請揚聲

We serve water only upon **customers'** request

 水務署  
Water Supplies Department

 滴惜仔 Water Save Dave | Q



請貼在餐桌或餐廳當眼位置

對象：顧客

Please display on dining table  
or any eye-catching area

Target : Customers




本餐廳

# 不主動提供飲用水

如有需要請揚聲

We serve water only upon **customers'** request

 水務署  
Water Supplies Department

 滴惜仔 Water Save Dave | Q







### 洗手間 WASHROOM

**咪住!!**  
**沖大定沖細**  
**你有得揀**

Think before you press  
the dual flush button



 水務署  
Water Supplies Department

 滴惜仔 Water Save Dave | Q



請貼在雙掣式沖廁按鈕附近  
Please display near dual flush button



請貼在餐桌或餐廳當眼位置  
對象：顧客  
Please display on dining table  
or any eye-catching area  
Target : Customers

### 用餐區 DINING AREA



本餐廳

## 不主動提供飲用水

如有需要請揚聲

We serve water only upon customers' request

 水務署  
Water Supplies Department

 滴惜仔 Water Save Dave | Q




本餐廳

## 不主動提供飲用水

如有需要請揚聲

We serve water only upon customers' request

 水務署  
Water Supplies Department

 滴惜仔 Water Save Dave | Q





洗手間 WASHROOM

**咪住!!**  
**沖大定沖細**  
**你有得揀**

Think before you press  
the dual flush button



 水務署  
Water Supplies Department

 滴惜仔 Water Save Dave | Q



請貼在雙掣式沖廁按鈕附近  
Please display near dual flush button



請貼在餐桌或餐廳當眼位置  
對象：顧客

Please display on dining table  
or any eye-catching area  
Target : Customers



用餐區 DINING AREA



本餐廳

**不主動提供飲用水**

如有需要請揚聲

We serve water only upon customers' request

 水務署  
Water Supplies Department

 滴惜仔 Water Save Dave | Q




本餐廳

**不主動提供飲用水**

如有需要請揚聲

We serve water only upon customers' request

 水務署  
Water Supplies Department

 滴惜仔 Water Save Dave | Q

