



水務署

Water Supplies Department

Billing arrangement during suspension of routine meter reading

The routine meter reading had been suspended in light of COVID-19 during period from January to August 2020. Following billing arrangement for affected accounts was made at that time -

Periods of suspension of routine meter reading	Billing arrangement
1 st round 29 January to 1 March, 2020	Bills issued by estimating water consumption
2 nd round 23 March to 3 May, 2020	
3 rd round 20 July to 30 August, 2020	Issuing of bills suspended , charges deferred to the next billing period

Prevailing tariff structure for water charges for domestic water supply for a 4-month period

1 st tier	12 cubic metres is free of charge
2 nd tier	next 31 cubic metres is charged at \$4.16 per cubic metre
3 rd tier	next 19 cubic metres is charged at \$6.45 per cubic metre
4 th tier	any consumption above the level of 62 cubic metres is charged at \$9.05 per cubic metre

where 4-month period is defined as 121.64 days

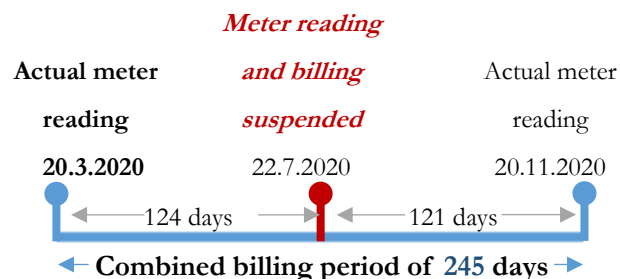
For more information, please visit our website



WSD Enquiry Hotline 2824 5000 Email wsdinfo@wsd.gov.hk

Billing arrangement - Illustration 1

Mr Chan usually receives water bills in March, July and November as follows-



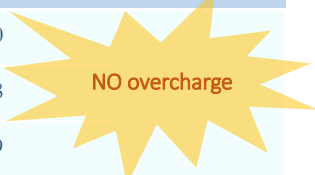
Water consumption of different tiers will be adjusted on a pro-rata basis according to the number of days in the period

When calculated as two separate bills

	20.3 - 22.7.2020	22.7 - 20.11.2020	Total
1 st tier	12 x 124/121.64 = 12.233	12 x 121/121.64 = 11.937	24.170
2 nd tier	31 x 124/121.64 = 31.601	31 x 121/121.64 = 30.837	62.438
3 rd tier	19 x 124/121.64 = 19.369	19 x 121/121.64 = 18.900	38.269

When billing periods are combined

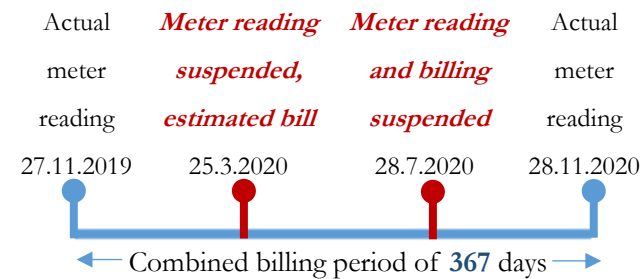
1 st tier	12 x 245/121.64 = 24.170
2 nd tier	31 x 245/121.64 = 62.438
3 rd tier	19 x 245/121.64 = 38.269



- Amount payable similar to sum of two regular water bills if no change in consumption habit
- May have consumed more water during COVID-19

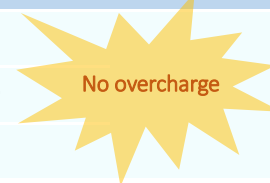
Billing arrangement - Illustration 2

Mr Wong usually receives water bills in March, July and November as follows-



1. Assessing water charges for the combined billing period

1 st tier	12 x 367/121.64 = 36.205
2 nd tier	31 x 367/121.64 = 93.530
3 rd tier	19 x 367/121.64 = 57.325



2. Cancel bill issued in March 2020 involving calculation of water charges based on estimated water consumption

3. Amount Payable

No double charging	Charges of the combined bill
Deduct	<u>Amount paid for cancelled bill</u>
=	<u>Amount payable for latest bill</u>

- Amount payable similar to sum of two regular water bills if no change in consumption habit
- May have consumed more water during COVID-19