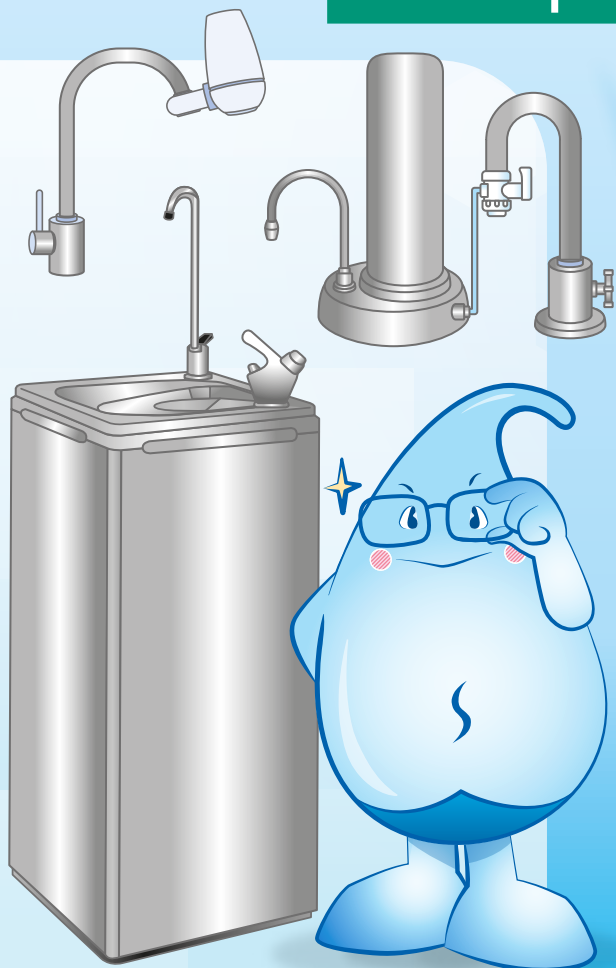


# Water Dispenser and Water Filter Use Tips



1

The drinking water supplied by the Water Supplies Department (WSD) fully complies with the Hong Kong Drinking Water Standards; and there is no need for further treatment such as water filters.

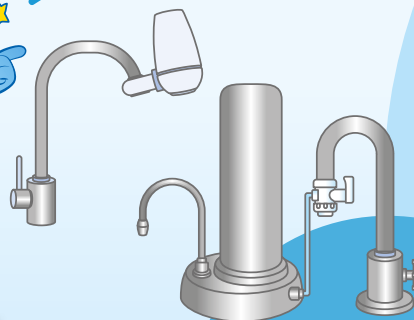
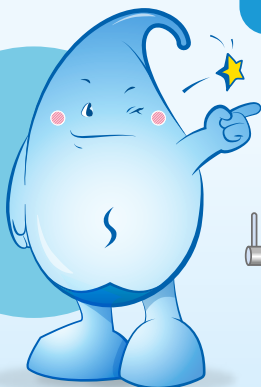
2

To avoid possible contamination of drinking water in the water supply system, Regulation 24 of the Waterworks Regulations stipulates that water-using apparatuses, such as water dispensers or water filters, shall not be installed or used without permission of WSD.

3

Customers should engage Licensed Plumbers to submit proposal for WSD's approval. However, submission of an application to WSD is not required for installation of a domestic faucet or countertop type of water filter without any stop valve to shut off the water flow.

WSD approval is not required for these types of water filters



4

Water dispensers or water filters, which are not well maintained, will cause water quality problems such as bacterial re-growth, etc. Users shall use and maintain the apparatuses properly in accordance with the manufacturer's instructions and the Centre for Health Protection's "Health Advice on Using Water Dispensers".

5

Not all water filters can reduce metal levels in the water. Water filters certified by the U.S. National Sanitation Foundation (NSF) Standards 53 and 58 are among those recognised to be capable of reducing some metals in the water.

6

For more information on water dispensers and water filters, please visit the website of WSD:  
<https://www.wsd.gov.hk/en/faqs/index.html#8>



2824 5000



[wsdinfo@wsd.gov.hk](mailto:wsdinfo@wsd.gov.hk)



[www.wsd.gov.hk](http://www.wsd.gov.hk)

