



水務署
Water Supplies Department

香港灣仔告士打道七號入境事務大樓
Immigration Tower, 7 Gloucester Road, Hong Kong.

電子郵遞
e-mail wsdinfo@wsd.gov.hk

電話
Telephone 2829 4367

圖文傳真
Facsimile 2824 0578

檔號
Reference (1) in WSD 3318/10/75 Pt. 4 TJ(8)

24 September 2010

Distribution : To all Licensed Plumbers and Authorised Persons

Dear Sir,

WSD Circular Letter No. 2/2010
Amendments to the Hong Kong Waterworks
Standard Requirements (HKWSR)

Your attention is drawn to the following amendments to the HKWSR which will be effective on all first submission of new plumbing proposals on or after 1.11.2010 :

(1) HKWSR Chapter 1 Clause 1.4 (a), Chapter 2 Clause 2.3 (a), Chapter 3 Clause 3.2 (a) and Chapter 7 Clause 7.7 (a) are amended to read :

“For meter rooms, the minimum distance between the outward face of the meter group and the wall/door opening directly opposite the meter group shall be 1000mm and there shall be no obstacles in between. Besides, if the door to the meter room is to be opened at an inward position and it is at the opposite side of the meter group, the minimum perpendicular distance between the outward face of the meter group and the door (the point on the door that is nearest to the meter group) when it is fully opened shall be 600mm;”

(2) HKWSR Chapter 1 Clause 1.4 (f), Chapter 2 Clause 2.3 (f), Chapter 3 Clause 3.2 (f) and Chapter 7 Clause 7.7 (f) are amended to read :

“The door(s) to the meter room/box shall not be equipped with any self-closing device. The lock of the door to the meter room shall be located at a level between 0.9m and 1.1m above the finished floor level. The door to the meter room shall be equipped with handle to facilitate door opening. The door handle shall be either in the form of long cylindrical or spherical shape to facilitate handling. Covered or flat sectioned handles shall not be used;”

Sketches nos. SK20447/1 and 20447/2 showing the above requirements are attached for reference.

Should you have any enquiries, please contact our Engineer Mr. Angus FAN at Tel. No. 2829 4726.

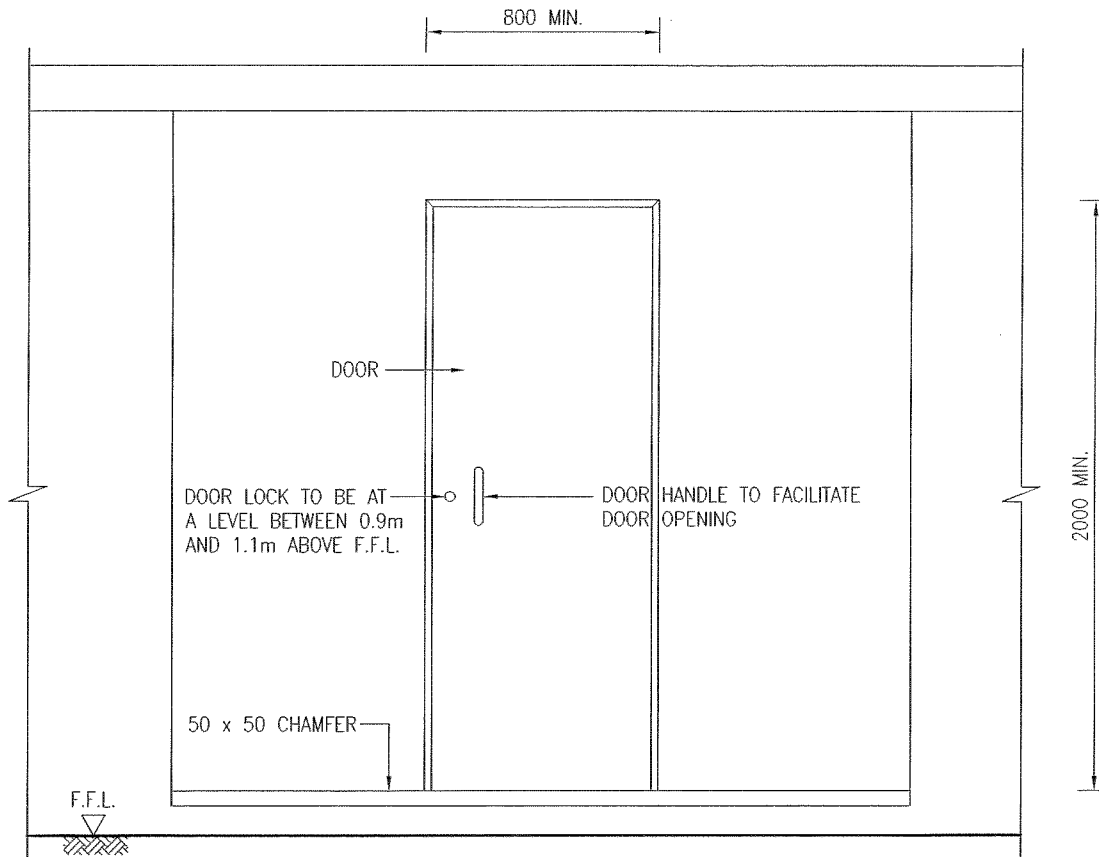
Yours faithfully,



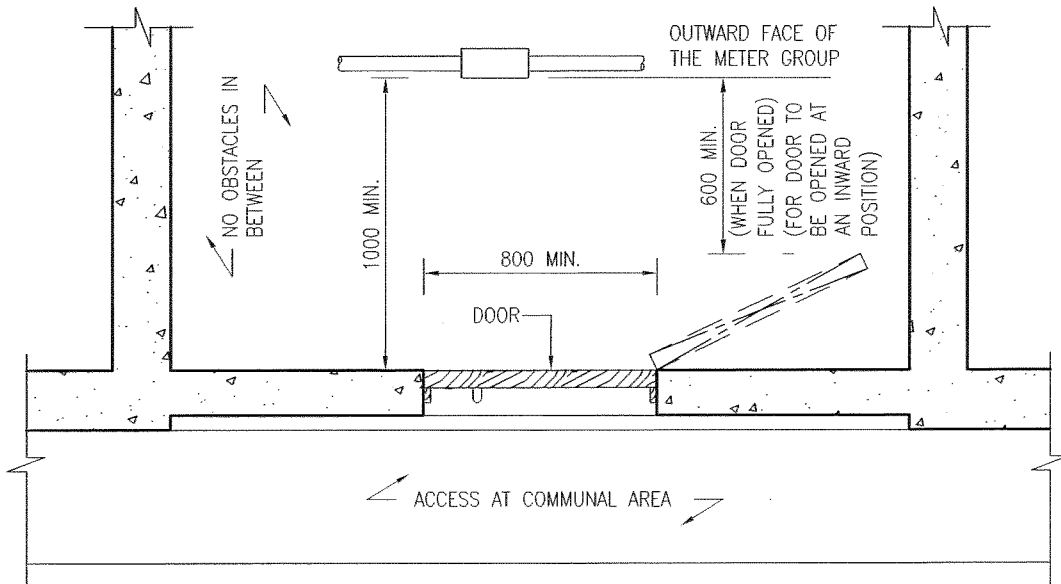
(Roger LAM)
for Water Authority

(with Chinese translation)

c.c. Housing Department
Buildings Department
Architectural Services Department
Fire Services Department
The Hong Kong Housing Society
The Hong Kong Institute of Architects
The Hong Kong Institution of Engineers
The Hong Kong Institute of Surveyors
Hong Kong Federation of Plumbing & Drainage Ltd.
The Institute of Plumbing and Heating Engineering – Hong Kong Council
Hong Kong Plumbing and Sanitary Ware Trade Association Ltd.
Hong Kong Licensed Plumbers Association Ltd.
Hong Kong Plumbing General Union
Hong Kong Water Works Professionals Association Ltd.
The Hong Kong Institution of Plumbing and Drainage Ltd.
The Association of Registered Fire Service Installation Contractors
of Hong Kong Limited
Real Estate Development Association of Hong Kong
WSD 3318/15/81 Pt.2



ELEVATION



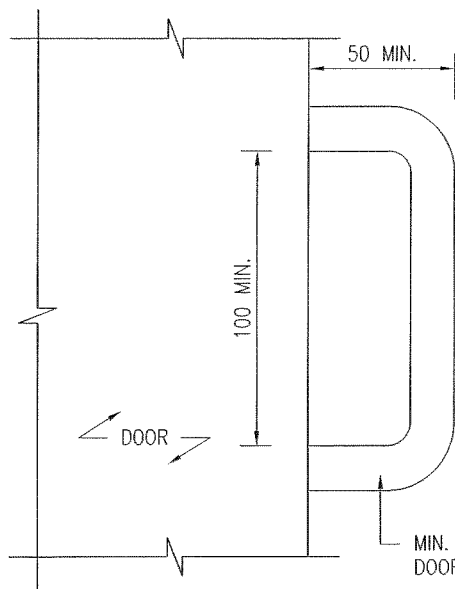
SECTIONAL PLAN

NOTE : DOOR TO THE METER ROOM SHOULD NOT BE EQUIPPED WITH ANY SELF-CLOSING DEVICE

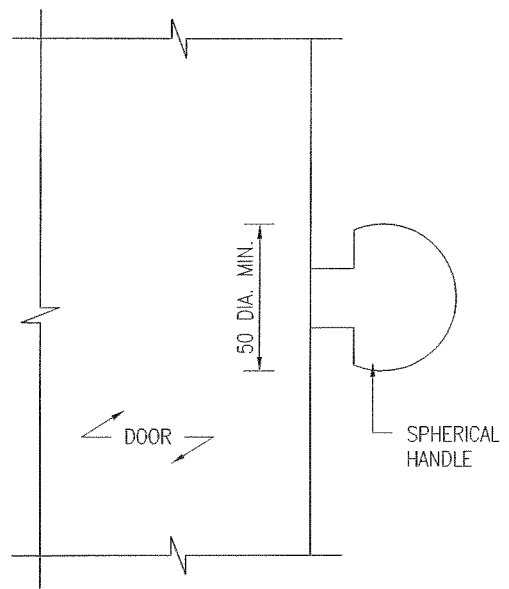
編號 no.	日期 date	摘要 description	簽署 initial
--------	---------	----------------	------------

修訂 REVISION

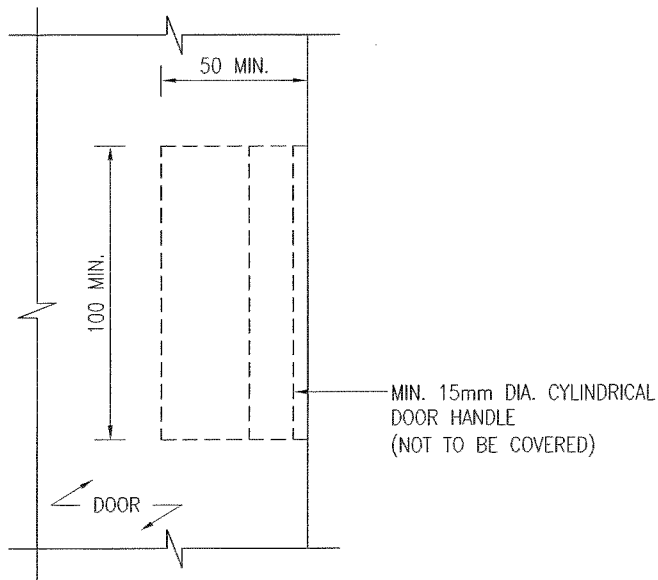
圖則名稱 drawing title	簽署 initial	日期 date	圖則編號 drawing no.	比例 scale
DOOR TO METER ROOM	繪製 drawn C. K. CHAN	22/09/10	SK20447/1	N.A.
	核對 checked C. M. FAN E/CS(TS)2	22/09/10		
	加簽 endorsed K. K. LAU SE/CS(TS)	22/09/10	 水務署 Water Supplies Department	
	核准 approved M. P. LAM CE/CS	22/09/10		



OPTION 1



OPTION 2



OPTION 3

圖則名稱 drawing title

TYPES OF DOOR HANDLE TO BE ADOPTED

簽署 initial

日期 date

圖則編號 drawing no.

比例 scale

繪製 drawn C. K. CHAN

22/09/10

SK20447/2

N.A.

核對 checked C. M. FAN E/CS(TS)2

22/09/10

加簽 endorsed K. K. LAU SE/CS(TS)

22/09/10

核准 approved M. P. LAM CE/CS

22/09/10

編號 no.	日期 date	摘要 description	簽署 initial
--------	---------	----------------	------------

修訂 REVISION			
-------------	--	--	--



水務署
Water Supplies Department