

Cad Ref. : WSD074802-D.dwg

600 SQUARE DUCTILE IRON  
MANHOLE COVER



水務署  
Water Supplies Department

APPROVED

M.C. LEUNG  
AD/NW

DATE

27/8/99

SCALE

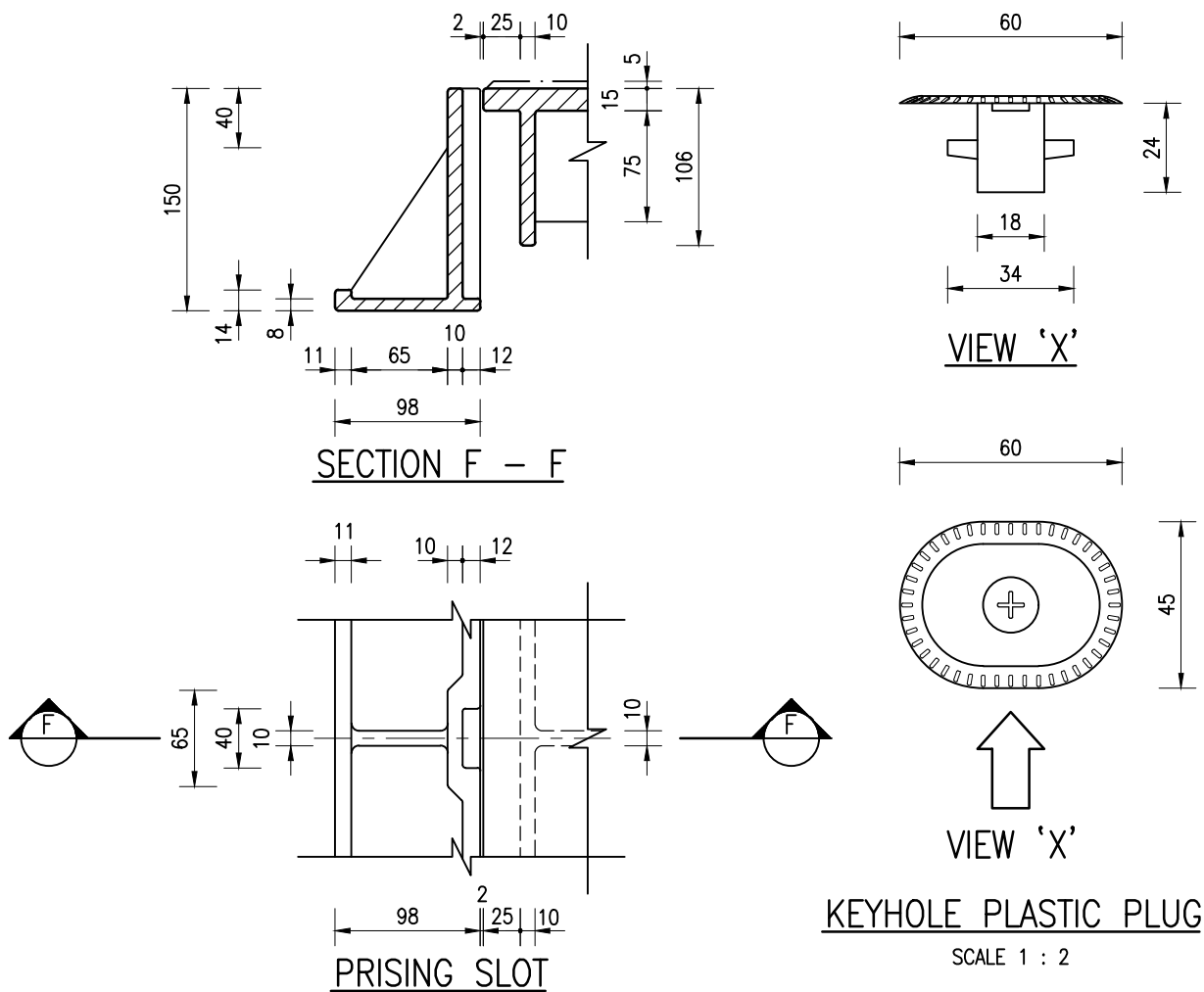
1 : 10

DRAWING NO.

WSD 7.48D

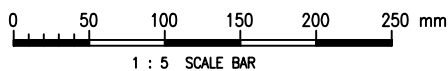
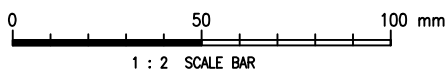
(SHEET 2 OF 3)

CSWP



NOTES :

1. ALL DIMENSIONS ARE IN MILLIMETRES.
2. THIS DRAWING SHALL BE READ IN CONJUNCTION WITH DRG. NO. WSD 7.43.
3. FOR DETAILS OF WATER SUPPLIES DEPARTMENT LOGO REFER TO DRG. NO. WSD 7.17 (SHEET 1 OF 3).
4. THE PLASTIC PLUG FOR KEYHOLE SHALL BE ABLE TO WITHSTAND A TEMPERATURE OF NOT LESS THAN 100°C AND HAVE AN IMPACT RESISTANT OF NOT LESS THAN 0.25kg/m, AND SHALL BE SUNLIGHT, ACID AND ALKALI RESISTANT.



Cad Ref. : WSD074803-D.dwg

600 SQUARE DUCTILE IRON  
MANHOLE COVER



水務署  
Water Supplies Department

APPROVED

M.C. LEUNG  
AD/NW

DATE

27/8/99

SCALE

1 : 5 OR AS SHOWN

DRAWING NO.

WSD 7.48D  
(SHEET 3 OF 3)

CSWP